

North Seneca Solar Project

Towns of Waterloo and Junius
Seneca County, New York

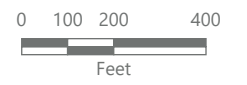
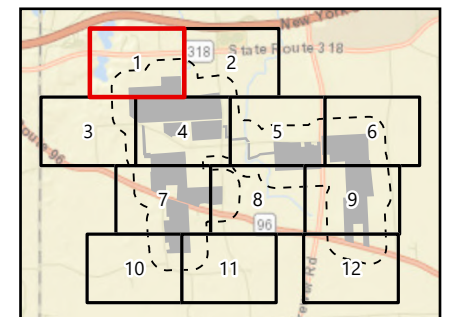
Article VIII
Application Supplement
Matter No. 23-00036

Land Use

- Agricultural
- Residential
- Commercial
- Recreation and entertainment
- Community Services
- Wild, forested, conservation lands and public parks

Facility Components

- PV Array Area
- Fence Line
- Facility Site



Prepared October 17, 2024
Basemap: USDA NAIP "2022 New York 60 cm" orthoimagery map service



North Seneca Solar Project

Towns of Waterloo and Junius
Seneca County, New York

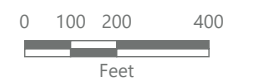
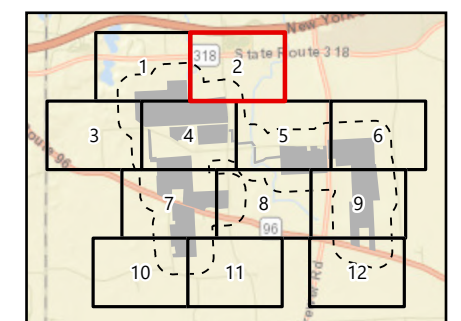
Article VIII
Application Supplement
Matter No. 23-00036

Land Use

- Agricultural
- Residential

Facility Components

- Access Road
- Facility Site



Prepared October 17, 2024
Basemap: USDA NAIP "2022 New York 60 cm"
orthoimagery map service

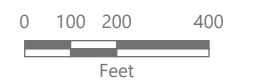
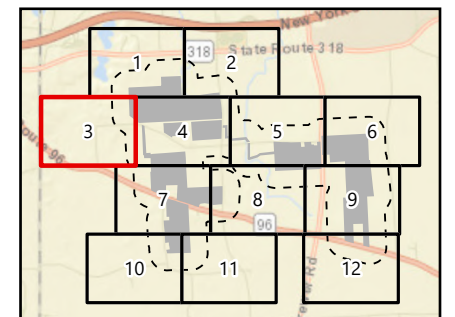


North Seneca Solar Project

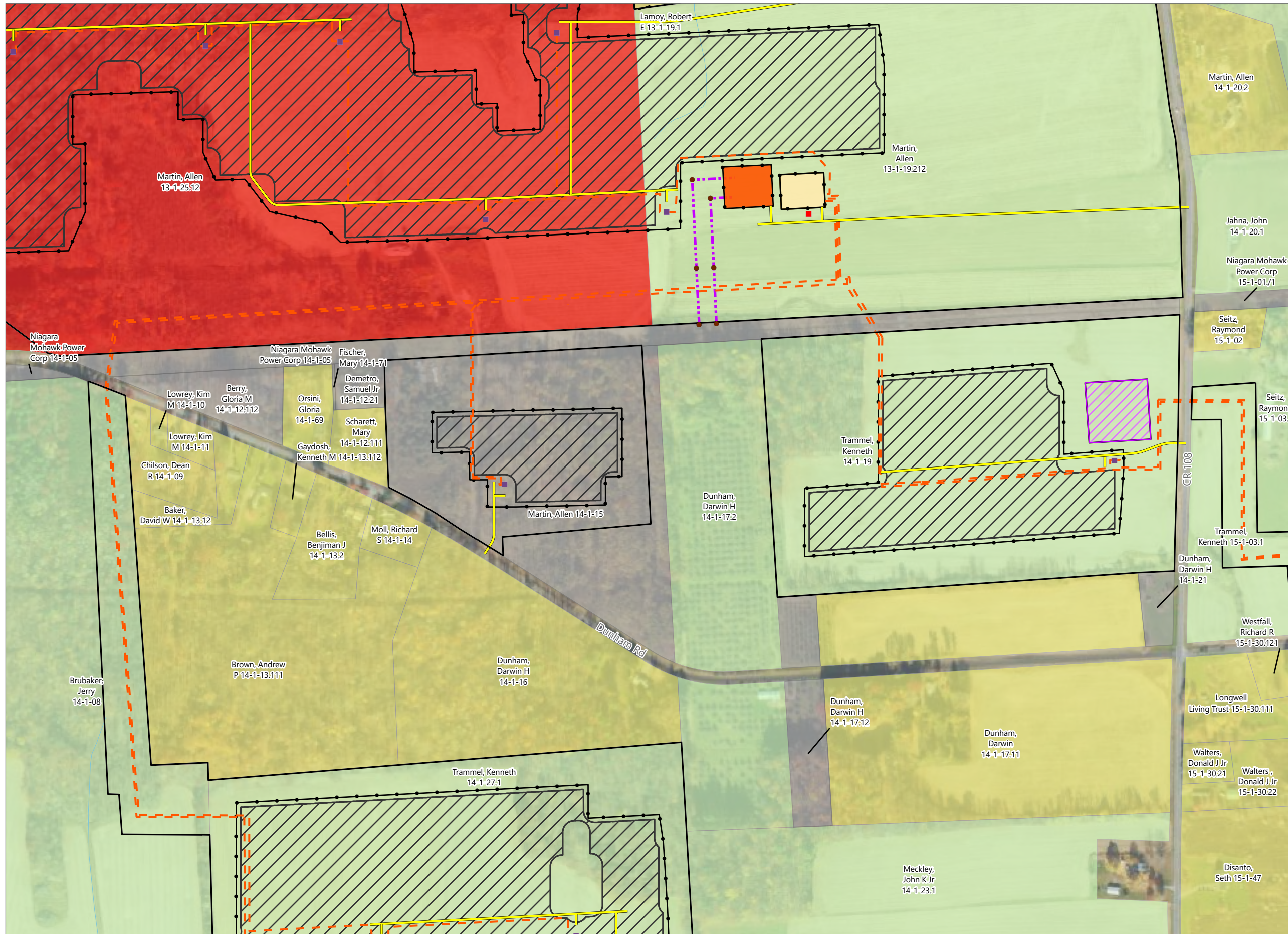
Towns of Waterloo and Junius
Seneca County, New York

Article VIII
Application Supplement
Matter No. 23-00036

- Land Use
- Agricultural
 - Residential
 - Vacant Land
 - Commercial
 - Community Services
- Facility Components
- Access Road
 - PV Array Area
 - Fence Line
 - Facility Site



Prepared October 17, 2024
Basemap: USDA NAIP "2022 New York 60 cm" orthoimagery map service



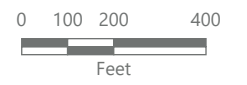
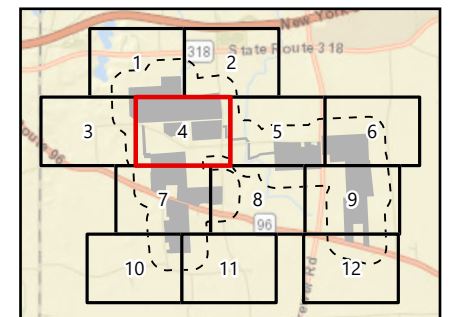
North Seneca Solar Project

Towns of Waterloo and Junius
Seneca County, New York

Article VIII
Application Supplement
Matter No. 23-00036

Land Use

- Agricultural
- Residential
- Vacant Land
- Commercial
- Utility Pole
- Storage Trailer
- Access Road
- Collection Line
- Transmission Tap Line
- PV Array Area
- Inverter
- Collection Substation
- POI Substation
- Fence Line
- Laydown Area
- Facility Site



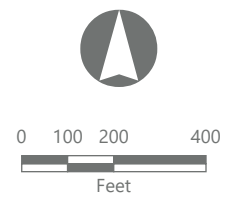
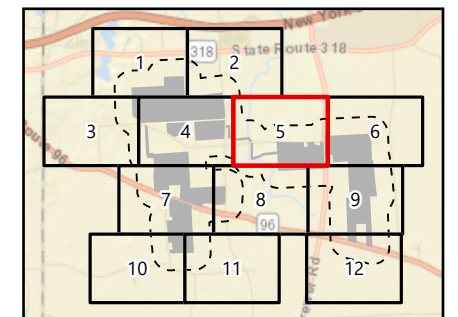
Prepared October 17, 2024
Basemap: USDA NAIP "2022 New York 60 cm" orthoimagery map service

North Seneca Solar Project

Towns of Waterloo and Junius
Seneca County, New York

Article VIII
Application Supplement
Matter No. 23-00036

- Land Use
- Agricultural
 - Residential
 - Vacant Land
 - Commercial
 - Community Services
- Facility Components
- Access Road
 - Collection Line
 - PV Array Area
 - Inverter
 - Fence Line
 - Facility Site



Prepared October 17, 2024
Basemap: USDA NAIP "2022 New York 60 cm" orthoimagery map service

North Seneca Solar Project

Towns of Waterloo and Junius
Seneca County, New York

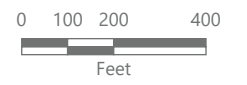
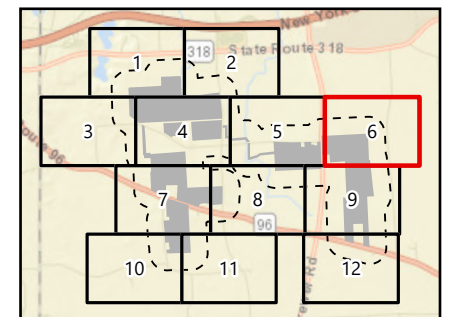
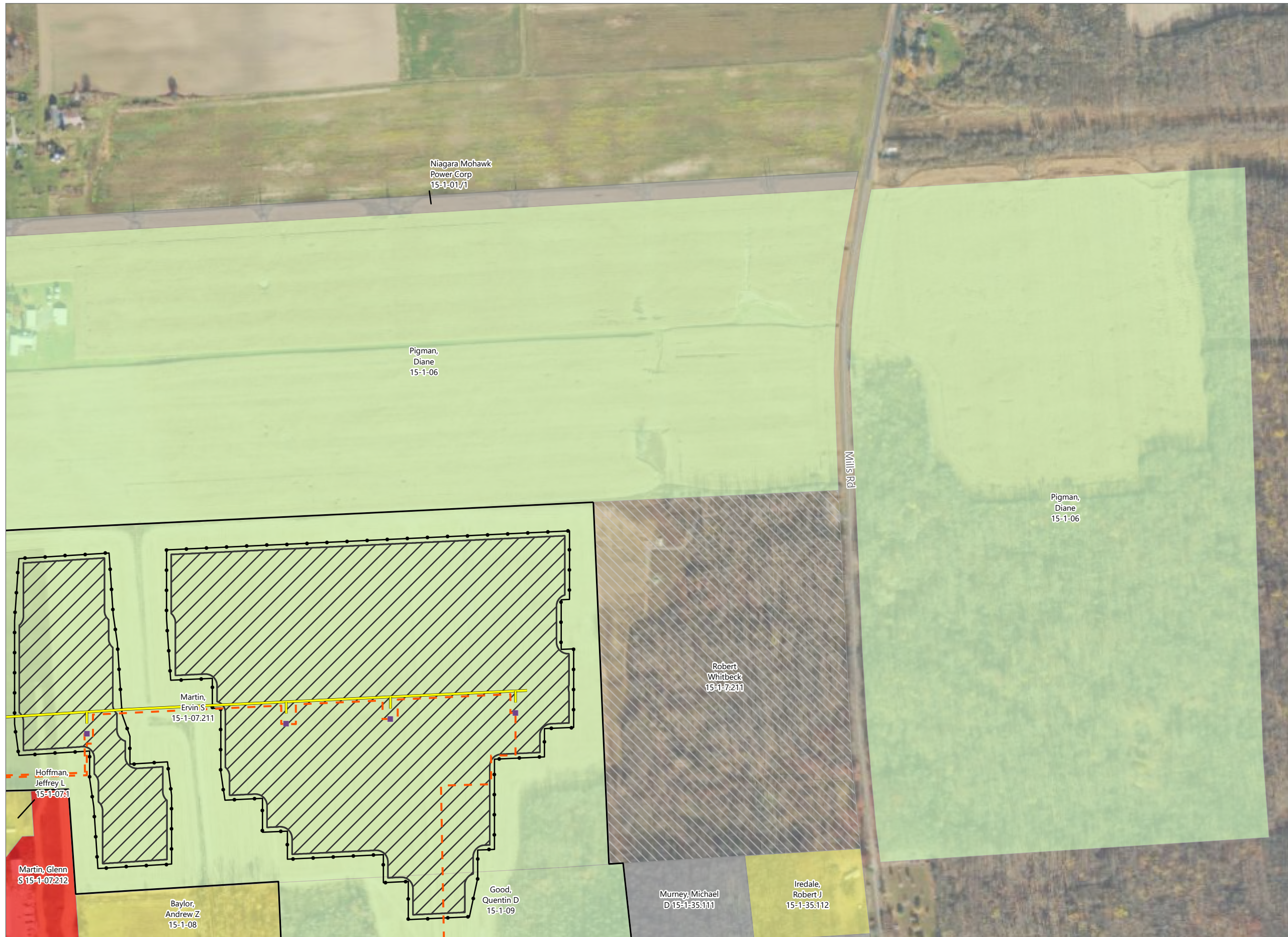
Article VIII
Application Supplement
Matter No. 23-00036

Land Use

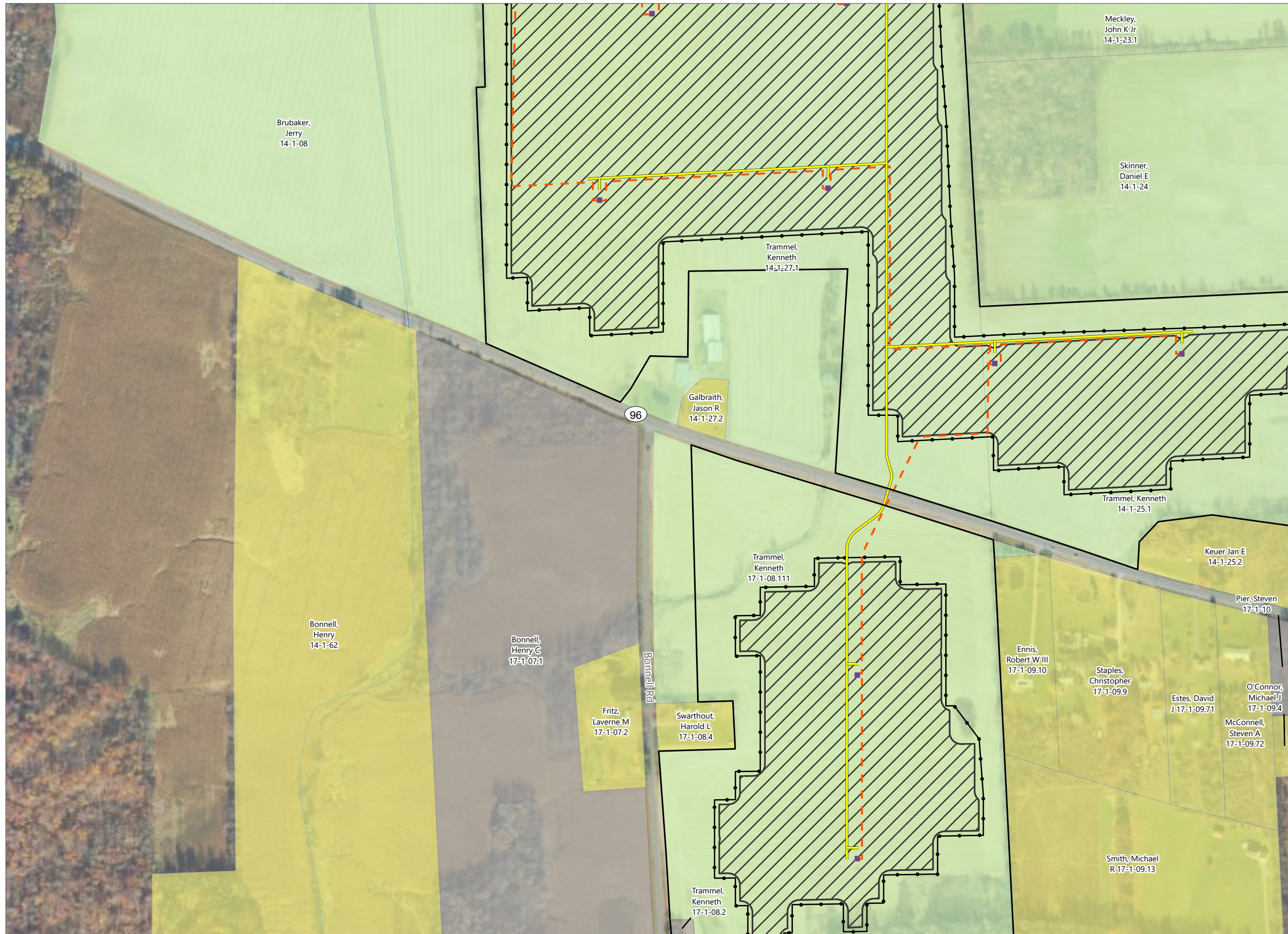
- Agricultural
- Residential
- Vacant Land
- Commercial
- Undefined

Facility Components

- Access Road
- Collection Line
- PV Array Area
- Inverter
- Fence Line
- Facility Site



Prepared October 17, 2024
Basemap: USDA NAIP "2022 New York 60 cm" orthoimagery map service

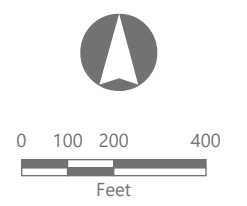
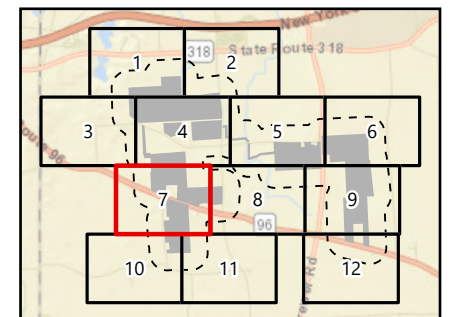


North Seneca Solar Project

Towns of Waterloo and Junius
Seneca County, New York

Article VIII
Application Supplement
Matter No. 23-00036

- Land Use
- Agricultural
 - Residential
 - Vacant Land
- Facility Components
- Access Road
 - Collection Line
 - PV Array Area
 - Inverter
 - Fence Line
 - Facility Site



Prepared October 17, 2024
Basemap: USDA NAIP "2022 New York 60 cm" orthoimagery map service

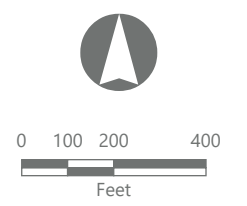
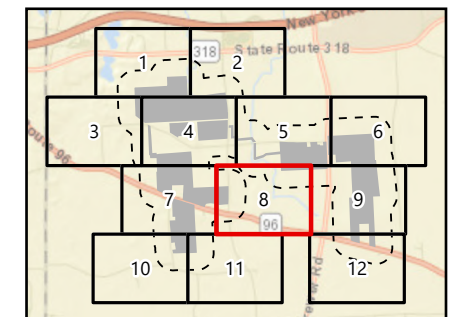


North Seneca Solar Project

Towns of Waterloo and Junius
Seneca County, New York

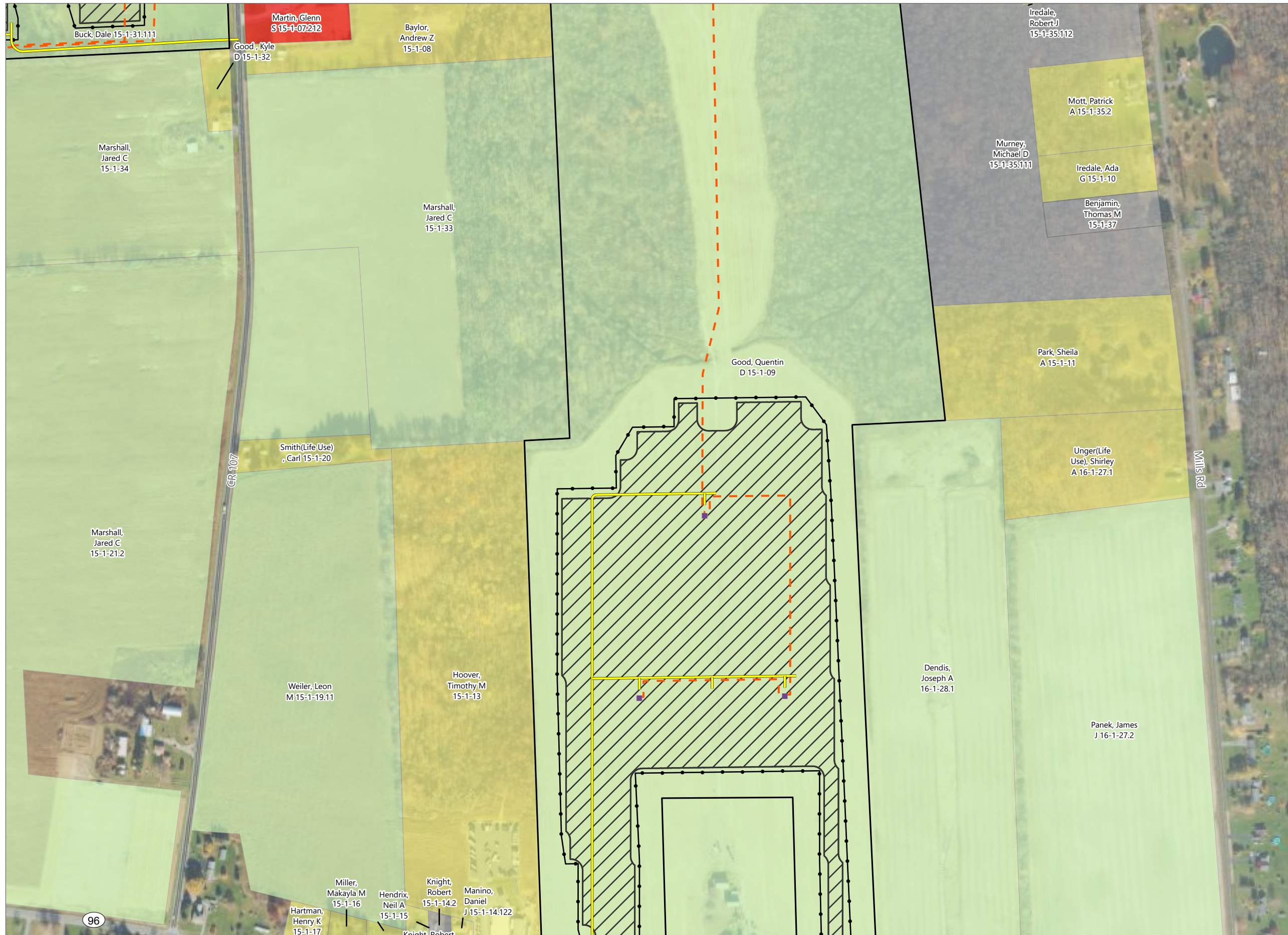
Article VIII Application Supplement Matter No. 23-00036

- Land Use
- Agricultural
 - Residential
 - Vacant Land
 - Community Services
- Facility Components
- Access Road
 - Collection Line
 - PV Array Area
 - Fence Line
 - Facility Site



Prepared October 17, 2024
Basemap: USDA NAIP "2022 New York 60 cm" orthoimagery map service

Figure 3-5. Parcels within 1,000 feet of the Facility Site - Revision 1

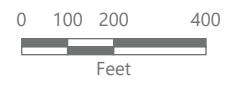
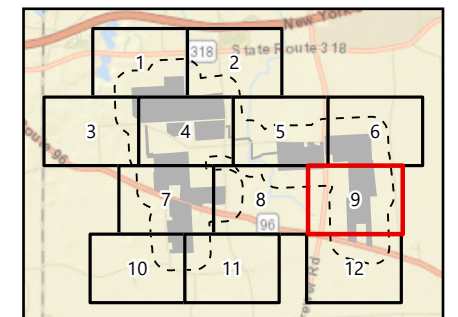


North Seneca Solar Project

Towns of Waterloo and Junius
Seneca County, New York

Article VIII
Application Supplement
Matter No. 23-00036

- Land Use**
- Agricultural
 - Residential
 - Vacant Land
 - Commercial
- Facility Components**
- Access Road
 - Collection Line
 - PV Array Area
 - Inverter
 - Fence Line
 - Facility Site



Prepared October 17, 2024
Basemap: USDA NAIP "2022 New York 60 cm" orthoimagery map service



North Seneca Solar Project

Towns of Waterloo and Junius
Seneca County, New York

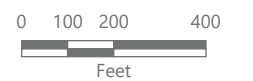
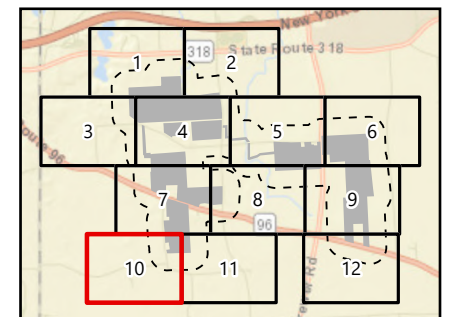
Article VIII
Application Supplement
Matter No. 23-00036

Land Use

- Agricultural
- Residential
- Vacant Land

Facility Components

- PV Array Area
- Fence Line
- Facility Site



Prepared October 17, 2024
Basemap: USDA NAIP "2022 New York 60 cm"
orthoimagery map service

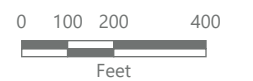
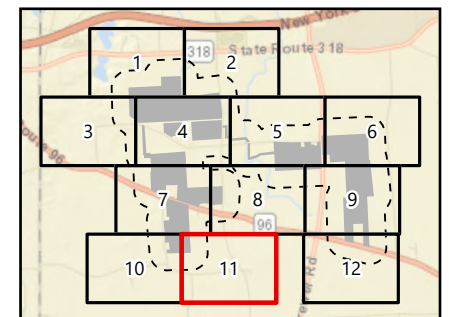


North Seneca Solar Project

Towns of Waterloo and Junius
Seneca County, New York

Article VIII
Application Supplement
Matter No. 23-00036

- Land Use
- Agricultural
 - Residential
 - Vacant Land
- Facility Components
- Facility Site



Prepared October 17, 2024
Basemap: USDA NAIP "2022 New York 60 cm" orthoimagery map service

Figure 3-5. Parcels within 1,000 feet of the Facility Site - Revision 1

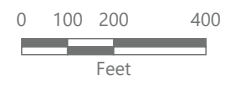
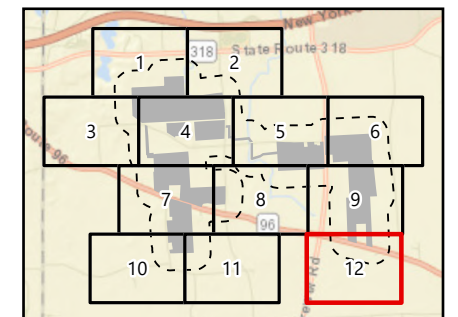


North Seneca Solar Project

Towns of Waterloo and Junius
Seneca County, New York

Article VIII
Application Supplement
Matter No. 23-00036

- Land Use
- Agricultural
 - Residential
 - Vacant Land
 - Recreation and entertainment
 - Community Services
- Facility Components
- Access Road
 - PV Array Area
 - Fence Line
 - Facility Site



Prepared October 17, 2024
Basemap: USDA NAIP "2022 New York 60 cm" orthoimagery map service