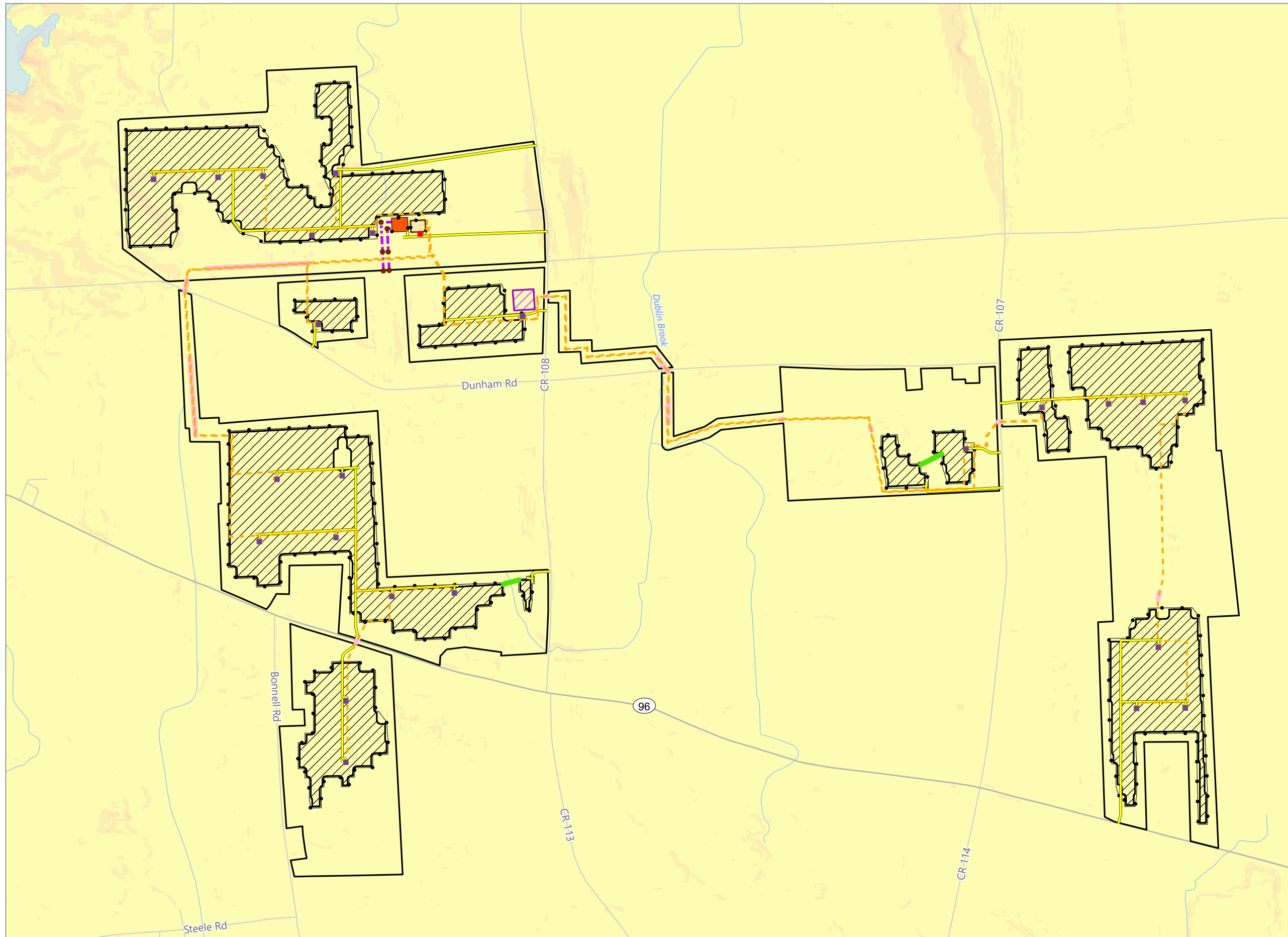


Figure 10-1. Slopes - Revision 1



North Seneca Solar Project

Towns of Waterloo and Junius
Seneca County, New York

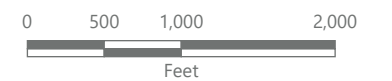
Article VIII
Application Supplement
Matter No. 23-00036

Slope

- 0-3%
- 3-8%
- 8-15%
- 15-25%
- 25-35%
- >35%

Facility Components

- Utility Pole
- Storage Trailer
- Access Road
- Collection Line
- Transmission Tap Line
- PV Array Area
- Trenchless Installation
- DC Cable Trenchless Installation
- Inverter
- Collection Substation
- POI Substation
- Fence Line
- Laydown Area
- Facility Site



Prepared October 16, 2024
Basemap: Slope derived from 1-meter resolution
USGS DEM data