

PROPOSED VIEW POST-INSTALLATION
UPDATED DESIGN



0 1 in 2 in
This scale is designed to ensure the simulation images are printed at the intended size.

VIEWPOINT 26
Ninefoot Road

North Seneca Solar
Visual Impact Assessment, Appendix 8-A Revision 1
EDR

Note: Printed at actual size, the resulting simulation image is 15 inches wide by 10 inches high. At this size and focal length, the simulation should be viewed from a distance 21 inches from the eye of the viewer.

PROPOSED VIEW POST-INSTALLATION (MITIGATION - LEAF ON)
APPLICATION DESIGN



0 1 in 2 in
This scale is designed to ensure the simulation images are printed at the intended size.

VIEWPOINT 26
Ninefoot Road

North Seneca Solar
Visual Impact Assessment, Appendix 8-A Revision 1
EDR

Note: Printed at actual size, the resulting simulation image is 15 inches wide by 10 inches high. At this size and focal length, the simulation should be viewed from a distance 21 inches from the eye of the viewer.

PROPOSED VIEW POST-INSTALLATION (MITIGATION - LEAF ON)
UPDATED DESIGN



0 1 in 2 in
This scale is designed to ensure the simulation images are printed at the intended size.

VIEWPOINT 26
Ninefoot Road

North Seneca Solar
Visual Impact Assessment, Appendix 8-A Revision 1



Note: Printed at actual size, the resulting simulation image is 15 inches wide by 10 inches high. At this size and focal length, the simulation should be viewed from a distance 21 inches from the eye of the viewer.

PROPOSED VIEW POST-INSTALLATION (MITIGATION - LEAF OFF)
APPLICATION DESIGN



0 1 in 2 in
This scale is designed to ensure the simulation images are printed at the intended size.

VIEWPOINT 26
Ninefoot Road

North Seneca Solar
Visual Impact Assessment, Appendix 8-A Revision 1
EDR

Note: Printed at actual size, the resulting simulation image is 15 inches wide by 10 inches high. At this size and focal length, the simulation should be viewed from a distance 21 inches from the eye of the viewer.

PROPOSED VIEW POST-INSTALLATION (MITIGATION - LEAF OFF)
UPDATED DESIGN



0 1 in 2 in
This scale is designed to ensure the simulation images are printed at the intended size.

VIEWPOINT 26
Ninefoot Road

North Seneca Solar
Visual Impact Assessment, Appendix 8-A Revision 1



Note: Printed at actual size, the resulting simulation image is 15 inches wide by 10 inches high. At this size and focal length, the simulation should be viewed from a distance 21 inches from the eye of the viewer.

PROPOSED VIEW 5-7 YEARS POST-INSTALLATION (MITIGATION - LEAF ON)
APPLICATION DESIGN



0 1 in 2 in
This scale is designed to ensure the simulation images are printed at the intended size.

VIEWPOINT 26
Ninefoot Road

North Seneca Solar
Visual Impact Assessment, Appendix 8-A Revision 1



Note: Printed at actual size, the resulting simulation image is 15 inches wide by 10 inches high. At this size and focal length, the simulation should be viewed from a distance 21 inches from the eye of the viewer.

PROPOSED VIEW 5-7 YEARS POST-INSTALLATION (MITIGATION - LEAF ON)
UPDATED DESIGN



0 1 in 2 in
This scale is designed to ensure the simulation images are printed at the intended size.

VIEWPOINT 26
Ninefoot Road

North Seneca Solar
Visual Impact Assessment, Appendix 8-A Revision 1
EDR

Note: Printed at actual size, the resulting simulation image is 15 inches wide by 10 inches high. At this size and focal length, the simulation should be viewed from a distance 21 inches from the eye of the viewer.

PROPOSED VIEW 5-7 YEARS POST-INSTALLATION (MITIGATION - LEAF OFF)
APPLICATION DESIGN



0 1 in 2 in
This scale is designed to ensure the simulation images are printed at the intended size.

VIEWPOINT 26
Ninefoot Road

North Seneca Solar
Visual Impact Assessment, Appendix 8-A Revision 1



Note: Printed at actual size, the resulting simulation image is 15 inches wide by 10 inches high. At this size and focal length, the simulation should be viewed from a distance 21 inches from the eye of the viewer.

PROPOSED VIEW 5-7 YEARS POST-INSTALLATION (MITIGATION - LEAF OFF)
UPDATED DESIGN



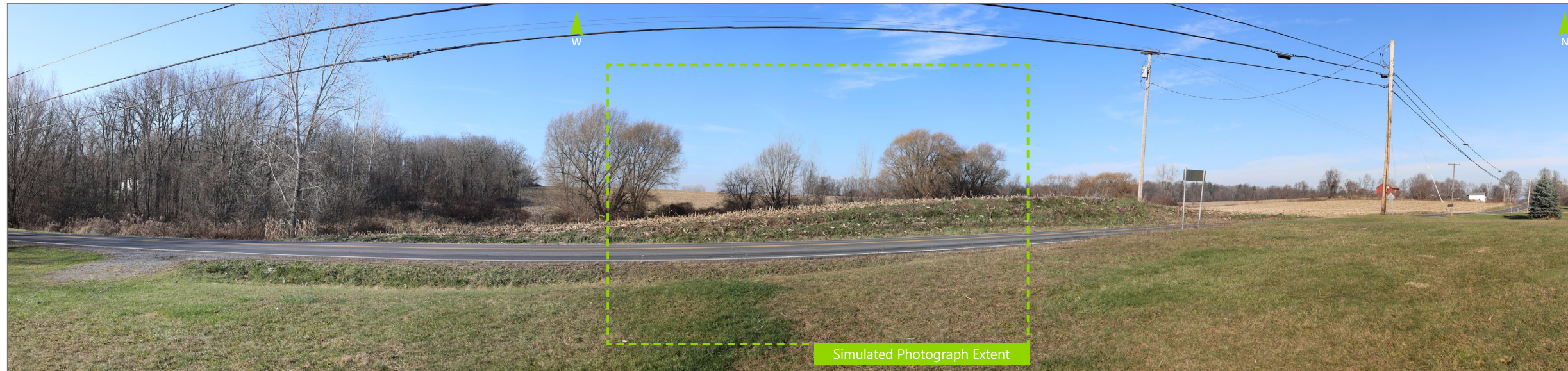
0 1 in 2 in
This scale is designed to ensure the simulation images are printed at the intended size.

VIEWPOINT 26
Ninefoot Road

North Seneca Solar
Visual Impact Assessment, Appendix 8-A Revision 1



Note: Printed at actual size, the resulting simulation image is 15 inches wide by 10 inches high. At this size and focal length, the simulation should be viewed from a distance 21 inches from the eye of the viewer.



Note: The image above is a panorama composition panning clockwise from southwest (left) to north (right).

VIEWPOINT 41
Quaker Cemetery

VIEWPOINT INFORMATION

Location: Quaker Cemetery
Municipality: Town of Waterloo
County: Seneca
Latitude: 42.92966° N
Longitude: 76.92304° W

LOCATION INFORMATION

Distance Zone Represented in View: Foreground
Viewer Distance*: 0.2 miles (870 feet)
Landscape Similarity Zone: Agricultural/Rural Residential

Viewer/User Group(s): Local Residents

Visually Sensitive Resource(s): VSR ID # 12 - Erie Canalway Heritage Corridor, VSR ID # 39 - Quaker Cemetery

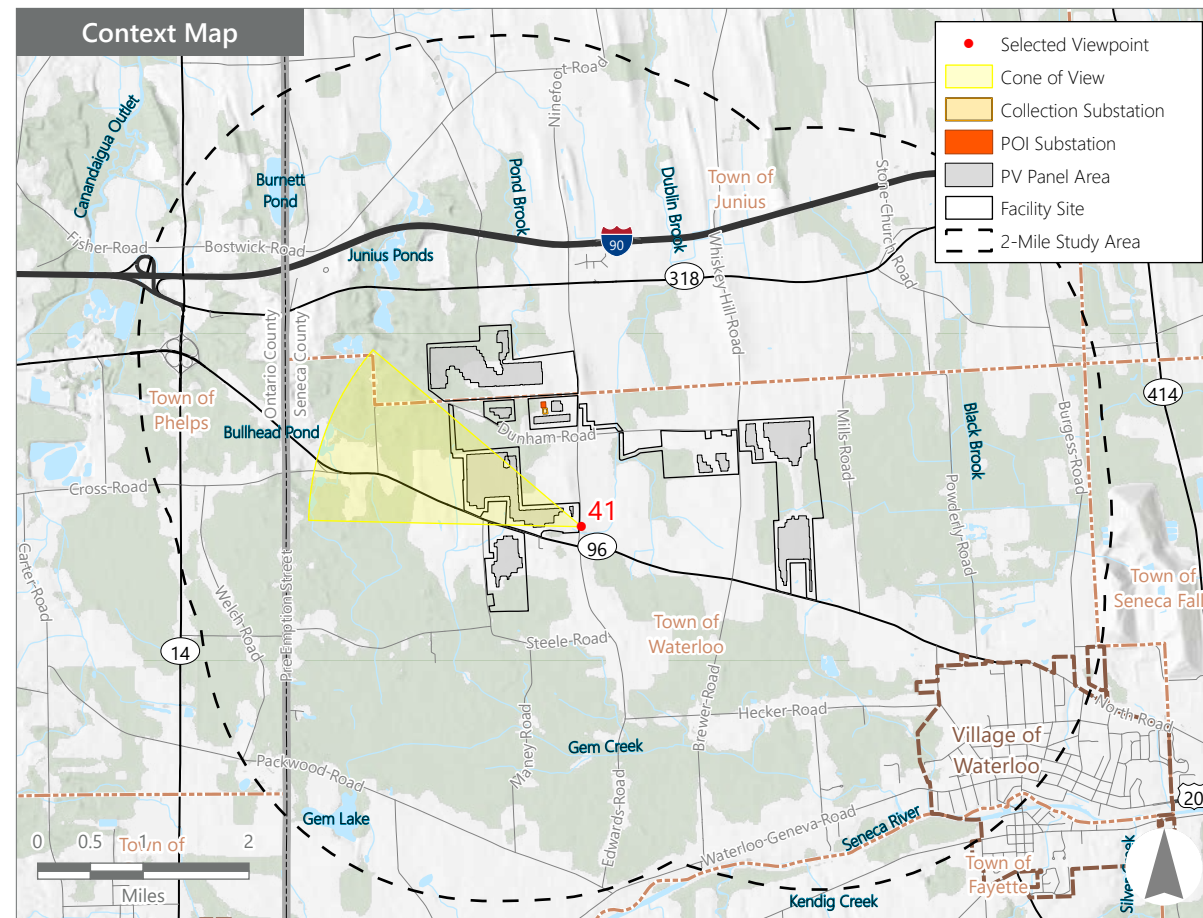
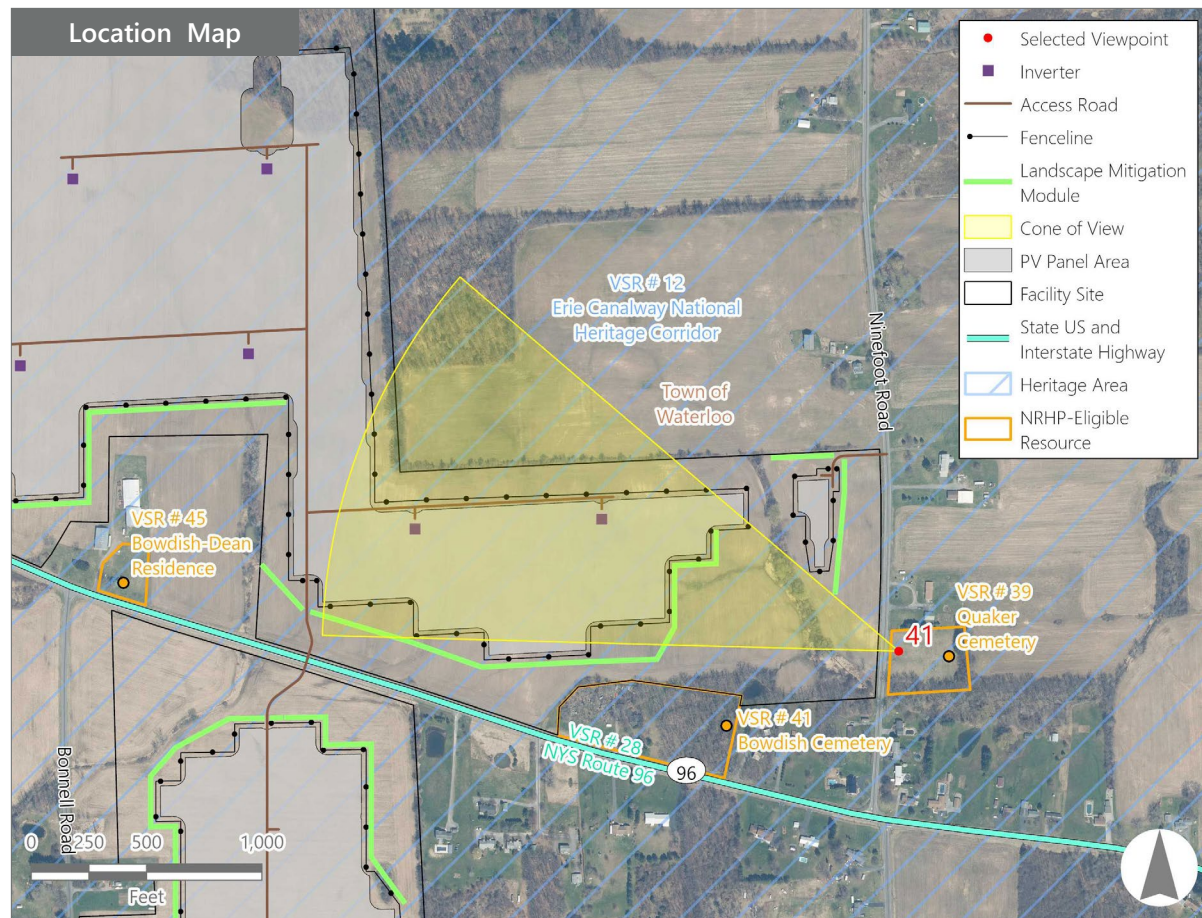
PHOTOGRAPH INFORMATION

Date: November 30, 2023
Time: 10:03 AM
Camera: Canon EOS 5D Mark IV
Resolution: 30.4 Megapixels
Lens Focal Length (35mm equivalent): 50 mm
Camera Elevation: 522 feet
Field of View: 39 degrees
Direction of View: West
Printed Size: 10" x 15"
Viewing Distance:** 21 inches

NOTES

*Distance as measured from the viewpoint to the nearest PV panels or Interconnection Facility component within the simulated photograph's field of view.

**The simulation is at the correct perspective when printed on an 11-by-17 sheet at full scale, and viewed approximately 21 inches from the eye of the viewer.



North Seneca Solar Project

Towns of Junius and Waterloo, Seneca County, New York

Visual Impact Assessment
Appendix 8-A Revision 1

EXISTING VIEW



0 1 in 2 in
This scale is designed to ensure the simulation images are printed at the intended size.

VIEWPOINT 41
Quaker Cemetery

North Seneca Solar
Visual Impact Assessment, Appendix 8-A Revision 1
EDR

Note: Printed at actual size, the existing view image is 15 inches wide by 10 inches high. At this size and focal length, the existing view image should be viewed from a distance 21 inches from the eye of the viewer.

PROPOSED VIEW POST-INSTALLATION
APPLICATION DESIGN



0 1 in 2 in
This scale is designed to ensure the simulation images are printed at the intended size.

VIEWPOINT 41
Quaker Cemetery

North Seneca Solar
Visual Impact Assessment, Appendix 8-A Revision 1
EDR

Note: Printed at actual size, the resulting simulation image is 15 inches wide by 10 inches high. At this size and focal length, the simulation should be viewed from a distance 21 inches from the eye of the viewer.

PROPOSED VIEW POST-INSTALLATION
UPDATED DESIGN



0 1 in 2 in
This scale is designed to ensure the simulation images are printed at the intended size.

VIEWPOINT 41
Quaker Cemetery

North Seneca Solar
Visual Impact Assessment, Appendix 8-A Revision 1
EDR

Note: Printed at actual size, the resulting simulation image is 15 inches wide by 10 inches high. At this size and focal length, the simulation should be viewed from a distance 21 inches from the eye of the viewer.

PROPOSED VIEW POST-INSTALLATION (MITIGATION - LEAF ON)
APPLICATION DESIGN



0 1 in 2 in
This scale is designed to ensure the simulation images are printed at the intended size.

VIEWPOINT 41
Quaker Cemetery

North Seneca Solar
Visual Impact Assessment, Appendix 8-A Revision 1
EDR

Note: Printed at actual size, the resulting simulation image is 15 inches wide by 10 inches high. At this size and focal length, the simulation should be viewed from a distance 21 inches from the eye of the viewer.