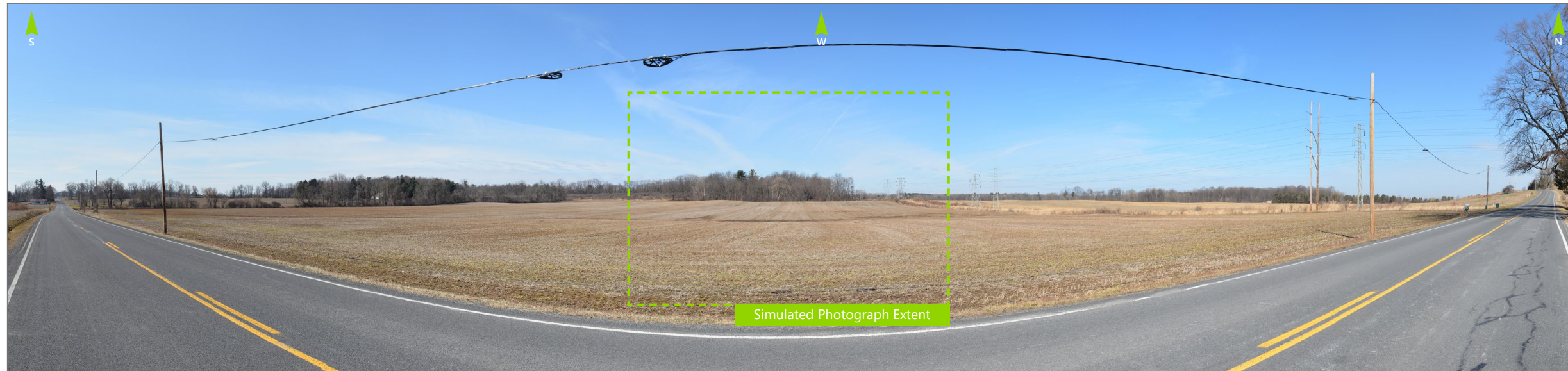


Attachment H

Updated Photosimulations



Note: The image above is a panorama composition panning clockwise from south (left) to north (right).

VIEWPOINT 25
Ninefoot Road

VIEWPOINT INFORMATION

Location: Ninefoot Road
Municipality: Town of Waterloo
County: Seneca
Latitude: 42.94215° N
Longitude: 76.92339° W

LOCATION INFORMATION

Distance Zone Represented in View: Foreground
Viewer Distance*: 0.1 miles (600 feet)
Landscape Similarity Zone: Agricultural/Rural Residential
Viewer/User Group(s): Local Residents
Visually Sensitive Resource(s): VSR ID # 12 - Erie Canalway Heritage Corridor

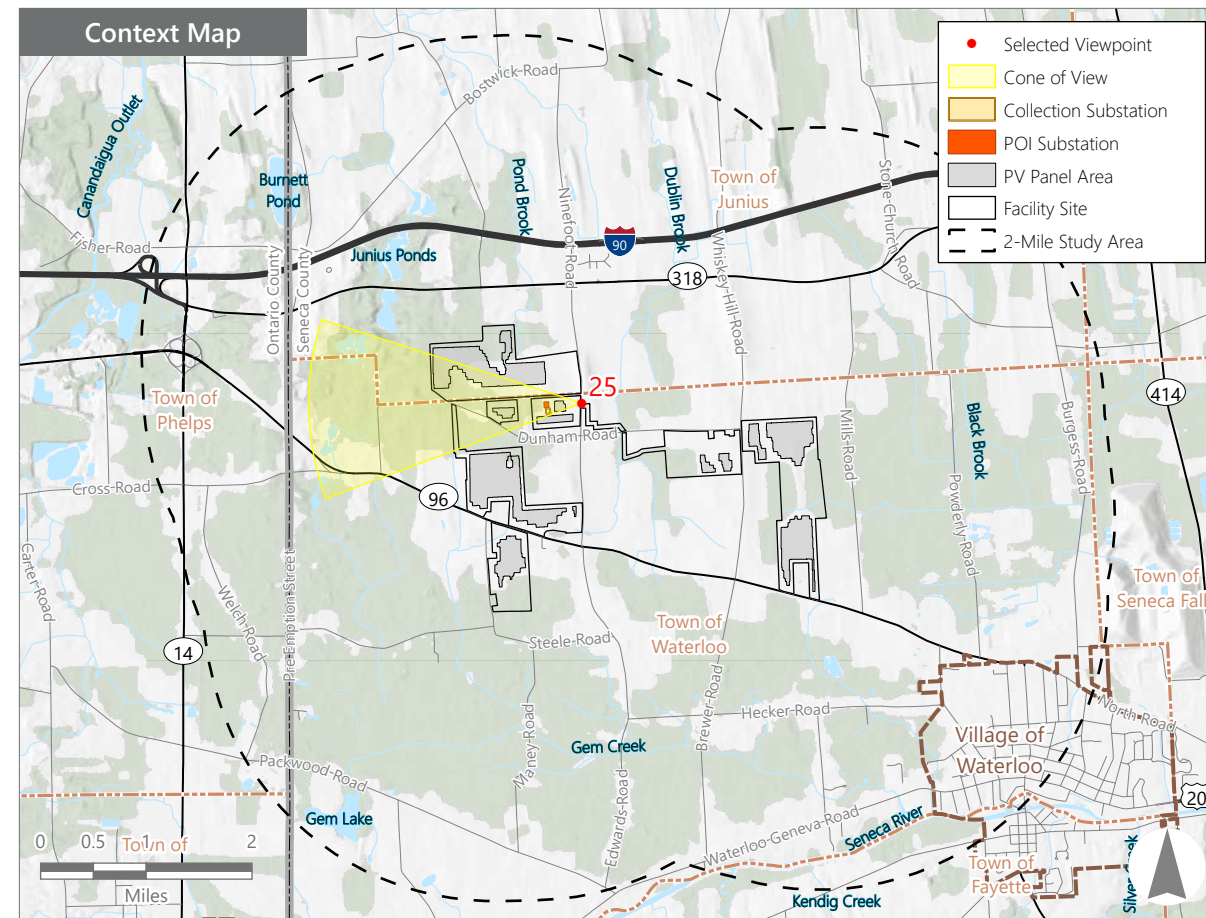
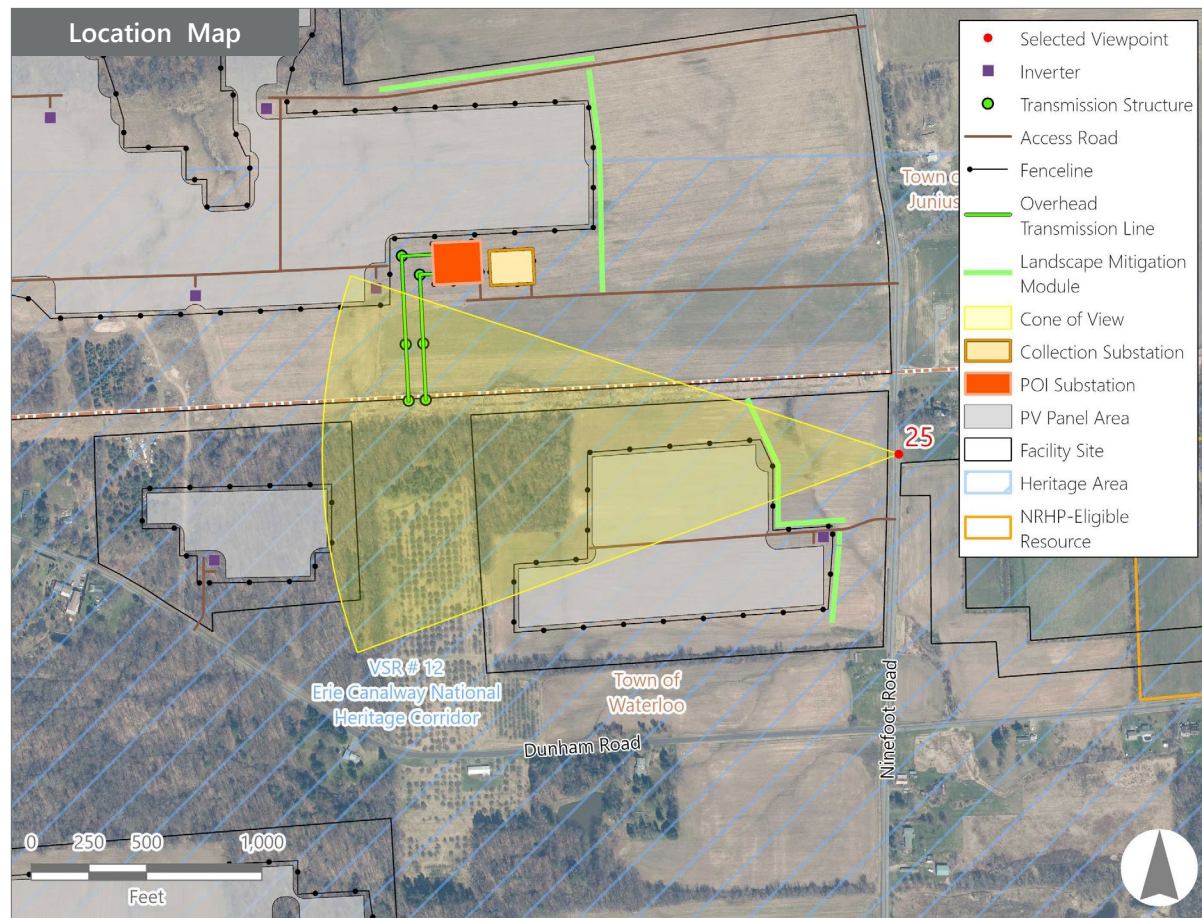
PHOTOGRAPH INFORMATION

Date: March 22, 2023
Time: 10:06 AM
Camera: Nikon D7100
Resolution: 24 Megapixels
Lens Focal Length (35mm equivalent): 51 mm
Camera Elevation: 507 feet
Field of View: 38 degrees
Direction of View: West
Printed Size: 10" x 15"
Viewing Distance:** 22 inches

NOTES

*Distance as measured from the viewpoint to the nearest PV panels or Interconnection Facility component within the simulated photograph's field of view.

**The simulation is at the correct perspective when printed on an 11-by-17 sheet at full scale, and viewed approximately 22 inches from the eye of the viewer.



North Seneca Solar Project

Towns of Junius and Waterloo, Seneca County, New York

Visual Impact Assessment
 Appendix 8-A Revision 1

EXISTING VIEW



0 1 in 2 in
This scale is designed to ensure the simulation images are printed at the intended size.

VIEWPOINT 25
Ninefoot Road

North Seneca Solar
Visual Impact Assessment, Appendix 8-A Revision 1

EDR

Note: Printed at actual size, the existing view image is 15 inches wide by 10 inches high. At this size and focal length, the existing view image should be viewed from a distance 22 inches from the eye of the viewer.

PROPOSED VIEW POST-INSTALLATION
APPLICATION DESIGN



0 1 in 2 in
This scale is designed to ensure the simulation images are printed at the intended size.

VIEWPOINT 25
Ninefoot Road

North Seneca Solar
Visual Impact Assessment, Appendix 8-A Revision 1



Note: Printed at actual size, the resulting simulation image is 15 inches wide by 10 inches high. At this size and focal length, the simulation should be viewed from a distance 22 inches from the eye of the viewer.

PROPOSED VIEW POST-INSTALLATION
UPDATED DESIGN



0 1 in 2 in
This scale is designed to ensure the simulation images are printed at the intended size.

VIEWPOINT 25
Ninefoot Road

North Seneca Solar
Visual Impact Assessment, Appendix 8-A Revision 1



Note: Printed at actual size, the resulting simulation image is 15 inches wide by 10 inches high. At this size and focal length, the simulation should be viewed from a distance 22 inches from the eye of the viewer.

PROPOSED VIEW POST-INSTALLATION (MITIGATION - LEAF ON)
APPLICATION DESIGN



0 1 in 2 in
This scale is designed to ensure the simulation images are printed at the intended size.

VIEWPOINT 25
Ninefoot Road

North Seneca Solar
Visual Impact Assessment, Appendix 8-A Revision 1
EDR

Note: Printed at actual size, the resulting simulation image is 15 inches wide by 10 inches high. At this size and focal length, the simulation should be viewed from a distance 22 inches from the eye of the viewer.

PROPOSED VIEW POST-INSTALLATION (MITIGATION - LEAF ON)
UPDATED DESIGN



0 1 in 2 in
This scale is designed to ensure the simulation images are printed at the intended size.

VIEWPOINT 25
Ninefoot Road

North Seneca Solar
Visual Impact Assessment, Appendix 8-A Revision 1
EDR

Note: Printed at actual size, the resulting simulation image is 15 inches wide by 10 inches high. At this size and focal length, the simulation should be viewed from a distance 22 inches from the eye of the viewer.

PROPOSED VIEW POST-INSTALLATION (MITIGATION - LEAF OFF)
APPLICATION DESIGN



0 1 in 2 in
This scale is designed to ensure the simulation images are printed at the intended size.

VIEWPOINT 25
Ninefoot Road

North Seneca Solar
Visual Impact Assessment, Appendix 8-A Revision 1



Note: Printed at actual size, the resulting simulation image is 15 inches wide by 10 inches high. At this size and focal length, the simulation should be viewed from a distance 22 inches from the eye of the viewer.

PROPOSED VIEW POST-INSTALLATION (MITIGATION - LEAF OFF)
UPDATED DESIGN



0 1 in 2 in
This scale is designed to ensure the simulation images are printed at the intended size.

VIEWPOINT 25
Ninefoot Road

North Seneca Solar
Visual Impact Assessment, Appendix 8-A Revision 1
EDR

Note: Printed at actual size, the resulting simulation image is 15 inches wide by 10 inches high. At this size and focal length, the simulation should be viewed from a distance 22 inches from the eye of the viewer.

PROPOSED VIEW 5-7 YEARS POST-INSTALLATION (MITIGATION - LEAF ON)
APPLICATION DESIGN



0 1 in 2 in
This scale is designed to ensure the simulation images are printed at the intended size.

VIEWPOINT 25
Ninefoot Road

North Seneca Solar
Visual Impact Assessment, Appendix 8-A Revision 1



Note: Printed at actual size, the resulting simulation image is 15 inches wide by 10 inches high. At this size and focal length, the simulation should be viewed from a distance 22 inches from the eye of the viewer.

PROPOSED VIEW 5-7 YEARS POST-INSTALLATION (MITIGATION - LEAF ON)
UPDATED DESIGN



0 1 in 2 in
This scale is designed to ensure the simulation images are printed at the intended size.

VIEWPOINT 25
Ninefoot Road

North Seneca Solar
Visual Impact Assessment, Appendix 8-A Revision 1

EDR

Note: Printed at actual size, the resulting simulation image is 15 inches wide by 10 inches high. At this size and focal length, the simulation should be viewed from a distance 22 inches from the eye of the viewer.

PROPOSED VIEW 5-7 YEARS POST-INSTALLATION (MITIGATION - LEAF OFF)
APPLICATION DESIGN



0 1 in 2 in
This scale is designed to ensure the simulation images are printed at the intended size.

VIEWPOINT 25
Ninefoot Road

North Seneca Solar
Visual Impact Assessment, Appendix 8-A Revision 1

EDR

Note: Printed at actual size, the resulting simulation image is 15 inches wide by 10 inches high. At this size and focal length, the simulation should be viewed from a distance 22 inches from the eye of the viewer.

PROPOSED VIEW 5-7 YEARS POST-INSTALLATION (MITIGATION - LEAF OFF)
UPDATED DESIGN



0 1 in 2 in
This scale is designed to ensure the simulation images are printed at the intended size.

VIEWPOINT 25
Ninefoot Road

North Seneca Solar
Visual Impact Assessment, Appendix 8-A Revision 1

EDR

Note: Printed at actual size, the resulting simulation image is 15 inches wide by 10 inches high. At this size and focal length, the simulation should be viewed from a distance 22 inches from the eye of the viewer.



Note: The image above is a panorama composition panning clockwise from south (left) to northwest (right).

VIEWPOINT 26
Ninefoot Road

VIEWPOINT INFORMATION

Location: Ninefoot Road
Municipality: Town of Junius
County: Seneca
Latitude: 42.94606° N
Longitude: 76.92375° W

LOCATION INFORMATION

Distance Zone Represented in View: Foreground
Viewer Distance*: 0.2 miles (1,275 feet)
Landscape Similarity Zone: Agricultural/Rural Residential
Viewer/User Group(s): Local Residents
Visually Sensitive Resource(s): VSR ID # 12 - Erie Canalway Heritage Corridor

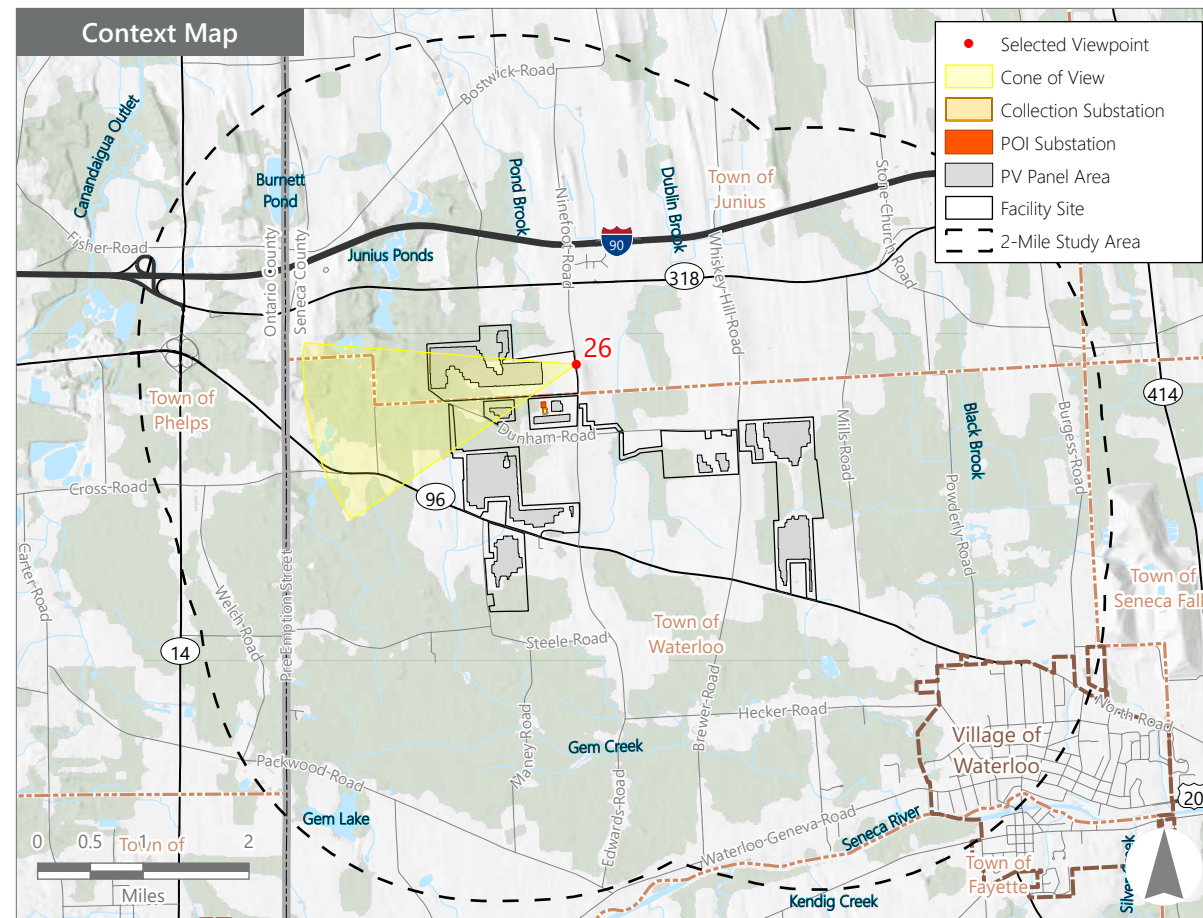
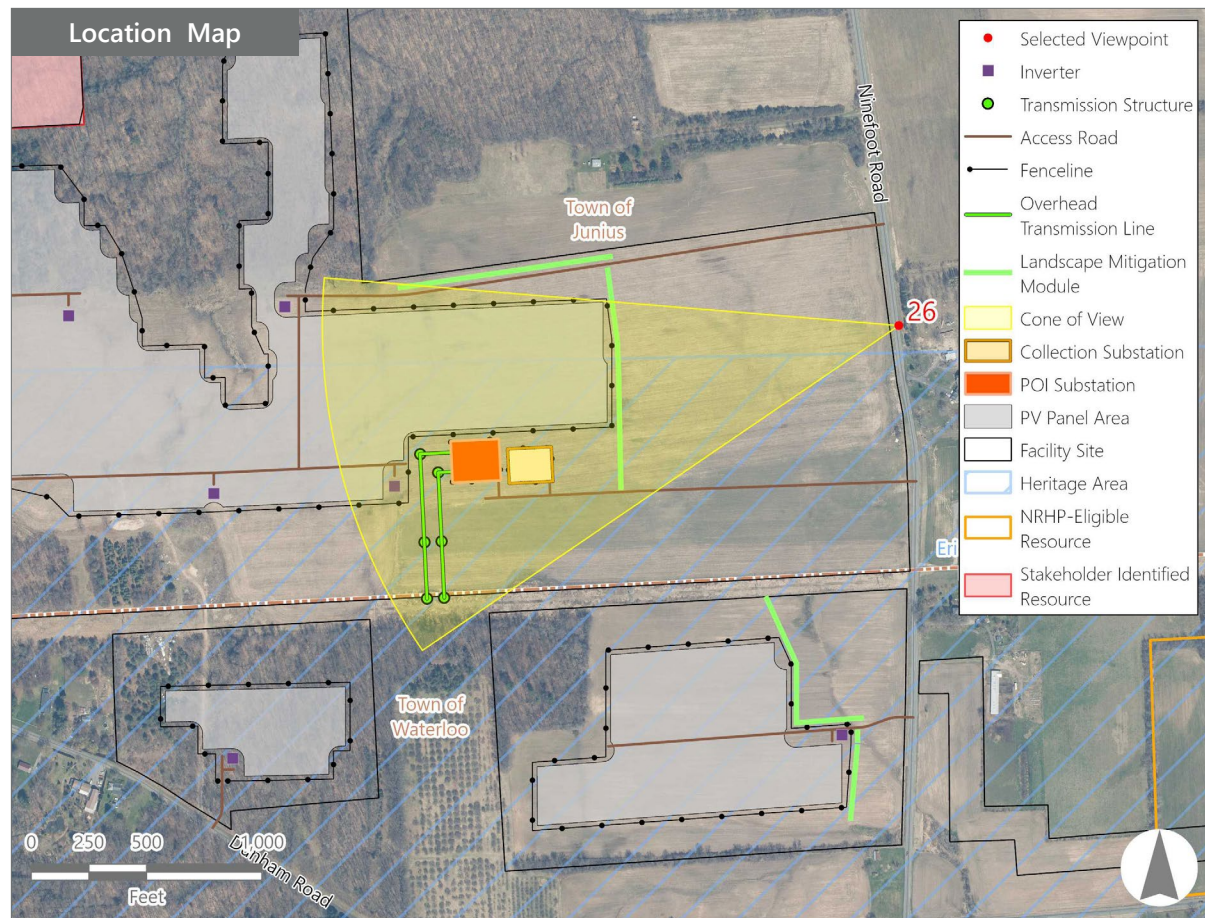
PHOTOGRAPH INFORMATION

Date: September 15, 2023
Time: 10:29 AM
Camera: Canon EOS 5D Mark IV
Resolution: 30.4 Megapixels
Lens Focal Length (35mm equivalent): 50 mm
Camera Elevation: 543 feet
Field of View: 39 degrees
Direction of View: West
Printed Size: 10" x 15"
Viewing Distance:** 21 inches

NOTES

*Distance as measured from the viewpoint to the nearest PV panels or Interconnection Facility component within the simulated photograph's field of view.

**The simulation is at the correct perspective when printed on an 11-by-17 sheet at full scale, and viewed approximately 21 inches from the eye of the viewer.



North Seneca Solar Project

Towns of Junius and Waterloo, Seneca County, New York

Visual Impact Assessment
 Appendix 8-A Revision 1

EXISTING VIEW



0 1 in 2 in
This scale is designed to ensure the simulation images are printed at the intended size.

VIEWPOINT 26
Ninefoot Road

North Seneca Solar
Visual Impact Assessment, Appendix 8-A Revision 1
EDR

Note: Printed at actual size, the existing view image is 15 inches wide by 10 inches high. At this size and focal length, the existing view image should be viewed from a distance 21 inches from the eye of the viewer.

PROPOSED VIEW POST-INSTALLATION
APPLICATION DESIGN



0 1 in 2 in
This scale is designed to ensure the simulation images are printed at the intended size.

VIEWPOINT 26
Ninefoot Road

North Seneca Solar
Visual Impact Assessment, Appendix 8-A Revision 1



Note: Printed at actual size, the resulting simulation image is 15 inches wide by 10 inches high. At this size and focal length, the simulation should be viewed from a distance 21 inches from the eye of the viewer.