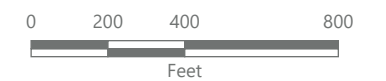
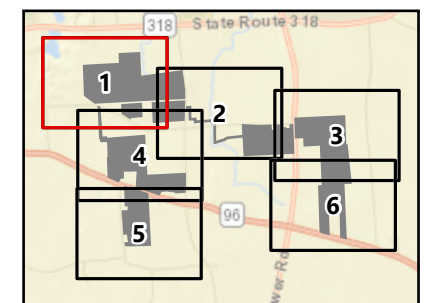


## North Seneca Solar Project

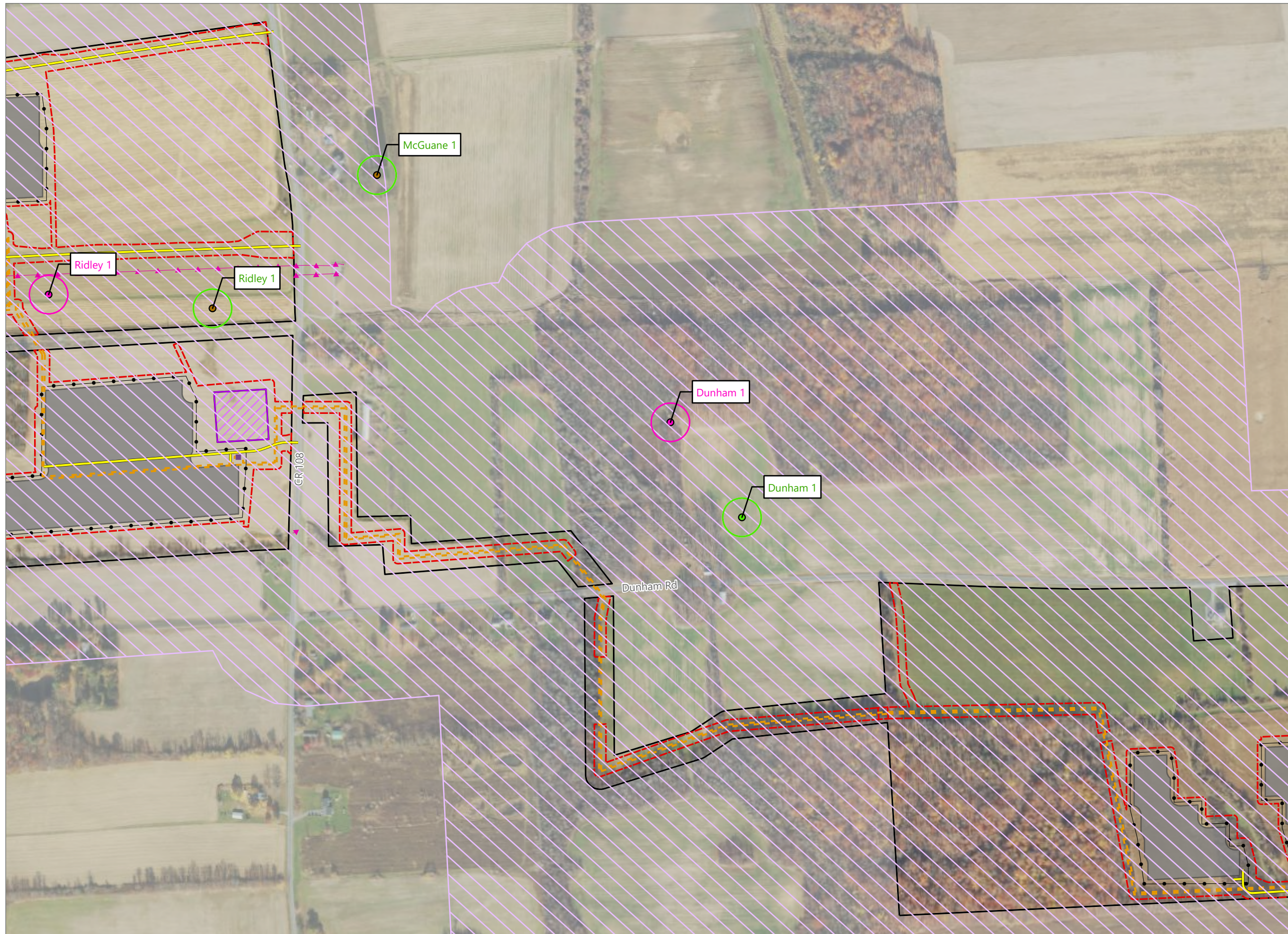
Towns of Waterloo and Junius  
Seneca County, New York

**Article VIII**  
**Application Supplement**  
**Matter No. 23-00036**

- Surveyed Well
  - ▲ Surveyed Underground Gas Line
  - 100-ft Surveyed Gas Well Structure Setback
  - Magnetometer Surveyed Area
- Facility Components
- Utility Pole
  - Storage Trailer
  - Access Road
  - - - Collection Line
  - - - Transmission Tap Line
  - PV Panel Array
  - Inverter
  - Collection Substation
  - POI Substation
  - Fence Line
  - Limit of Construction Activity
  - Facility Site



Prepared October 17, 2024  
Basemap: USDA NAIP "2022 New York 60cm" orthoimagery map service

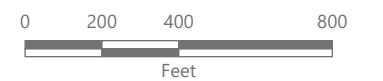
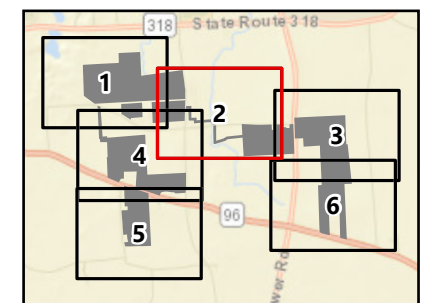


## North Seneca Solar Project

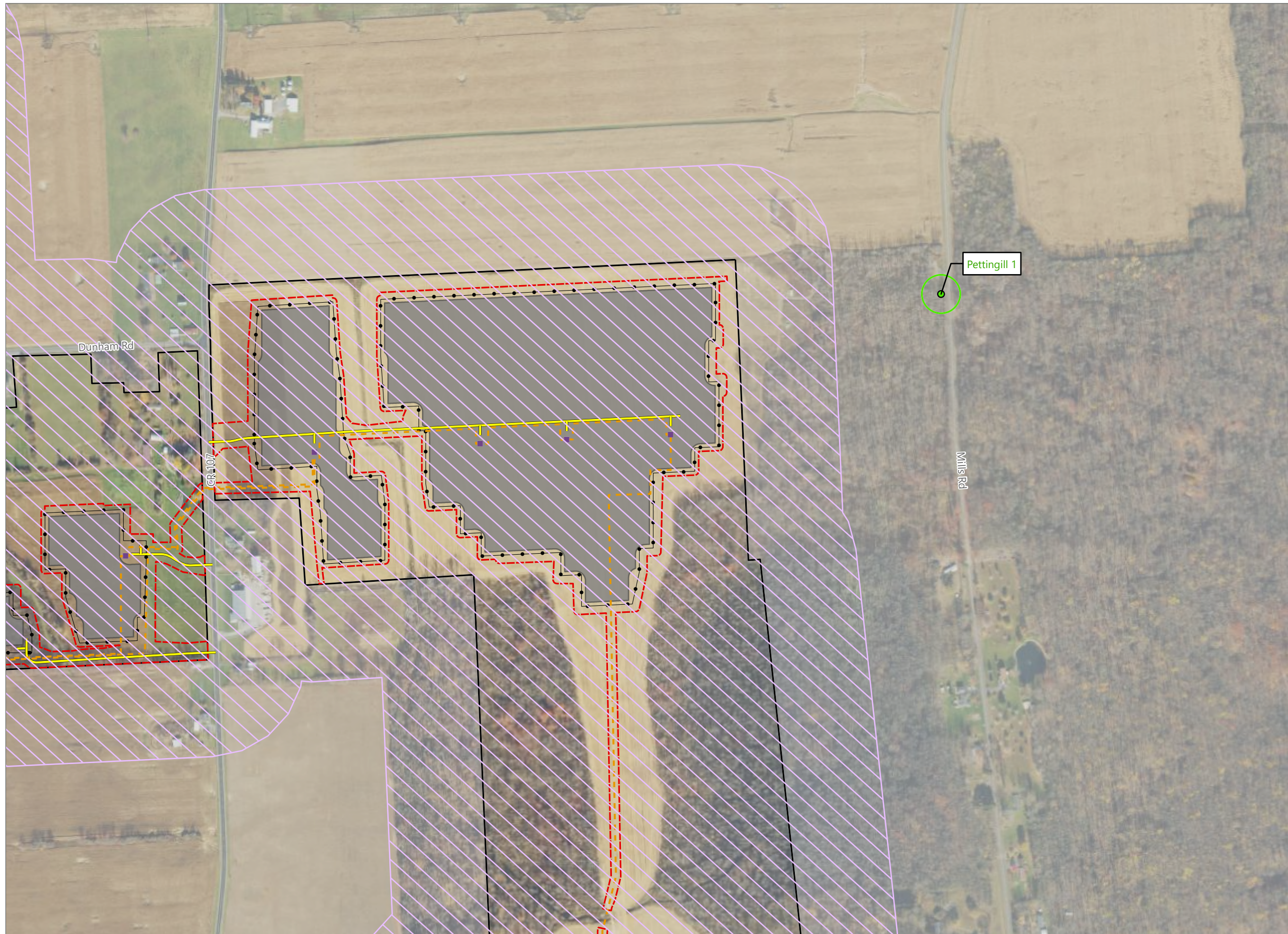
Towns of Waterloo and Junius  
Seneca County, New York

**Article VIII**  
**Application Supplement**  
**Matter No. 23-00036**

- Surveyed Well
- ▲ Surveyed Underground Gas Line
- 100-ft Surveyed Gas Well Structure Setback
- Magnetometer Surveyed Area
- Mapped NYSDEC Oil and Gas Well
  - Gas Well
  - Dry Hole
  - 100-ft DEC Gas Well Structure Setback
- Facility Components
  - Access Road
  - Collection Line
  - PV Panel Array
  - Inverter
  - Fence Line
  - Laydown Area
  - Limit of Construction Activity
  - Facility Site















Prepared October 17, 2024  
Basemap: USDA NAIP "2022 New York 60cm" orthoimagery map service

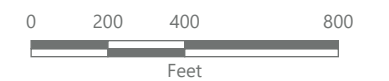
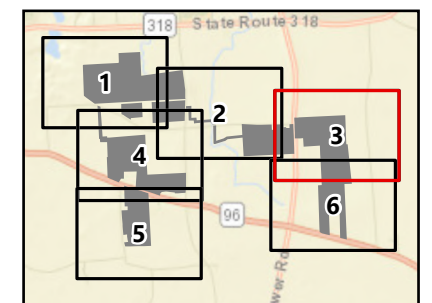


## North Seneca Solar Project

Towns of Waterloo and Junius  
Seneca County, New York

**Article VIII**  
**Application Supplement**  
**Matter No. 23-00036**

-  Magnetometer Surveyed Area
-  Mapped NYSDEC Oil and Gas Well
-  Dry Hole
-  100-ft DEC Gas Well Structure Setback
-  Facility Components
-  Access Road
-  Collection Line
-  PV Panel Array
-  Inverter
-  Fence Line
-  Limit of Construction Activity
-  Facility Site



Prepared October 17, 2024  
Basemap: USDA NAIP "2022 New York 60cm" orthoimagery map service

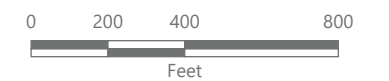
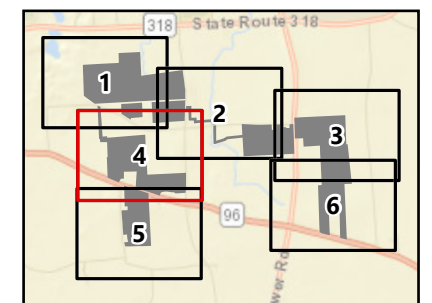


## North Seneca Solar Project

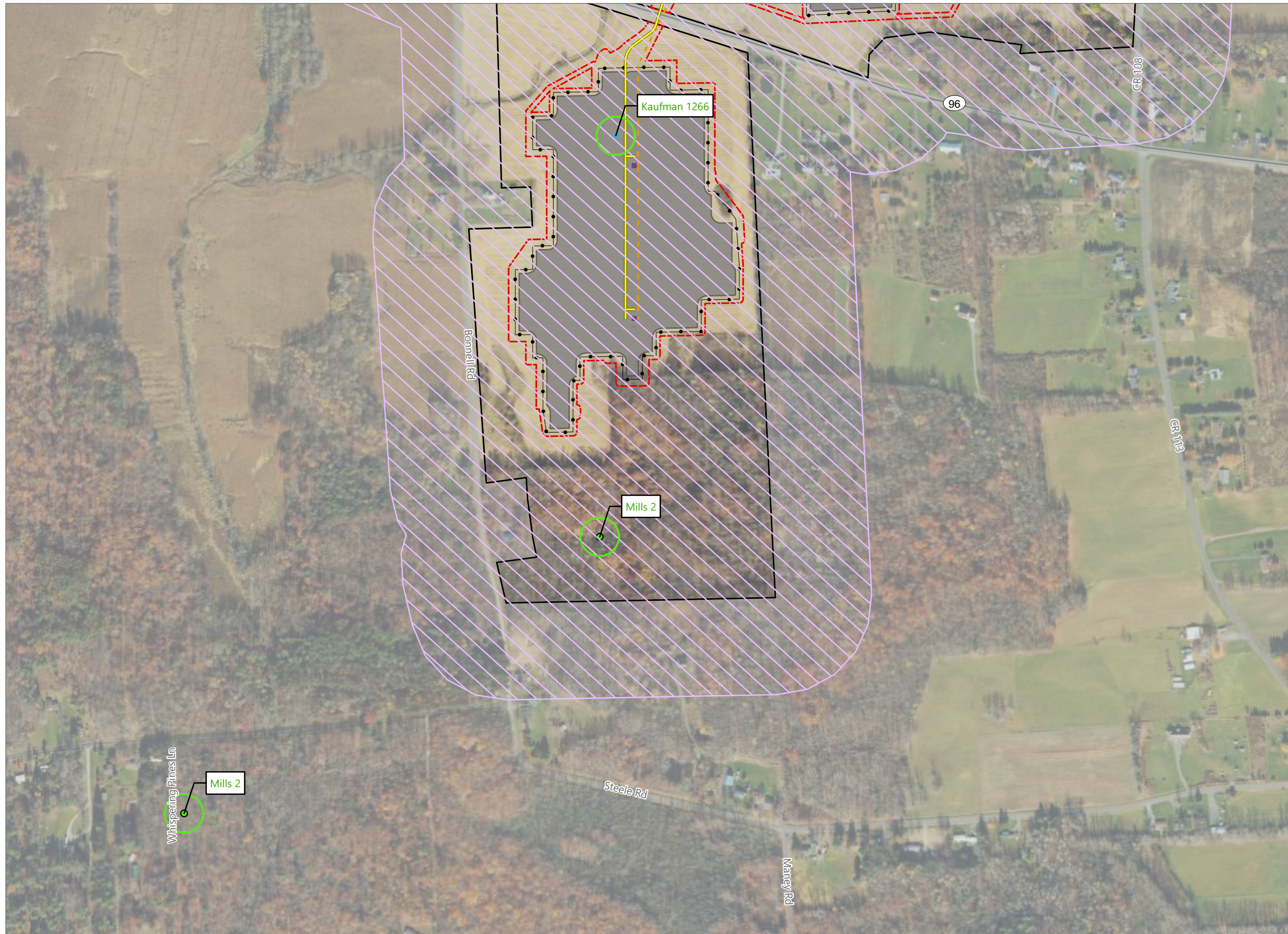
Towns of Waterloo and Junius  
Seneca County, New York

**Article VIII**  
**Application Supplement**  
**Matter No. 23-00036**

- Surveyed Well
- ▲ Surveyed Underground Gas Line
- 100-ft Surveyed Gas Well Structure Setback
- Magnetometer Surveyed Area
- Mapped NYSDEC Oil and Gas Well
- Dry Hole
- × Unlisted Well Classification
- 100-ft DEC Gas Well Structure Setback
- Facility Components
- Access Road
- Collection Line
- PV Panel Array
- Inverter
- Fence Line
- Laydown Area
- Limit of Construction Activity
- Facility Site



Prepared October 17, 2024  
Basemap: USDA NAIP "2022 New York 60cm" orthoimagery map service

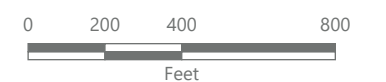
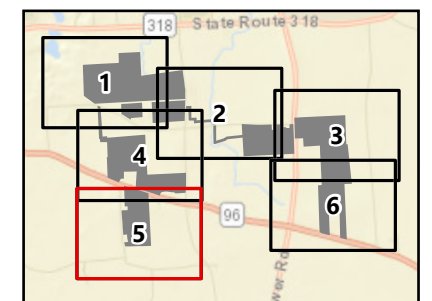


## North Seneca Solar Project

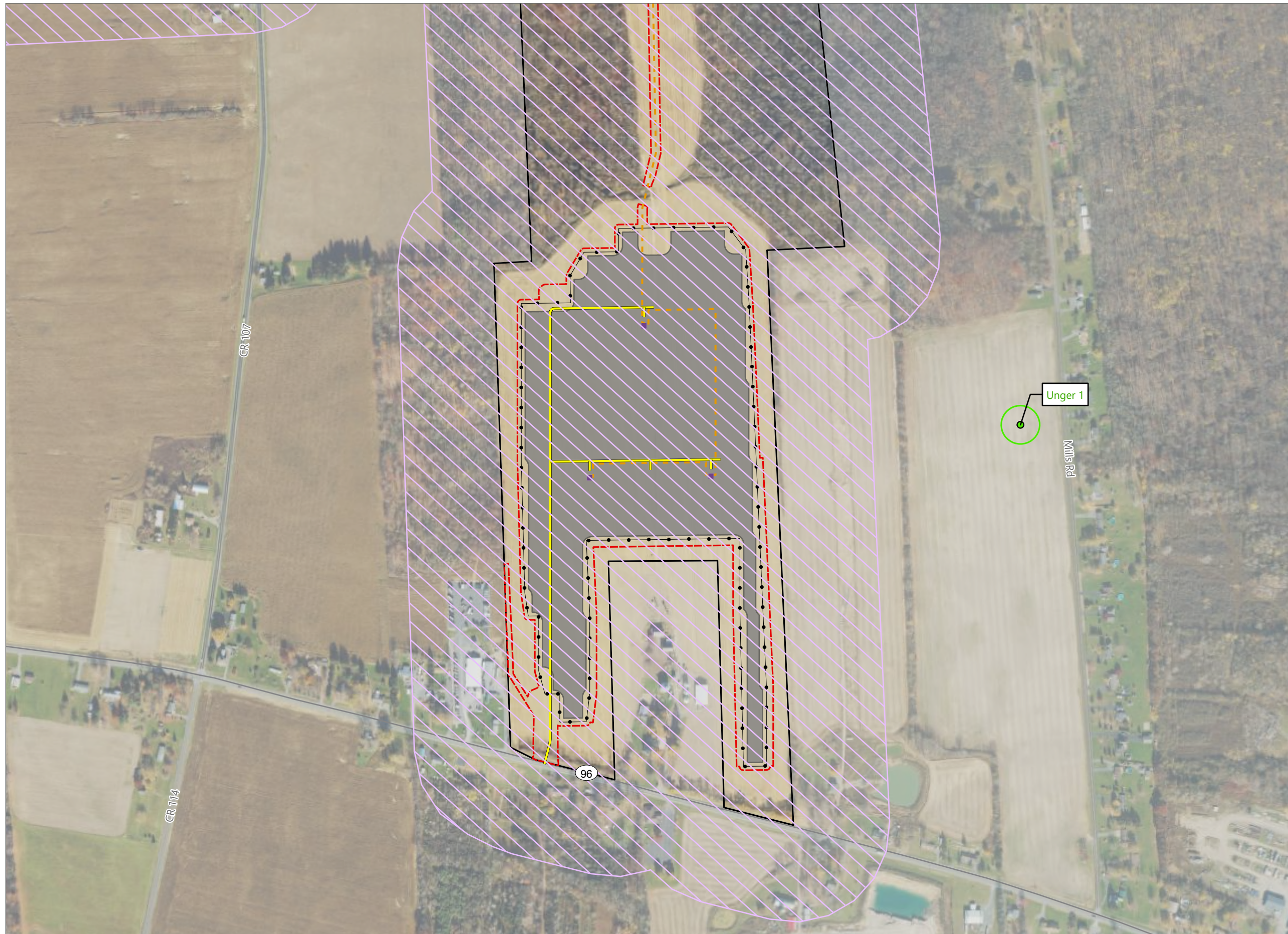
Towns of Waterloo and Junius  
Seneca County, New York

**Article VIII**  
**Application Supplement**  
**Matter No. 23-00036**

- Magnetometer Surveyed Area
- Mapped NYSDEC Oil and Gas Well
- Dry Hole
- Unlisted Well Classification
- 100-ft DEC Gas Well Structure Setback
- Facility Components**
- Access Road
- Collection Line
- PV Panel Array
- Inverter
- Fence Line
- Limit of Construction Activity
- Facility Site















Prepared October 17, 2024  
Basemap: USDA NAIP "2022 New York 60cm" orthoimagery map service

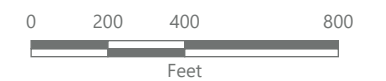
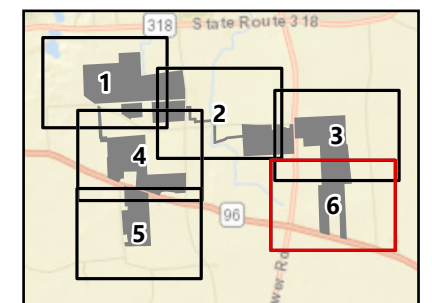


## North Seneca Solar Project

Towns of Waterloo and Junius  
Seneca County, New York

**Article VIII**  
**Application Supplement**  
**Matter No. 23-00036**

-  Magnetometer Surveyed Area
-  Mapped NYSDEC Oil and Gas Well
-  Dry Hole
-  100-ft DEC Gas Well Structure Setback
-  Facility Components
-  Access Road
-  Collection Line
-  PV Panel Array
-  Inverter
-  Fence Line
-  Limit of Construction Activity
-  Facility Site



Prepared October 17, 2024  
Basemap: USDA NAIP "2022 New York 60cm" orthoimagery map service