

Attachment G

Stakeholder Outreach and Responses

1. Introduction

North Seneca Solar Project, LLC. (the Applicant) is proposing to construct and operate the North Seneca Solar Project (the Facility), a solar energy project in the Towns of Junius and Waterloo, Seneca County, New York. The proposed Facility is subject to review under Chapter XVIII, Title 19 of New York Codes, Rules, and Regulations (NYCRR) Part 900 and Section 94-c of the New York State Executive Law (hereafter referred to as Section 94-c). Section 94-c §900-2.9 (4) requires that *"the applicant shall confer with municipal planning representatives, the Office, and where appropriate, OPRHP and/or APA in its selection of important or representative viewpoints."* Pursuant to this requirement, Environmental Design and Research, Landscape Architecture, Engineering and Environmental Services, D.P.C. (EDR), as a representative of the Applicant, has conferred with municipal planning representatives and state agencies to solicit comments and recommendations on visually sensitive resources (VSRs) in the vicinity of the Facility and locations that would be suitable for the development of photosimulations. This attachment includes the visual consultation materials that were provided to stakeholders, responses that were received, and a summary of the actions taken by EDR and the Applicant to include recommendations in the Visual Impact Assessment (VIA; Appendix 8-A of the 94-c Application).

2. Summary of Visual Outreach Efforts

Community Meeting

On September 20, 2023, poster boards depicting the locations of visually sensitive resources identified to date and conceptual photosimulations from State Route 96 and Whiskey Hill Road were presented at a public information meeting held in the Town of Waterloo Community Center. Additional information on this meeting, including sign-in sheets and other materials that were presented, can be found in Appendix 2-C of the 94-c Application. Although several community members were interested in the conceptual photosimulations, no recommendations for additional visually sensitive resources within the study area or locations that would be suitable for photosimulation development were received.

Visual Consultation Letter

On October 12, 2023, a visual consultation letter was sent by EDR to town and county supervisors and historians, state agency representatives, and indigenous nation representatives summarizing the results of the preliminary visual analysis and requesting recommendations on VSRs within the visual study area and locations that would be suitable for the development of photosimulations. The consultation letter included the following attachments:

- **Attachment A** - map figures showing the 2-mile visual study area, Facility components, viewpoints captured during field work, viewpoints recommended for photosimulation development,

photovoltaic (PV) panel digital surface model (DSM) viewshed analysis results, identified VSRs, and landscape similarity zones;

- **Attachment B** – distribution list of all recipients of visual outreach letter;
- **Attachment C** – table of the currently identified VSRs with information on their location and potential visibility of the PV panels;
- **Attachment D** – viewpoint photolog included panorama compositions and single-frame photographs from the 39 viewpoints visited during field work, noting viewpoints that EDR is recommending for photosimulation development.

3. Summary of Responses

Seneca Nation

On October 25, 2023, EDR received a response email from Dr. Joe Stahlman, Director of the Seneca Nation's Seneca-Iroquois National Museum-Onöhsagwë:de' Culture Center, indicating that he did not identify any visually sensitive resources or Native American lands within the visual study area. He recommended reaching out to the Cayuga Nation. Two representatives of the Cayuga Nation, Chief Clint Halftown and Chief Sam George, were included in the distribution of the visual consultation letter that was sent of October 12, 2023, but they did not provide a response.

Office of Renewable Energy Siting

On November 3, 2023, the Office of Renewable Energy Siting (ORES) provided a response that identified several potential visually sensitive resources and/or locations that may be suitable for photosimulation development within the study area. These include the following:

- Seneca River – Seneca River/Cayuga Seneca Canal;
- Quaker Cemetery and other Cemeteries in the Study Area;
- Junius Ponds Cabins & Campgrounds;
- North Seneca Sportsmen's Club;
- Residence on State Route 318, 700 feet east of Grange Hall Road;
- Several waterway access sites along the Cayuga Seneca Canal.

The response also noted that it would be appropriate to include viewpoints from resources eligible for listing on the State and/or National Register Historic Places (S/NRHP) once the historic resources survey report is complete, requested copies of feedback provided by other visual outreach recipients to date, and requested additions or revisions to the map figures or tables in the outreach materials.

On November 20, 2023, EDR responded to request additional information on the appropriate designation and/or resource categories for several of the identified resources along with a copy of the response received from the representative of the Seneca Nation. No resolution to these inquiries was received from ORES.

4. Actions Taken

Based upon a review of the visually sensitive resources identified by ORES and the results of the Historic Resource Survey Report and Effects Assessment (see Appendix 9-D of the 94-c Application), the following resources were added to the VSR database:

- **Dunham Cemetery (VSR ID # 32)** – EDR recommended that this resource meets S/NRHP eligibility criteria. Therefore, this resource was added to the VSR inventory in the “Properties of Historic Significance” category.
- **Hubbard Cemetery (VSR ID # 38)** - EDR recommended that this resource meets S/NRHP eligibility criteria. Therefore, this resource was added to the VSR inventory in the “Properties of Historic Significance” category.
- **Quaker Cemetery (VSR ID # 39)** – EDR recommended that this resource meets S/NRHP eligibility criteria. Therefore, this resource was added to the VSR resource in the Properties of Historic Significance category.
- **Bowdish Cemetery (VSR ID # 41)** – This resource was identified in the Historic Resource Survey Report and Effects Assessment, but it’s eligibility for listing on the S/NRHP is undetermined due to its inaccessibility and lack of visibility from as observed from public vantage points in the vicinity. Therefore, this resource was added to the VSR inventory in the “Resources Identified During Visual Outreach” category.
- **Newton Cemetery (VSR ID # 43)** – This resource was identified in the New York State Department of State Public Cemetery Locations geospatial database and was added to the VSR inventory in the “Resources Identified During Visual Outreach” category.
- **Locust Street Park (VSR ID # 40)** – This small, unnamed park was identified during field review and is located near the intersection of Locust and Water Street in the Village of Waterloo. It appears to be publicly accessible and provides an informal access point to the Cayuga and Seneca Canal. Therefore, this resource was added to the VSR inventory in the “Public Lands and Recreational Resources” category.
- **Junius Ponds and Cabins and Campgrounds (VSR ID # 42)** – This campground is located off State Route 318 in the Town of Junius. Because admission and access to the campground is fee-based and not readily accessible to the public at large, this resource was not categorized in the Public Lands and Recreational Resources category and was added to the VSR inventory in the “Resources Identified During Visual Outreach” category.
- **North Seneca Sportsmen and Rifle Club (VSR ID # 44)** – The sportsmen club and grounds are located off State Route 318 in the Town of Junius. Because admission and access to the club grounds appears to be fee-based and not readily accessible to the public at large, his resource was not categorized in the Public Lands and Recreational Resources category and was added to the VSR inventory in the “Resources Identified During Visual Outreach” category.

The Cayuga-Seneca Canal is located within the boundaries of the Enlarged Erie Canal Barge (VSR ID # 1), a National Historic Landmark. Therefore, it was not delineated as a separate resource. Similarly, a publicly accessible water access point that was identified during field work in Oak Island Park (VSR ID # 18) but was also not delineated as a separate resource. The private residence recommended by ORES on State Route 318 approximately 700 feet east of Grange Hall Road in the Town of Junius was not added to the VSR inventory because it not publicly accessible or designated for the scenic, aesthetic, or historic qualities it may possess. Therefore, it was determined that it does not meet the criteria for visual sensitive resources defined in 94-c regulations or guidance provided by New York State Department of Environmental Conservation (NYSDEC) 2019 Program Policy (DEP-00-2) *Assessing and Mitigating Visual and Aesthetic Impacts*. However, views from the roadway near this residence were considered for the development of photosimulations, as described below.

Following the addition of these resources to the inventory, field review was conducted to capture photography from publicly accessible vantage points within or near the resources from which potential Facility visible is possible. These viewpoints were subsequently assessed to determine if they would be appropriate for the development of photosimulations. As described in Section 4.2.1 of the VIA, the viewpoint selection process considers a number of factors in order to represent the range of visual change that could occur with the Facility place, including viewing distance, viewer exposure, VSRs, and the extent of PV panel visibility and degree of screening in views, amongst others. Based upon the review of all 47 viewpoints documented during field work, photosimulations were developed to represent views from the following locations:

- **Hubbard Cemetery (VSR ID # 38)** – Viewpoint 42
- **Quaker Cemetery (VSR ID # 39)** – Viewpoint 41
- **Bowdish Cemetery (VSR ID # 41)** – Viewpoint 15

The photosimulations were subsequently evaluated by a rating panel to determine the operation Facility's visual contrast with existing elements of the landscape. The rating panel process is described in Section 4.2.3 and the results are summarized in Section 5.2.1 of the VIA. In addition, a wireframe rendering was produced to represent the view from State Route 318 approximately 700 feet east of Grange Hall Road in the Town of Junius (Viewpoint 47). As mentioned previously, this location was recommended for consideration in the viewpoint selection process by ORES. Line-of-sight cross sections were prepared for all VSR that were not selected for photosimulation development (see Attachment E of the VIA). Visibility from these resources is discussed in Section 5.1.4 of the VIA.

Visual Outreach Materials, Responses, and Correspondence

Visual Consultation Letter

October 12, 2023



October 12, 2023

**Municipal Planning, State Agency, and Party List Representatives
Per Attached Distribution List**

RE: North Seneca Solar Project (ORES Matter No. Pending), Towns of Junius and Waterloo, Seneca County, New York
Official Request for Stakeholder Input on Visually Sensitive Resources and Representative Viewpoints

Dear Municipal Planning, State Agency, or Party List Representative:

As you may be aware, North Seneca Solar Project, LLC (the Applicant) is proposing to construct and operate the North Seneca Solar Project (the Project), an up to 90-megawatt (MW) alternating current (AC) solar energy generation facility in the Towns of Junius and Waterloo, Seneca County, New York (hereafter referred to as the Facility; see Attachment A, Figure 1). The proposed Facility is subject to review under Chapter XVIII, Title 19 of New York Codes, Rules, and Regulations (NYCRR) Part 900, §900-2.9 and Section 94-c of the New York State Executive Law (hereafter referred to as Section 94-c). In accordance with Section 94-c regulations, Exhibit 8, Visual Impacts, *"the applicant shall confer with municipal planning representatives, the Office, and where appropriate, OPRHP and/or APA in its selection of important or representative viewpoints."*

Pursuant to Section 94-c requirements, Environmental Design and Research, Landscape Architecture, Engineering and Environmental Services, D.P.C. (EDR) is reaching out to representatives from state agencies and each jurisdiction in the Visual Study Area on behalf of the Applicant to request your assistance in identifying visually sensitive resources, existing and proposed sensitive land-uses, and potential photosimulation locations in the vicinity of the proposed Facility (see Attachment B for a list of all representatives included in this correspondence). This information will help inform the content of a Visual Impact Assessment (VIA) that is being prepared to assess the potential visual effects resulting from the Facility. The information presented in this letter and its attachments are intended to provide you with enough context and information to assist in the identification of visually sensitive resources and candidate photosimulation locations.

List of Attachments

Attachment A: Figures

Figure 1: Visual Study Area and Facility Site

Figure 2: Visual Sensitive Resources and Viewshed

Figure 3: Landscape Similarity Zones

Attachment B: Distribution List

Attachment C: Visually Sensitive Resources Table

Attachment D: Viewpoint Photolog

Definitions of Specific Terms and Acronyms Used in this Letter

Visual Impact Assessment (VIA) is a study evaluating the potential visibility, appearance, and visual impact associated with a proposed project.

Visual Study Area (VSA) is defined as the area within a 2-mile radius of Facility components in accordance with 94-c regulations. The VSA boundary for the Facility is shown on Attachment A, Figure 1.

Viewshed Analysis was performed to identify locations within the VSA where there is potential for the proposed photovoltaic (PV) panels to be seen from ground-level vantage points. This analysis considers the height and location of all surface features, including ground surface topography, existing structures, and existing vegetation. The results of the viewshed analysis are shown in Attachment A, Figure 2.

Distance Zones are defined in visual studies to divide a study area into distance sub-areas based on the various levels of landscape and Facility detail available to the viewers. EDR has defined four preliminary distance zones within the visual study area (as measured from the perimeter of the current PV panels and interconnection facility locations): Near-Foreground (0-300 feet), Foreground (300 feet- 0.5 mile), Middle Ground (0.5 – 4.0 miles), Background (4.0+ miles). Mapped locations of the distance zones are shown in Attachment A, Figure 1.

Landscape Similarity Zones (LSZs) are subsets of the VSA that are defined based on the similarity of various landscape characteristics including topography, vegetation, water, and land use patterns, in accordance with established visual assessment methods. EDR has defined six preliminary LSZs within the visual study area: forest, agriculture/rural residential, commercial, open water, transportation and village. Mapped locations of the LSZs are shown in Attachment A, Figure 3, and a brief description of each LSZ is provided below.

Photosimulations are images of a realistic three dimensional (3D) model of the proposed Facility superimposed on photographs of the existing landscape. The photosimulations accurately illustrate how the proposed Facility would appear upon completion and are used to evaluate the visual contrast of the proposed Facility with the existing visual environment.

Visually Sensitive Resources

Visually Sensitive Resources (VSRs) were identified within the 2-mile VSA in accordance with guidance provided by New York State Department of Environmental Conservation (NYSDEC) Program Policy DEP-00-2 *Assessing and Mitigating Visual and Aesthetic Impacts* (NYSDEC, 2019) and the requirements of Section 94-c. In addition, EDR identified other resources that could be considered visually sensitive based on the type or intensity of use they receive. The category of VSRs identified for this VIA include the following:

- **Properties of Historic Significance** (*National/State Historic Landmarks, Properties/Districts Listed on the National or State Register of Historic Places, Properties Eligible for listing on the National or State Register of Historic Places*)
- **Designated Scenic Resources** (*Rivers Designated as National or State Wild, Scenic or Recreational, Adirondack Park Scenic Vistas, Sites, Areas, Lakes, Reservoirs or Highways Designated or Eligible for Designation as Scenic, Scenic Areas of Statewide Significance, Other Designated Scenic Resources (Easements, Roads, Districts, and Overlooks).*)
- **Public Lands and Recreational Resources** (*National Parks, Recreation Areas, Seashores, and Forests, National Natural Landmarks, National Wildlife Refugees, Heritage Areas, State Parks, State Nature and Historic Preserve Areas, State Forest Preserve, Other State Lands; Wildlife Management Areas and Game Refugees, State Forests, State Fishing/Waterway Access Sites, Trails, State and Federal Trails, Snowmobile/ATV Trails, Bike Trails/Routes, Palisades Park, Local Parks and Recreational Areas, Publicly Accessible Conservation Lands/Easements, Rivers and Streams with Public Fishing Rights Easements, Named Lakes, Ponds and Reservoirs*)
- **High-Use Public Areas** (*US, State and Interstate Highways, Schools, Cities, Villages, Hamlets*)
- **Native American Lands**

Please note that the architectural survey that identifies properties eligible for listing in the National or State Register of Historic Places is ongoing. Therefore, these resources have not been identified at this time. Once the architectural survey is completed, any resources identified as eligible for listing on the National or State Register of Historic Places will be added to the VSR inventory.

Attachment A, Figure 2 illustrates the location of each identified resource and Attachment C provides information about each resource, including its name, distance zone, and the potential visibility of the PV panels based on a preliminary viewshed analysis.

Landscape Similarity Zones

Six discrete LSZs within the VSA were defined based on the similarity of various landscape characteristics, including landform, vegetation, water, and land use patterns. The LSZs are illustrated in Attachment A Figure 3 and a brief description of each LSZ is provided below. The LSZs will be described in greater detail in the VIA.

- **Forest LSZ** is characterized by large, contiguous areas of mixed deciduous and coniferous tree species. Typical views within this LSZ are short range and include substantial foreground screening. Where open views are available, they are often tightly enclosed by trees and other vegetation, such as views along roadway corridors or in small clearings. Views from the edge of the Forest LSZ can be more open, particularly during leaf-off conditions and when adjacent to agricultural land.
- **Agricultural/Rural Residential LSZ** is characterized by open agricultural land mixed with farm complexes, small woodlots, and low-density residential development that is dissected by a network of local roads and state routes. Views available in this LSZ typically feature a relatively level and open foreground of agricultural fields with scattered homes and agricultural structures that are

backed or bordered by forested areas. In some conditions, such as before harvest, views may be very short-range due to screening provided by roadside crops.

- **Village LSZ** is characterized by moderate to high-density residential and commercial development. Buildings and structures are arranged along an organized street pattern that tends to screen outward views and focus views along the main streets. Views within this LSZ are generally short-range and feature commercial buildings or residences and associated yard vegetation backed by trees and other vegetation. However, the edges of the Village LSZ (where there is typically less dense development) and large, open areas (such as sports fields) offer the opportunity for more open, unobstructed views of the surrounding landscape.
- **Commercial LSZ** consists of the Waterloo Premium Outlet Mall, which is characterized by one to three story commercial shops in separate buildings that are arranged along the perimeter of a large parking area. Views within this LSZ are generally short-range and feature paved, parking areas interspersed with planted islands in the foreground backed by retail buildings.
- **Open Water LSZ** consists of broad expanses of water that provide open views of the surrounding landscape. Within the VSA, this LSZ includes prominent lakes and ponds, such as Burnett and Junius Ponds, and the Seneca River. Outward views from boats on the river or pond surface and from points along the shore typically feature open water in the foreground backed by trees and man-made structures.
- **Transportation LSZ** consists of the Interstate 90 corridor, which is characterized as a divided-multi-lane highway with limited access. Typical views are dominated by pavement and moving vehicles in the immediate foreground backed by a mix of forest and agricultural land and low density rural residential houses.

Field Review

EDR personnel conducted field review within the VSA on March 22, 2023, and September 15, 2023. During field review, EDR staff members traveled public roads and visited public vantage points throughout the VSA to confirm the results of the viewshed analysis and obtain photographs to document existing views/visual character for subsequent development of photosimulations. Field review resulted in documentation of 39 representative viewpoints. Photographs for each viewpoint, including a panorama composition illustrating the view context and a single-frame photograph illustrating the most open, unobstructed view available towards the Facility Site, are included within Attachment D (Viewpoint Photolog). The viewpoint locations are illustrated in Attachment A, Figure 1.

Feedback Requests

Visually Sensitive Resources

EDR and the Applicant are formally requesting feedback from you to identify additional VSRs.

Please review the mapped locations of VSRs identified to date in Attachment A, Figure 2 and listed in Attachment C. The Applicant believes the list of the VSRs included herein represents a substantially

complete inventory of the VSRs within the VSA. Please let us know whether there are any additional sites/locations that are visually sensitive and that you believe should be added to the inventory and subsequently evaluated in the VIA. If so, please provide the name, location, and a brief description for each resource.

Proposed Land Use

EDR and the Applicant are requesting feedback from you in the identification of any proposed land uses that may be sensitive to visual impact.

Pursuant to Section 94-c requirements, "proposed land uses" are required to be considered as part of the viewpoint selection process. Publicly available zoning codes, comprehensive plans, and local laws for each town within the VSA will be reviewed to identify current and future land uses within the VSA. However, the Applicant anticipates instances in which a municipality is in process of completing updates to existing zoning codes, comprehensive plans, or local laws. In addition, it is recognized that projects/developments may be pending or currently under review by town boards, planning boards, or the zoning board of appeals. Please provide information outlining amendments to local codes or laws and/or information regarding proposed projects and/or land uses that should be considered in the VIA.

Photosimulation Locations

EDR and the Applicant are requesting feedback from you in the selection of viewpoints for the production of photosimulations.

As mentioned previously, a full viewpoint photolog including a representative photograph from each of the visited sites can be found in Attachment D, and viewpoint locations are illustrated in Attachment A, Figure 1. The Applicant anticipates preparing representative photosimulations to illustrate the appearance of the proposed Facility from various distances within a range of visual settings. The Applicant is considering the following nine viewpoints for the production of photosimulations:

Viewpoint	Location, Coordinates	Municipality	Reason for Recommendation
5	State Route 318 42.95443, -76.89603	Town of Junius	Representative of one of the few relatively open, unobstructed views that are anticipated to be available from the middle ground distance zone. This viewpoint is from one of the major roads in the VSA and therefore is expected to have a high degree of viewer exposure.
7	Mill Road 42.94473, -76.88693	Town of Junius	Representative view from the foreground distance zone and Agricultural/Rural Residential LSZ. It is anticipated that Facility visibility will be concentrated to this distance zone and LSZ.
10	Mill Road 42.92403, -76.88519	Town of Waterloo	Representative view from the foreground distance zone and Agricultural/Rural Residential LSZ. This viewpoint is from an area with a relatively high density of residential development within this LSZ.

Viewpoint	Location, Coordinates	Municipality	Reason for Recommendation
13	State Route 96 42.92334, -76.89658	Town of Waterloo	Representative view from the foreground distance zone and Agricultural/Rural Residential LSZ. This viewpoint is from one of the major roads in the VSA and is expected to have a high degree of viewer exposure.
15	State Route 95 and Hidden Spring Lane 42.92874, -76.92889	Town of Waterloo	Representative view from the foreground distance zone and Agricultural/Rural Residential LSZ. This viewpoint is from one of the major roads in the VSA and is expected to have a high degree of viewer exposure.
25	Ninefoot Road 42.94215, -76.92339	Town of Waterloo	Representative of the most open, unobstructed views of anticipated to be available of the proposed substations.
26	Ninefoot Road 42.94606, -76.92374	Town of Junius	Representative view from the foreground distance zone and Agricultural/Rural Residential LSZ. It is anticipated that Facility visibility will be concentrated to this distance zone and LSZ.
35	Whiskey Hill Road and Dunham Road 42.93956, -76.90174	Town of Waterloo	Representative view from the foreground distance zone and Agricultural/Rural Residential LSZ. It is anticipated that Facility visibility will be concentrated to this distance zone and LSZ.
36A	Whiskey Hill Road 42.93776, -76.90161	Town of Waterloo	Representative of views from the near-foreground distance zone and Agricultural/Rural Residential LSZ.

Please review the recommended viewpoints and provide feedback regarding whether these viewpoints are appropriate, or if there are any additional locations that you would like to be considered as candidate viewpoints for photosimulation development.

In order to provide sufficient time to incorporate your feedback into the Visual Impact Assessment, we request that any responses by November 10, 2023.

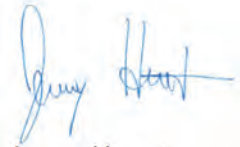
October 12, 2023

All future correspondence regarding the VIA for the Facility will be by email, unless otherwise specified. Please confirm your email address from the distribution list or, if missing, please provide your email address in your response to this letter. Please direct any future correspondence specific to the visual assessment, visual resources, and photosimulations, including responses to this request, to the contact below. If you would like to meet to discuss the information presented in this letter, please send a request to the contact below. Please note email responses in excess of 15 megabytes will not be received. If you do not receive confirmation of email receipt, please call 315.471.0688 extension 684 and leave a voicemail for Jessey Horvat.

- Via email to: jhorvat@edrdpc.com
- Via written letter to:
Attn: Jessey Horvat
Environmental Design & Research
Suite 700
217 Montgomery Street
Syracuse, NY 13202

Thank you in advance for your participation in this process.

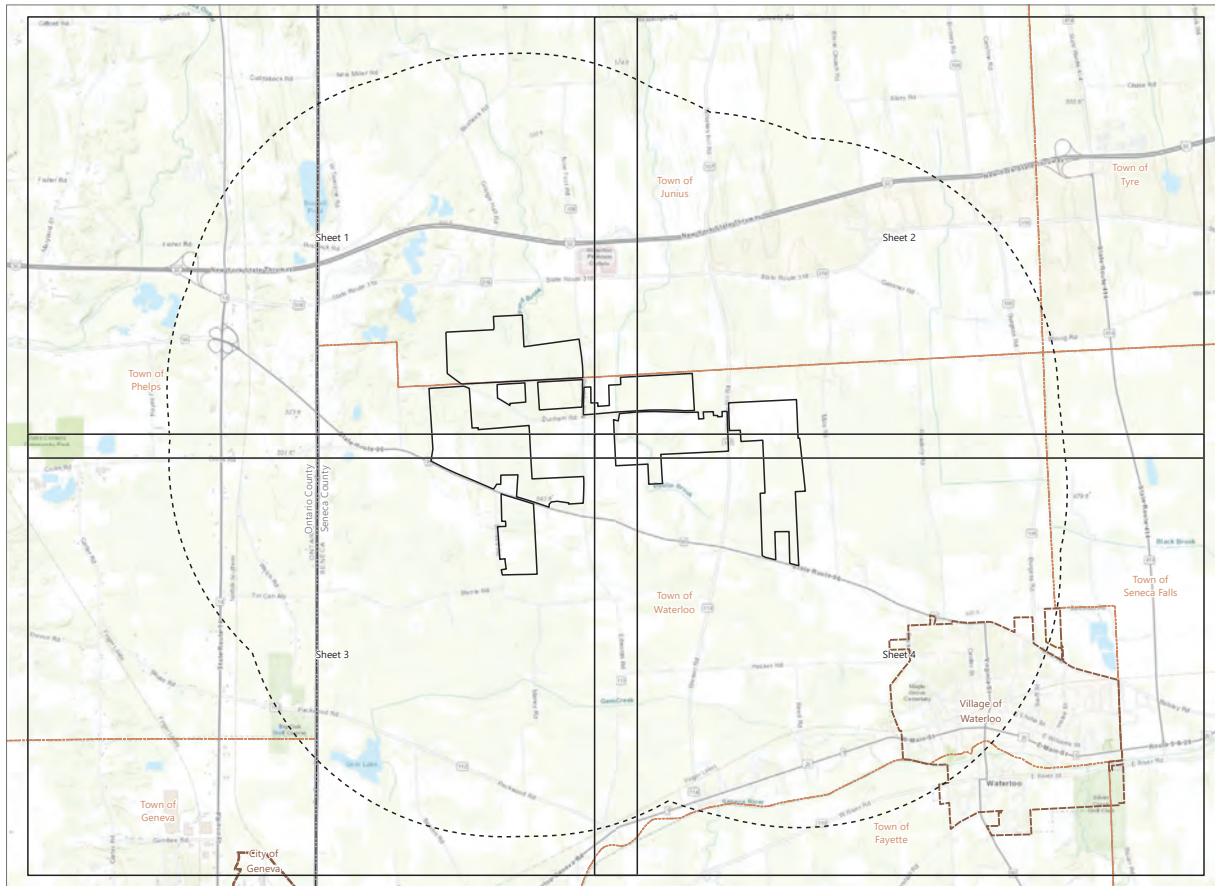
Sincerely,



Jessey Horvat

Visualization Project Manager

Attachment A: Figures

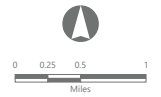


North Seneca Solar Project

Towns of Waterloo and Junius
Seneca County, New York

**Visual Impact Assessment
Public Outreach Letter**

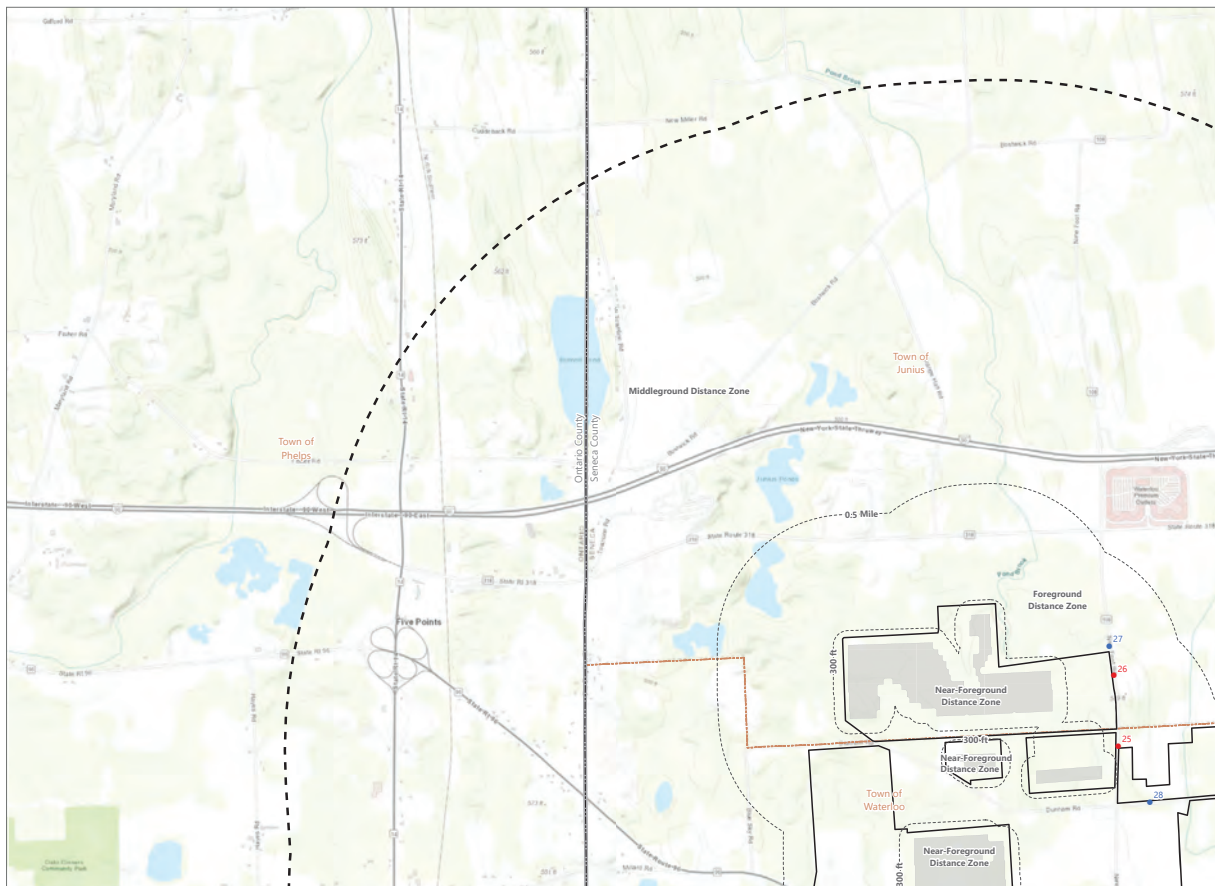
- 2-Mile Visual Study Area
- Facility Site



Prepared October 4, 2023
Brazmap: En "World Topographic Map" map service

EDR

Figure 1. Visual Study Area and Facility Site

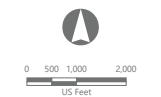
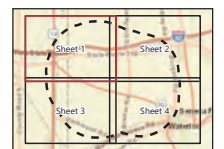


North Seneca Solar Project

Towns of Waterloo and Junius
Seneca County, New York

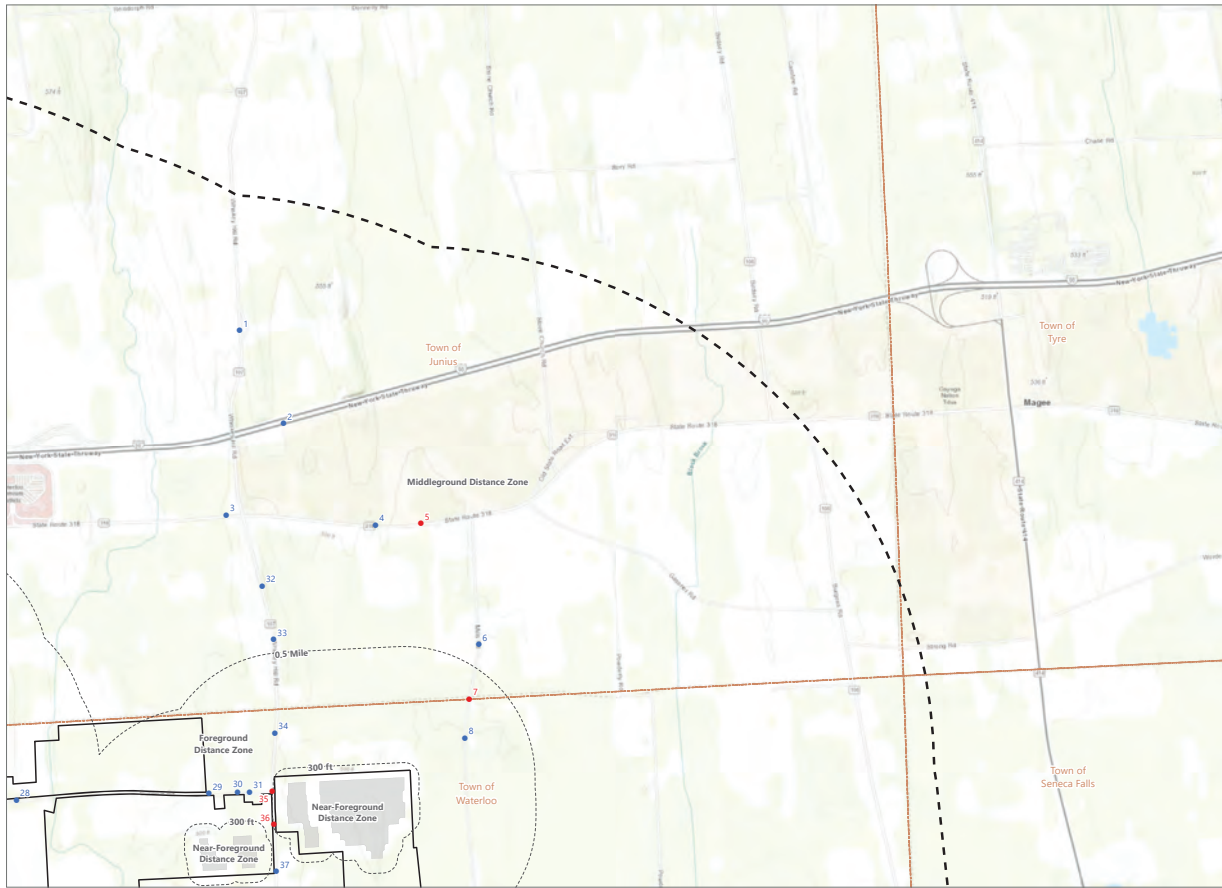
**Visual Impact Assessment
Public Outreach Letter**

- Viewpoint Location
- Recommended Viewpoint
- 2-Mile Visual Study Area
- Distance Zone
- Facility Site
- PV Array



Prepared October 10, 2023
Brazmap: En "World Topographic Map" map service

EDR



North Seneca Solar Project

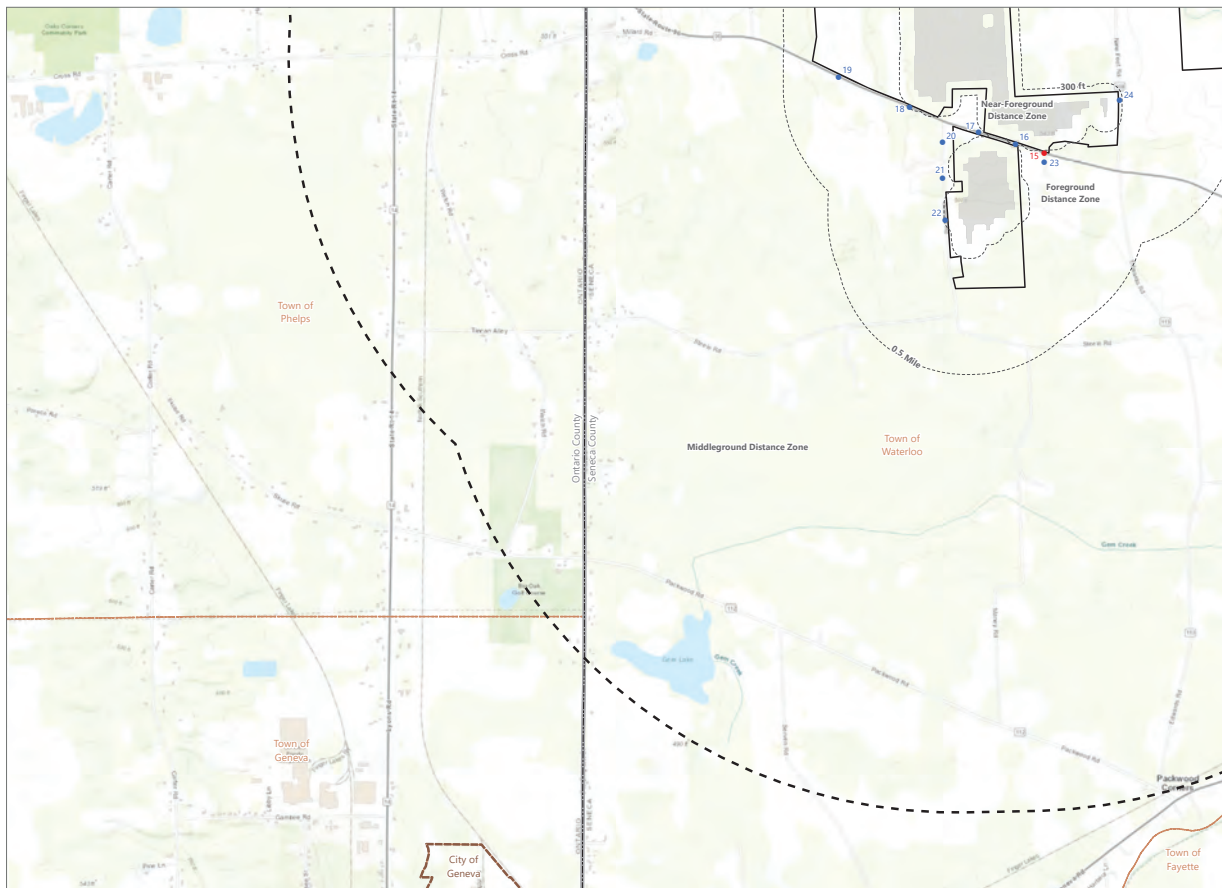
Towns of Waterloo and Junius
Seneca County, New York

**Visual Impact Assessment
Public Outreach Letter**

- Viewpoint Location
- Recommended Viewpoint
- Viewpoint Location
- 2-Mile Visual Study Area
- Distance Zone
- Facility Site
- PV Array



Prepared October 10, 2023
Brazmap: En "World Topographic Map" map service



North Seneca Solar Project

Towns of Waterloo and Junius
Seneca County, New York

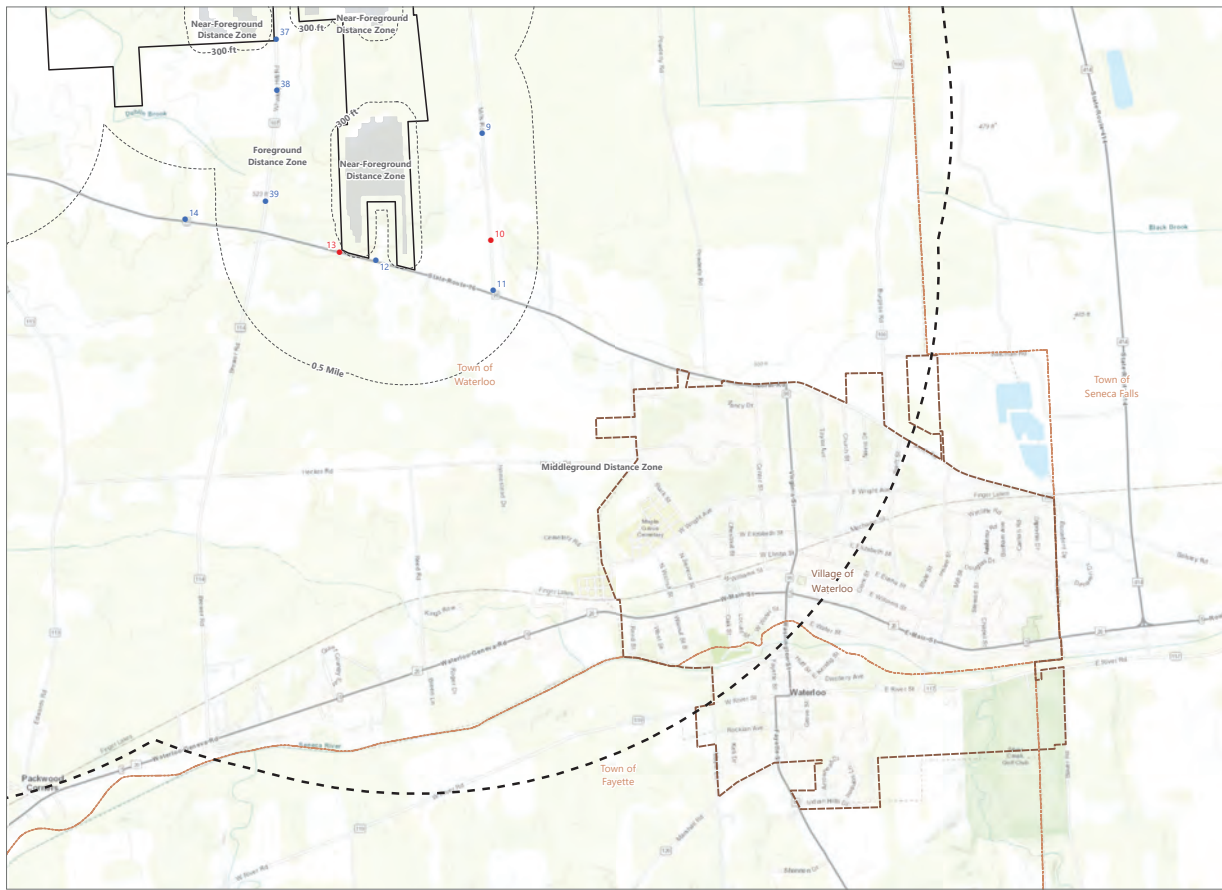
**Visual Impact Assessment
Public Outreach Letter**

- Viewpoint Location
- Recommended Viewpoint
- Viewpoint Location
- 2-Mile Visual Study Area
- Distance Zone
- Facility Site
- PV Array



Prepared October 10, 2023
Brazmap: En "World Topographic Map" map service

Figure 1. Visual Study Area and Facility Site



North Seneca Solar Project

Towns of Waterloo and Junius
Seneca County, New York

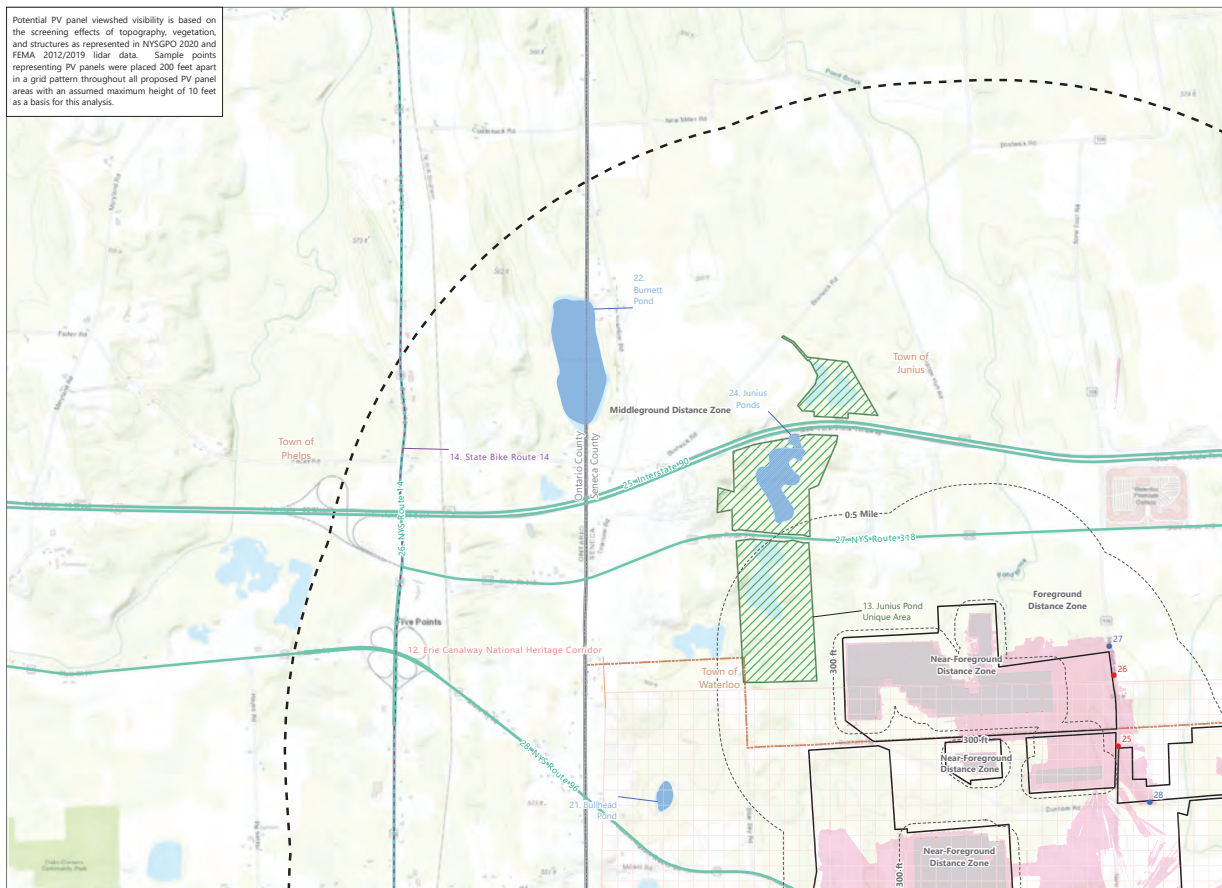
**Visual Impact Assessment
Public Outreach Letter**

- Viewpoint Location
- Recommended Viewpoint
- Viewpoint Location
- 2-Mile Visual Study Area
- Distance Zone
- Facility Site
- PV Array



Prepared October 10, 2023
Brazmap: En "World Topographic Map" map service

Figure 2. Visually Sensitive Resources and Viewshed Results



Potential PV panel viewshed visibility is based on the screening effects of topography, vegetation, and structures as represented in NYSPO 2020 and FEMA 2012/2019 lidar data. Sample points representing PV panels were placed 200 feet apart in a grid pattern throughout all proposed PV array areas with an assumed maximum height of 10 feet as a basis for this analysis.

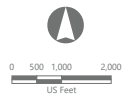
North Seneca Solar Project

Towns of Waterloo and Junius
Seneca County, New York

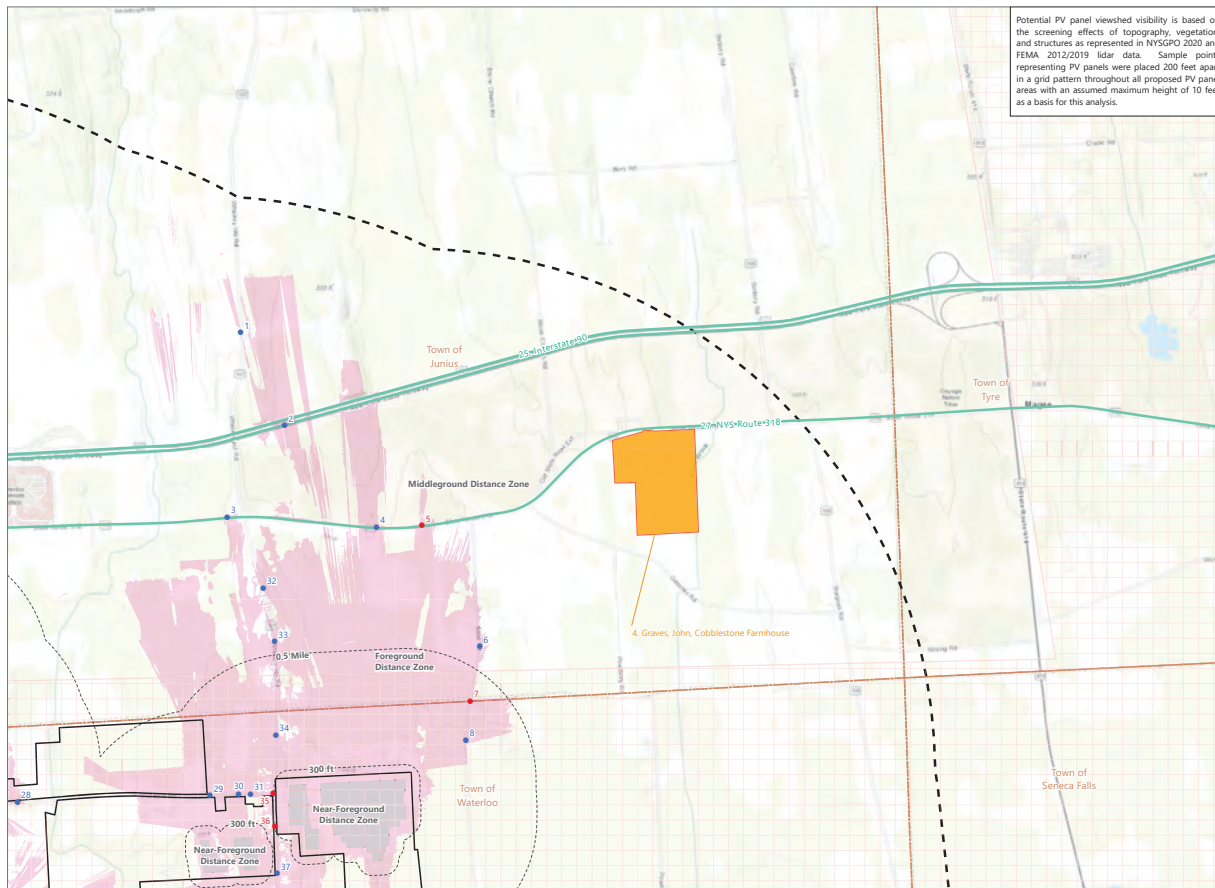
**Visual Impact Assessment
Public Outreach Letter**

- Viewpoint Location
- Recommended Viewpoint
- Viewpoint Location
- 2-Mile Visual Study Area
- Distance Zone
- Facility Site
- PV Array
- PV Panel DSM Viewshed Visibility

- Visually Sensitive Resources**
- Bike Trail Route
 - State/US/Interstate Highway
 - Heritage Area
 - Named Lake Pond and Reservoir
 - Other State Land



Prepared October 10, 2023
Brazmap: En "World Topographic Map" map service

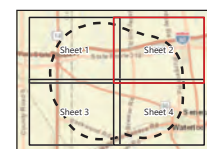


North Seneca Solar Project

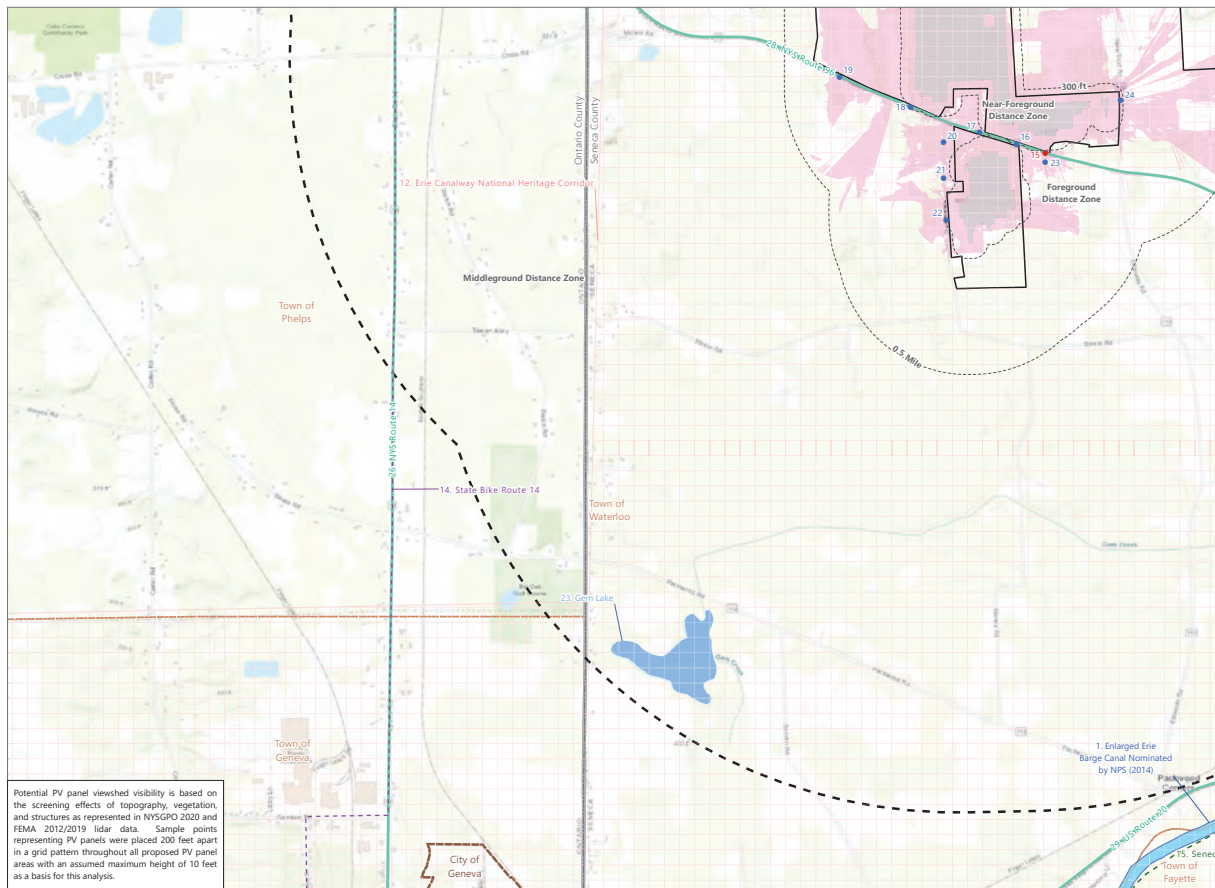
Towns of Waterloo and Junius
Seneca County, New York

**Visual Impact Assessment
Public Outreach Letter**

- Viewpoint Location
 - Recommended Viewpoint
 - Viewpoint Location
 - 2-Mile Visual Study Area
 - Distance Zone
 - Facility Site
 - PV Array
 - PV Panel DSM Viewshed Visibility
- Visually Sensitive Resources**
- State/US/Interstate Highway
 - Heritage Area
 - NRHP-Listed Resource



Prepared October 10, 2023
Brazmap: Eni "World Topographic Map" map service

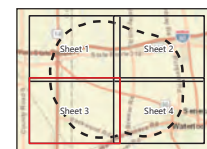


North Seneca Solar Project

Towns of Waterloo and Junius
Seneca County, New York

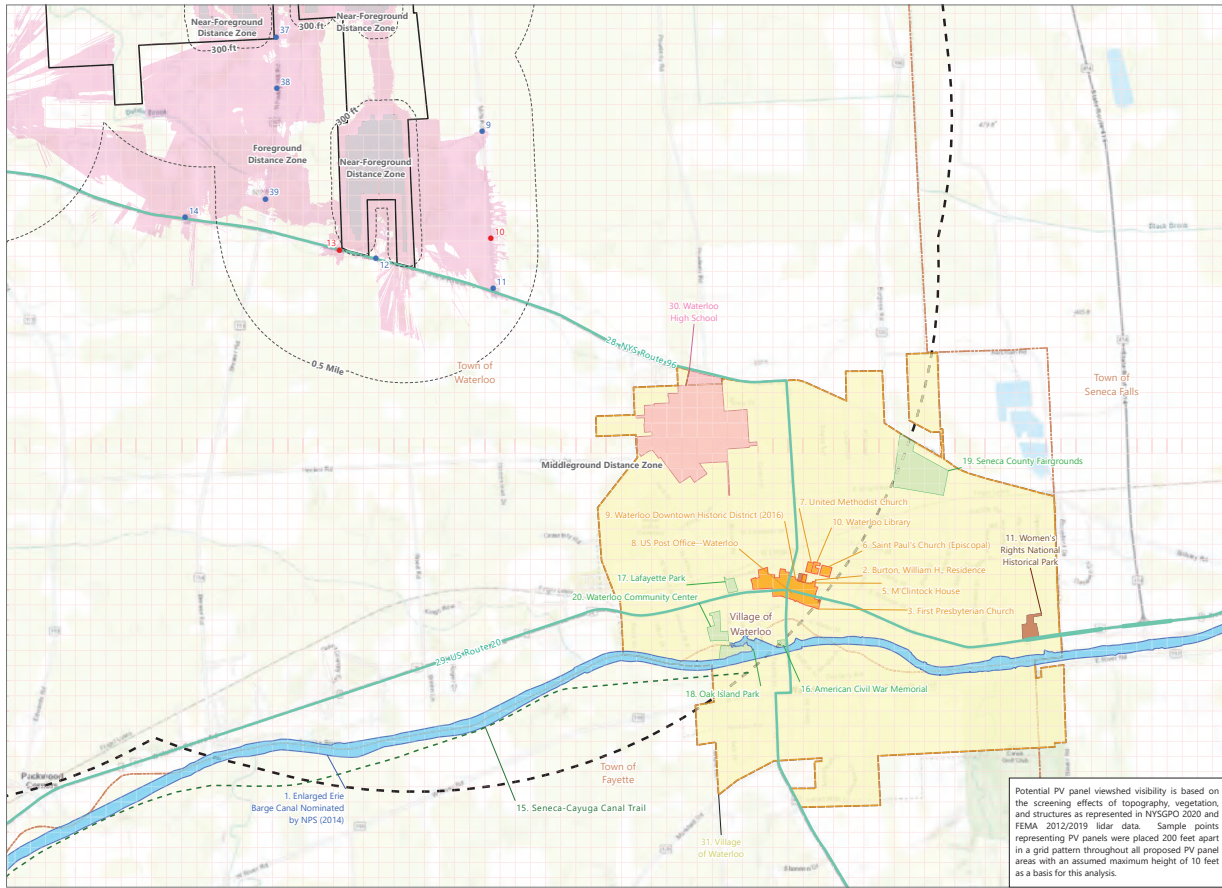
**Visual Impact Assessment
Public Outreach Letter**

- Viewpoint Location
 - Recommended Viewpoint
 - Viewpoint Location
 - 2-Mile Visual Study Area
 - Distance Zone
 - Facility Site
 - PV Array
 - PV Panel DSM Viewshed Visibility
- Visually Sensitive Resources**
- Trail
 - Bike Trail Route
 - State/US/Interstate Highway
 - Heritage Area
 - Named Lake Pond and Reservoir
 - National State Historic Landmark



Prepared October 10, 2023
Brazmap: Eni "World Topographic Map" map service

Figure 2. Visually Sensitive Resources and Viewshed Results



North Seneca Solar Project
Towns of Waterloo and Junius
Seneca County, New York

Visual Impact Assessment
Public Outreach Letter

Viewpoint Location

- Recommended Viewpoint
- Viewpoint Location

2-Mile Visual Study Area

- Distance Zone
- Facility Site
- PV Array
- PV Panel DSM Viewshed Visibility

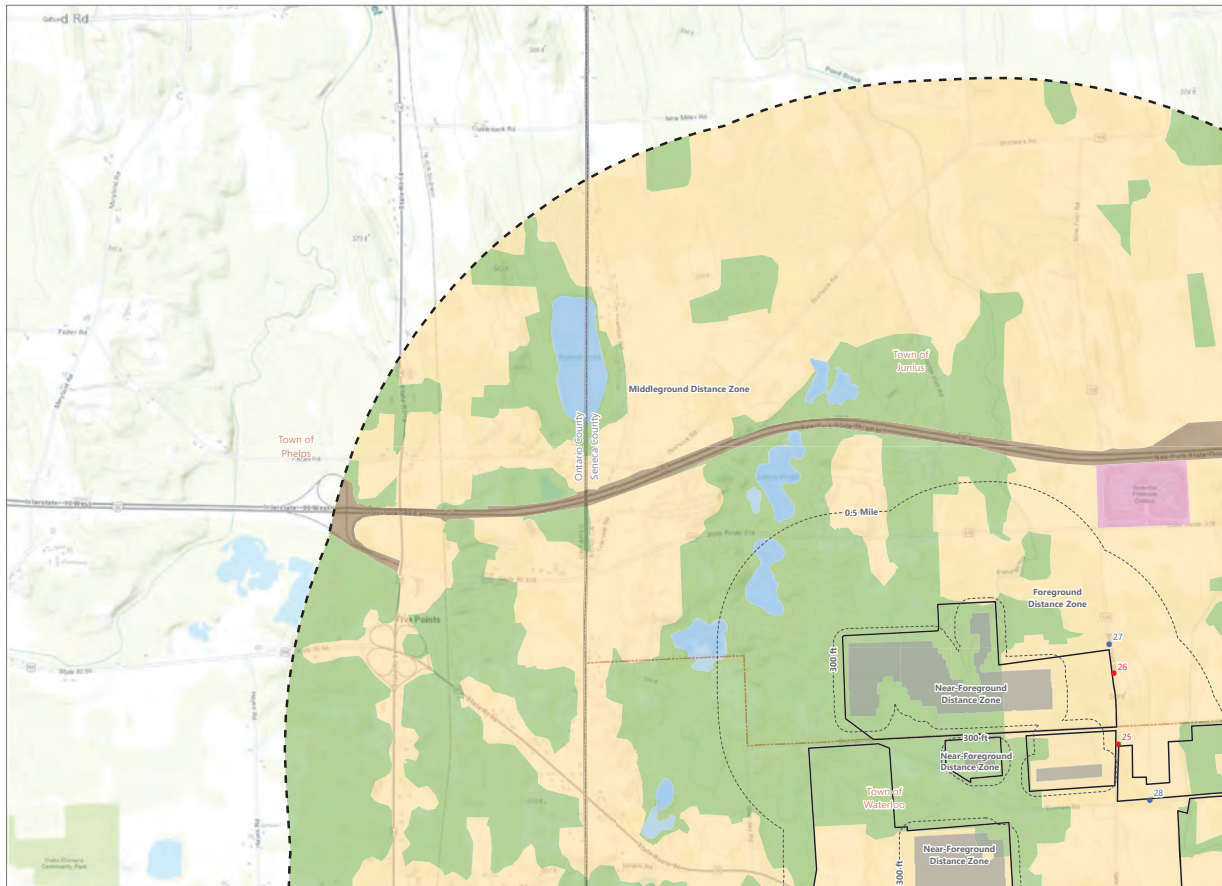
Visually Sensitive Resources

- Trail
- State/US/Interstate Highway
- Heritage Area
- Local Park/Recreation Area
- National Park Recreation Area Seashore and Forest
- National State Historic Landmark
- NRHP-Listed Resource
- School
- Village

Prepared October 10, 2023
Bismarri: En "World Topographic Map" map service

EDR

Figure 3. Landscape Similarity Zones



North Seneca Solar Project
Towns of Waterloo and Junius
Seneca County, New York

Visual Impact Assessment
Public Outreach Letter

Viewpoint Location

- Recommended Viewpoint
- Viewpoint Location

2-Mile Visual Study Area

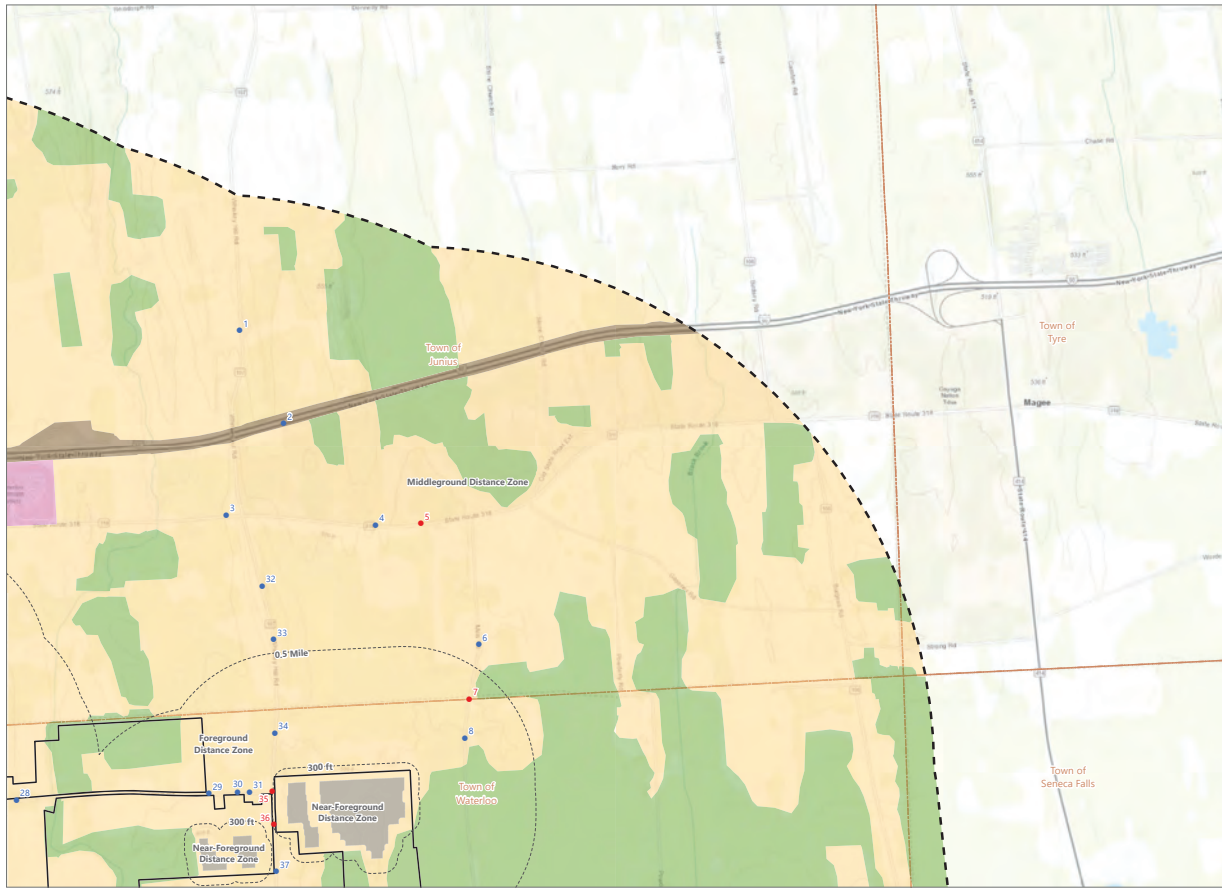
- Distance Zone
- Facility Site
- PV Array
- PV Panel DSM Viewshed Visibility

Landscape Similarity Zone

- Agricultural/Rural Residential
- Commercial
- Forest
- Open Water
- Transportation

Prepared October 10, 2023
Bismarri: En "World Topographic Map" map service

EDR



North Seneca Solar Project

Towns of Waterloo and Junius
Seneca County, New York

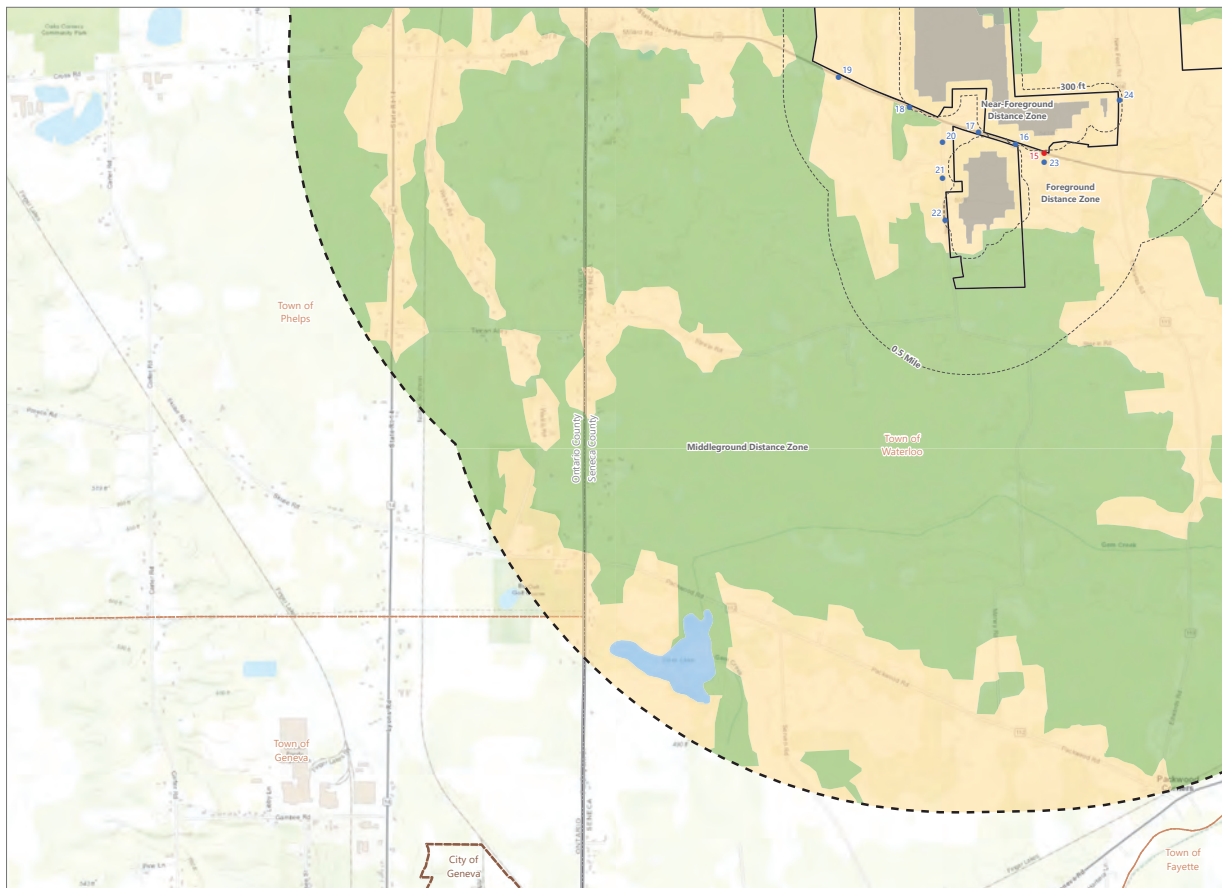
**Visual Impact Assessment
Public Outreach Letter**

- Viewpoint Location
 - Recommended Viewpoint
 - Viewpoint Location
- 2-Mile Visual Study Area
- Distance Zone
- Facility Site
- PV Array
- Landscape Similarity Zone**
 - Agricultural/Rural Residential
 - Commercial
 - Forest
 - Transportation
 - Village



Prepared October 10, 2023
Bismapi: Eni "World Topographic Map" map service

EDR

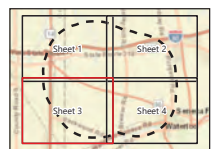


North Seneca Solar Project

Towns of Waterloo and Junius
Seneca County, New York

**Visual Impact Assessment
Public Outreach Letter**

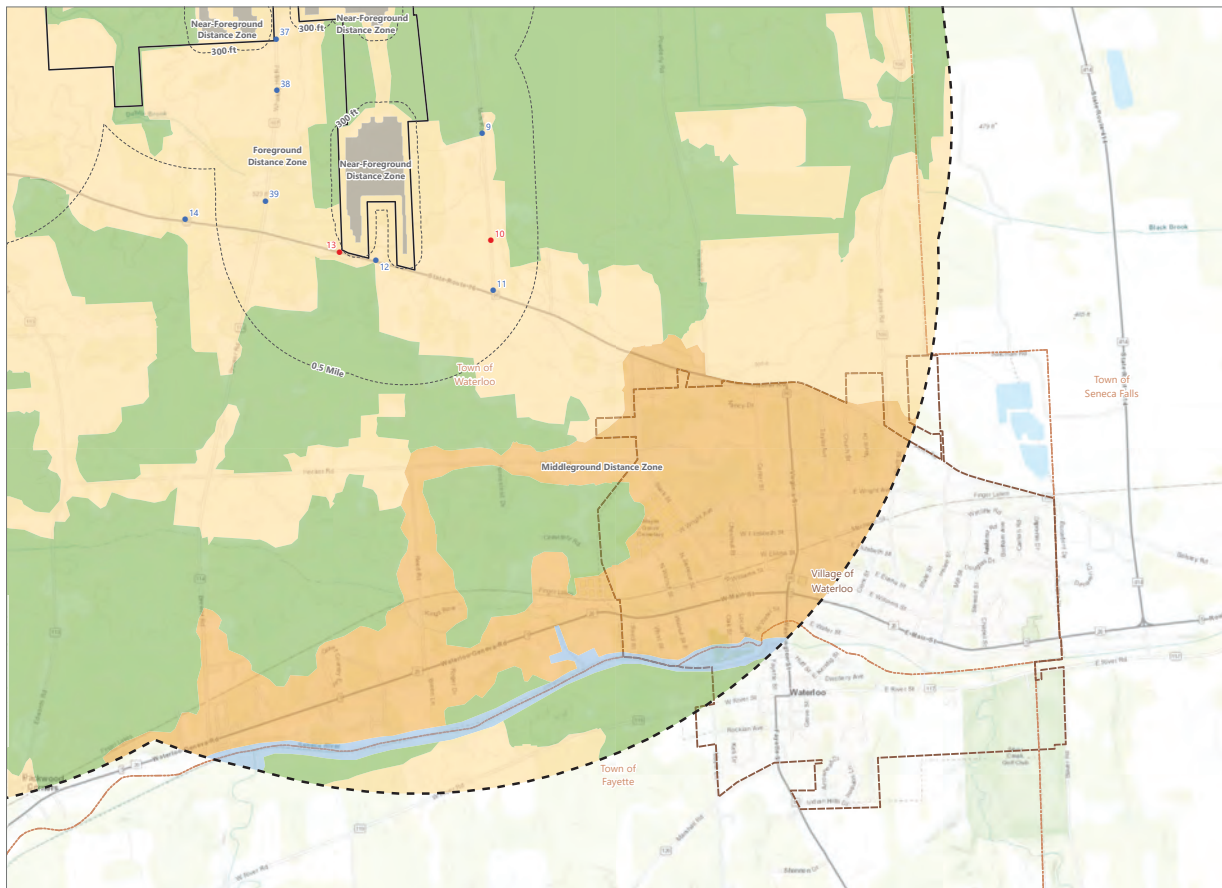
- Viewpoint Location
 - Recommended Viewpoint
 - Viewpoint Location
- 2-Mile Visual Study Area
- Distance Zone
- Facility Site
- PV Array
- Landscape Similarity Zone**
 - Agricultural/Rural Residential
 - Forest
 - Open Water



Prepared October 10, 2023
Bismapi: Eni "World Topographic Map" map service

EDR

Figure 3. Landscape Similarity Zones

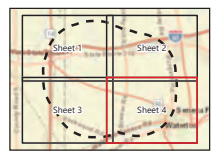


North Seneca Solar Project

Towns of Waterloo and Junius
Seneca County, New York

Visual Impact Assessment Public Outreach Letter

- Viewpoint Location
 - Recommended Viewpoint
 - Viewpoint Location
- 2-Mile Visual Study Area
- Distance Zone
- Facility Site
- PV Array
- Landscape Similarity Zone
 - Agricultural/Rural Residential
 - Forest
 - Open Water
 - Village



Prepared October 10, 2023
Basemap: Esri "World Topographic Map" map service

Attachment B: Distribution List

Attachment B: Distribution List

Representative	Mailing Address One	Mailing Address Two	City	State	Zip	Email Address
Town and Local Representatives						
C. Ernest Brownell, Supervisor	Town of Junius	655 Dublin Rd.	Clyde	NY	14433	erniebrownell@gmail.com
Colleen Smith, Town Clerk	Town of Junius	655 Dublin Rd.	Clyde	NY	14434	csmithjuniusclerk@gmail.com
Deb Patsos, Town Historian	Junius Town Historian	214 St. Rt. 414	Waterloo	NY	13165	dpatsos214@gmail.com
Don Trout, Town Supervisor	Town of Waterloo	66 Virginia St.	Waterloo	NY	13165	d-trout@live.com
Rosemarie Marsh, Town Clerk	Town of Waterloo	66 Virginia St.	Waterloo	NY	13165	rmarsh@townofwaterloo.org
Jim Cleere, Town Assessor/Code/Zoning	Town of Waterloo	66 Virginia St.	Waterloo	NY	13165	jcleere@townofwaterloo.org
Sandra L. Riley	Town of Waterloo	66 Virginia St.	Waterloo	NY	13165	sridley@townofwaterloo.org
Cyndi Park-Sheils	Waterloo Historical Society & Library	31 E. Williams Street	Waterloo	NY	13165	waterloolin@gmail.com
Jeff Trout, Supervisor	Town of Fayette	1439 Yellow Tavern Rd.	Waterloo	NY	13165	jhtrout@gmail.com
Macy Nesbit, Town Clerk	Town of Fayette	1439 Yellow Tavern Rd.	Waterloo	NY	13165	townclerk@townoffayetteny.org
Charles Kelsey, Chairman, Planning Board	Town of Fayette	3449 Parker Road	Seneca Falls	NY	13148	kelseyconstruction@yahoo.com
Robert Steele, Land Use Officer	Town of Fayette	1439 Yellow Tavern Rd.	Waterloo	NY	13165	Rsteele0932@yahoo.com
Emily Sisson	Fayette Historical Society	3681 State Route 414	Seneca Falls	NY	13148	emilie895@yahoo.com
Mark Venuti, Supervisor	Town of Geneva	3750 County Road 6	Geneva	NY	14456	supervisor@townofgeneva.com
Lorrie S. Naegele, Town Clerk	Town of Geneva	3750 County Road 6	Geneva	NY	14456	townclerk@townofgeneva.com
Floyd Kofahl, Code Enforcement Officer	Town of Geneva	3750 County Road 6	Geneva	NY	14456	codeenforcement1@townofgeneva.com
Norm Teed, Supervisor	Town of Phelps	1331 NYS Route 88	Phelps	NY	14532	super@phelpsny.com

North Seneca Solar Project

Towns of Junius and Waterloo, Seneca County, New York
Visual Outreach

Attachment B: Distribution List

Linda Nieskes, Town Clerk	Town of Phelps	1331 NYS Route 88	Phelps	NY	14532	lclerk@phelpsny.com
Steve Studley, Zoning/Planning Board	Town of Phelps	1331 NYS Route 88	Phelps	NY	14532	tzoning@phelpsny.com
Sarah Riegel, Phelps Town Historian	Phelps Community Historical Society Office and Museum	66 Main St.	Phelps	NY	14532	histsoc2@gmail.com
Michael J. Ferrara, Supervisor	Town of Seneca Falls	130 Ovid Street	Seneca Falls	NY	13148	mferrara@co.seneca.ny.us
Nicaletta Greer, Town Clerk	Town of Seneca Falls	130 Ovid Street	Seneca Falls	NY	13148	ngreer@senecafalls.com
Peter Porcelli, Code Enforcement Officer	Town of Seneca Falls	130 Ovid Street	Seneca Falls	NY	13148	pporcelli@senecafalls.com
Frances Barbieri, Seneca Falls Historian	Town of Seneca Falls	2895 Garden Street Ext.	Seneca Falls	NY	13148	ftbarbieri@hotmail.com
Seneca Falls Historical Society	Seneca Falls Historical Society	55 Cayuga Street	Seneca Falls	NY	13148	sfhs@rochester.rr.com
Elizabeth Partee, Supervisor	Town of Tyre	1082 Gravel Rd.	Seneca Falls	NY	13148	supervisor@tyreny.com
Carolyn Sosnowski, Town Clerk	Town of Tyre	1082 Gravel Rd.	Seneca Falls	NY	13148	townclerk@tyreny.com
Ann Marie Heizmann, Zoning Enforcement Officer	Town of Tyre	1082 Gravel Rd.	Seneca Falls	NY	13148	zoningofficer@tyreny.com
Kathy Jans-Duffy, Town of Tyre Historian	Town of Tyre	1315 Middle Black Brook Road	Seneca Falls	NY	13148	kjansduffy@gmail.com
Don Northrup, Village Clerk	Village of Waterloo	41 West Main Street	Waterloo	NY	13165	villageoffice@waterloony.com
Lee Marquart, Code Enforcement Officer	Village of Waterloo	41 West Main Street	Waterloo	NY	13165	waterloocodes@waterlooopd.com
County Representatives						
Kyle Lovell, County Manager	Seneca County	1 DiPronio Drive	Waterloo	NY	13165	klovell@seneca.ny.us
Jill Henry, Planning Board Director	Seneca County Planning and Community Development Department	1 DiPronio Drive	Waterloo	NY	13165	jhenry@co.seneca.ny.us
Walter Gable, County Historian	Seneca County Historian's Office	1 DiPronio Drive	Waterloo	NY	13165	wgable@co.seneca.ny.us

North Seneca Solar Project

Towns of Junius and Waterloo, Seneca County, New York
Visual Outreach

Attachment B: Distribution List

Sheet 3

State Agency Representatives						
Houtan Moaveni, Executive Director	Office of Renewable Energy Siting	Empire State Plaza, Swan Street – Core 1, Room #110-119	Albany	NY	12239	Houtan.Moaveni@ores.ny.gov
Kristy Primeau, Renewable Energy Siting Specialist 3	Office of Renewable Energy Siting	W.A. Harriman Campus Building 9, 1220 Washington Avenue	Albany	NY	12226	kristy.primeau@ores.ny.gov
Thaddeus Kolankowski, RLA, Renewable Energy Siting Specialist 2	Office of Renewable Energy Siting	W.A. Harriman Campus Building 9, 1220 Washington Avenue	Albany	NY	12226	thaddeus.kolankowski@ores.ny.gov
Fred Bonn, Regional Director	NYS Office of Parks, Recreation and Historic Preservation, Region 4 - Finger Lakes	2221 Taughanock Road	Trumansburg	NY	14886	fred.bonn@parks.ny.gov
Office of Parks, Recreation and Historic Preservation	Submitted through the Cultural Resource Information System					
Indigenous Nation Representatives						
Chief Clint Halftown	Cayuga Nation	P.O. Box 803	Seneca Falls	NY	13148	clint.halftown@gmail.com
Chief Sam George	Cayuga Nation	P.O. Box 433	Union Springs	NY	13160	sevenclansam@gmail.com
Dr. Joe Stahlman, Director - Tribal Historic Preservation Officer Seneca Nation of Indiana	Seneca-Iroquois National Museum Onóhsagwé: De' Cultural Center	82 West Hetzel Street	Salamanca	NY	14779	joe.stahlman@sni.org
Chief Roger Hill and Ms. Christine Abrams	Tonawanda Seneca Nation	Tonawanda Seneca Nation	Basom	NY	14013	tonseneca@aql.com

North Seneca Solar Project

Towns of Junius and Waterloo, Seneca County, New York

Visual Outreach

Attachment C: Visually Sensitive Resource Table

Visually Sensitive Resource	Resource Number	Location		Representative Viewpoint Number(s) ¹	Distance Zone ²	PV Panel Visibility (DSM viewshed results)	
		Municipality	County			Visible (+)	Not Visible (-)
Properties of Historic Significance [6 NYCRR 617.4 (b)(9)]							
National/State Historic Landmarks							
Enlarged Erie Barge Canal Nominated by NPS (2014)	1	Towns of Fayette, Seneca Falls, Tyre, and Waterloo	Seneca		Middle ground		-
Properties/Districts Listed on National or State Registers of Historic Places (NRHP/SRHP)							
Burton, William H., Residence	2	Town of Waterloo	Seneca		Middle ground		-
First Presbyterian Church	3	Town of Waterloo	Seneca		Middle ground		-
Graves, John, Cobblestone Farmhouse	4	Town of Junius	Seneca		Middle ground		-
M'Clintock House	5	Town of Waterloo	Seneca		Middle ground		-
Saint Paul's Church (Episcopal)	6	Town of Waterloo	Seneca		Middle ground		-
United Methodist Church	7	Town of Waterloo	Seneca		Middle ground		-
US Post Office--Waterloo	8	Town of Waterloo	Seneca		Middle ground		-
Waterloo Downtown Historic District (2016)	9	Town of Waterloo	Seneca		Middle ground		-
Waterloo Library	10	Town of Waterloo	Seneca		Middle ground		-
Properties Eligible for Listing on National or State Registers of Historic Places							
Not identified at this time.							
Designated Scenic Resources							
Rivers Designated as National or State Wild, Scenic or Recreational							
None identified							
Adirondack Park Scenic Vistas [Adirondack Park Land Use and Development Map]							
None identified							
Sites, Areas, Lakes, Reservoirs or Highways Designated or Eligible for Designation as Scenic (ECL Article 49 Title 1) or equivalent)							
None identified							
Scenic Areas of Statewide Significance [Article 42 of Executive Law]							
None identified							
Other Designated Scenic Resources (Easements, Roads, Districts, and Overlooks)							
None identified							
Public Lands and Recreational Resources							
National Parks, Recreation Areas, Seashores, and Forests [16 U.S.C. 1c]							
Women's Rights National Historical Park	11	Towns of Seneca Falls and Waterloo	Seneca		Middle ground		-
National Natural Landmarks [36 CFR Part 62]							
None identified							

North Seneca Solar Project

Towns of Junius and Waterloo, Seneca County, New York
Visual Outreach

Attachment C: Visually Sensitive Resource Table

Visually Sensitive Resource	Resource Number	Location		Representative Viewpoint Number(s) ¹	Distance Zone ²	PV Panel Visibility (DSM viewshed results)	
		Municipality	County			Visible (+)	Not Visible (-)
National Wildlife Refuges [16 U.S.C. 668dd]							
None identified							
Heritage Areas (formerly Urban Cultural Parks) [Parks, Recreation and Historic Preservation Law Section 35.15]							
Erie Canalway National Heritage Corridor	12	Towns of Fayette, Geneva, Junius, Phelps, Seneca Falls, Tyre, and Waterloo	Seneca, Ontario	7-26, 28-31, 34-39	Near-Foreground, Foreground, Middle ground		+
State Parks [Parks, Recreation and Historic Preservation Law Section 3.09]							
None identified							
State Nature and Historic Preserve Areas [Section 4 of Article XIV of the State Constitution]							
None identified							
State Forest Preserve [NYS Constitution Article XIV]							
None identified							
Other State Lands							
Junius Pond Unique Area	13	Towns of Junius and Waterloo	Seneca		Foreground, Middle ground		-
Wildlife Management Areas & Game Refuges							
None identified							
State Forests							
None identified							
State Fishing/Waterway Access Sites							
None identified							
Trails							
<i>State and Federal Trails³</i>							
None identified							
<i>Snowmobile/ATV Trails</i>							
None identified							
<i>Bike Trails/Routes</i>							
State Bike Route 14	14	Towns of Geneva and Phelps	Ontario		Middle ground		-
<i>Other Trails</i>							
Seneca-Cayuga Canal Trail	15	Towns of Fayette and Waterloo	Seneca		Middle ground		-
Palisades Park [Palisades Interstate Park Commission]							
Not Applicable							
Local Parks and Recreation Areas							
American Civil War Memorial	16	Town of Fayette	Seneca		Middle ground		-
Lafayette Park	17	Town of Waterloo	Seneca		Middle ground		-
Dak Island Park	18	Towns of Fayette and Waterloo	Seneca		Middle ground		-

North Seneca Solar Project

Towns of Junius and Waterloo, Seneca County, New York
Visual Outreach

Attachment C: Visually Sensitive Resource Table

Visually Sensitive Resource	Resource Number	Location		Representative Viewpoint Number(s) ¹	Distance Zone ²	PV Panel Visibility (DSM viewshed results)	
		Municipality	County			Visible (+)	Not Visible (-)
Seneca County Fairgrounds	19	Town of Waterloo	Seneca		Middle ground	-	
Waterloo Community Center	20	Town of Waterloo	Seneca		Middle ground	-	
Publicly Accessible Conservation Lands/Easements							
None Identified							
Rivers and Streams with Public Fishing Rights Easements							
None Identified							
Named Lakes, Ponds, and Reservoirs							
Bullhead Pond	21	Town of Waterloo	Seneca		Middle ground	-	
Burnett Pond	22	Town of Junius and Phelps	Seneca, Ontario		Middle ground	-	
Gem Lake	23	Town of Waterloo	Seneca		Middle ground	-	
Junius Ponds	24	Town of Junius	Seneca		Middle ground	-	
High-Use Public Areas							
State, US, and Interstate Highways							
Interstate 90	25	Towns of Junius, Phelps, and Tyre	Seneca, Ontario	2	Middle ground		+
NYS Route 14	26	Towns of Geneva and Phelps	Ontario		Middle ground	-	
NYS Route 318	27	Towns of Junius, Phelps, Seneca Falls, and Tyre	Seneca, Ontario	3-5	Middle ground		+
NYS Route 96	28	Towns of Fayette, Phelps, and Waterloo	Seneca, Ontario	11-19	Near-Foreground, Foreground, Middle ground		+
US Route 20	29	Towns of Geneva, Seneca Falls, Tyre, and Waterloo	Seneca, Ontario		Middle ground	-	
Schools							
Waterloo High School	30	Town of Waterloo	Seneca		Middle ground	-	
Cities, Villages, Hamlets							
Cities and Villages							
Village of Waterloo	31	Towns of Fayette, Seneca Falls, and Waterloo	Seneca		Middle ground	-	
Hamlets							
None Identified							
Native American Lands							
None Identified							
Resources Identified through Visual Outreach							
None identified at this time.							

North Seneca Solar Project

Towns of Junius and Waterloo, Seneca County, New York
Visual Outreach

Attachment C: Visually Sensitive Resource Table

Visually Sensitive Resource	Resource Number	Location		Representative Viewpoint Number(s) ¹	Distance Zone ²	PV Panel Visibility (DSM viewshed results)	
		Municipality	County			Visible (+)	Not Visible (-)

¹ Identified viewpoints are within 150 feet of the visually sensitive resource boundary. If no viewpoint number is indicated, no photos were obtained near this resource during fieldwork.

² For resources with potential PV panel visibility, the distance zone is based upon where PV panel visibility falls within the resource boundary.

³ State trails that occur within state lands are not identified individually, and are evaluated within the Visual Impact Assessment as part of the overall resource.

North Seneca Solar Project

Towns of Junius and Waterloo, Seneca County, New York
Visual Outreach

Attachment D: Viewpoint Photolog



Viewpoint 1 | Panorama
Panorama composition panning southeast to southwest



Viewpoint 1 | Single Frame

View looking south from Whiskey Hill Road in the Town of Junius, Seneca County, New York

Landscape Similarity Zone:
Agricultural/Rural Residential

Distance Zone:
Middle ground

Visually Sensitive Resource(s):
None Identified

Coordinates:
42.96506°N, 76.90433°W

Elevation:
512 ft.

North Seneca Solar Project

Towns of Junius and Waterloo, Seneca County, New York

Visual Outreach

EDR



Viewpoint 2 | Panorama
Panorama composition panning southeast to southwest



Viewpoint 2 | Single Frame

View looking south from Interstate 90 Eastbound in the Town of Junius, Seneca County, New York

Landscape Similarity Zone:
Transportation

Distance Zone:
Middle ground

Visually Sensitive Resource(s):
VSR ID # 25 - Interstate 90

Coordinates:
42.95993°N, 76.90100°W

Elevation:
496 ft.

North Seneca Solar Project

Towns of Junius and Waterloo, Seneca County, New York

Visual Outreach

EDR



Viewpoint 3 | Panorama
Panorama composition panning southeast to southwest



Viewpoint 3 | Single Frame

View looking south from State Route 318 in the Town of Junius, Seneca County, New York

Landscape Similarity Zone:
Agricultural/Rural Residential

Distance Zone:
Middle ground

Visually Sensitive Resource(s):
VSR ID # 27 - NYS Route 318

Coordinates:
42.95484°N, 76.90528°W

Elevation:
514 ft.

North Seneca Solar Project

Towns of Junius and Waterloo, Seneca County, New York

Visual Outreach

EDR



Viewpoint 4 | Panorama
Panorama composition panning southeast to west



Viewpoint 4 | Single Frame

View looking south from State Route 318 in the Town of Junius, Seneca County, New York

Landscape Similarity Zone: Agricultural/Rural Residential

Distance Zone: Middle ground

Visually Sensitive Resource(s): VSR ID # 27 - NYS Route 318

Coordinates: 42.95443°N, 76.89403°W

Elevation: 504 ft.

North Seneca Solar Project

Towns of Junius and Waterloo, Seneca County, New York

Visual Outreach

EDR _____



Viewpoint 5 | Panorama
Panorama composition panning southeast to southwest



Viewpoint 5 | Single Frame

View looking south from State Route 318 in the Town of Junius, Seneca County, New York

Landscape Similarity Zone: Agricultural/Rural Residential

Distance Zone: Middle ground

Visually Sensitive Resource(s): VSR ID # 27 - NYS Route 318

Coordinates: 42.95443°N, 76.89063°W

Elevation: 517 ft.

Viewpoint selected for simulation development

North Seneca Solar Project

Towns of Junius and Waterloo, Seneca County, New York

Visual Outreach

EDR _____



Viewpoint 6 | Panorama
Panorama composition panning south to north



Viewpoint 6 | Single Frame

View looking southwest from Mills Road in the Town of Junius, Seneca County, New York

Landscape Similarity Zone: Agricultural/Rural Residential

Distance Zone: Middle ground

Visually Sensitive Resource(s): None Identified

Coordinates: 42.94773°N, 76.88624°W

Elevation: 502 ft.

North Seneca Solar Project

Towns of Junius and Waterloo, Seneca County, New York

Visual Outreach

EDR _____



Viewpoint 7 | Panorama
Panorama composition panning south to west



Viewpoint 7 | Single Frame

View looking southwest from Mills Road in the Town of Junius, Seneca County, New York

Landscape Similarity Zone: Agricultural/Rural Residential

Distance Zone: Foreground

Visually Sensitive Resource(s): VSR ID # 12 - Erie Canalway National Heritage Corridor

Coordinates: 42.94473°N, 76.88693°W

Elevation: 501 ft.

Viewpoint selected for simulation development

North Seneca Solar Project

Towns of Junius and Waterloo, Seneca County, New York

Visual Outreach

EDR _____



Viewpoint 8 | Panorama
Panorama composition panning south to north



Viewpoint 8 | Single Frame

View looking southwest from Mills Road in the Town of Waterloo, Seneca County, New York

Landscape Similarity Zone: Agricultural/Rural Residential

Distance Zone: Foreground

Visually Sensitive Resource(s): VSR ID # 12 - Erie Canalway National Heritage Corridor

Coordinates: 42.94256°N, 76.88726°W

Elevation: 498 ft.

North Seneca Solar Project

Towns of Junius and Waterloo, Seneca County, New York

Visual Outreach

EDR _____



Viewpoint 9 | Panorama
Panorama composition panning south to west



Viewpoint 9 | Single Frame

View looking southwest from Mills Road in the Town of Waterloo, Seneca County, New York

Landscape Similarity Zone: Agricultural/Rural Residential

Distance Zone: Foreground

Visually Sensitive Resource(s): VSR ID # 12 - Erie Canalway National Heritage Corridor

Coordinates: 42.92996°N, 76.88588°W

Elevation: 496 ft.

North Seneca Solar Project

Towns of Junius and Waterloo, Seneca County, New York

Visual Outreach

EDR _____



Viewpoint 10 | Panorama
Panorama composition panning south to north



Viewpoint 10 | Single Frame

View looking west from Mills Road in the Town of Waterloo, Seneca County, New York

Landscape Similarity Zone: Agricultural/Rural Residential

Distance Zone: Foreground

Visually Sensitive Resource(s): VSR ID # 12 - Erie Canalway National Heritage Corridor

Coordinates: 42.92403°N, 76.88519°W

Elevation: 497 ft.

Viewpoint selected for simulation development

North Seneca Solar Project

Towns of Junius and Waterloo, Seneca County, New York

Visual Outreach

EDR _____



Viewpoint 11 | Panorama
Panorama composition panning southwest to north



Viewpoint 11 | Single Frame

View looking northwest from Mills Road in the Town of Waterloo, Seneca County, New York

Landscape Similarity Zone: Agricultural/Rural Residential

Distance Zone: Foreground

Visually Sensitive Resource(s): VSR ID # 12 - Erie Canalway National Heritage Corridor, VSR ID # 28 - NYS Route 96

Coordinates: 42.92126°N, 76.88503°W

Elevation: 488 ft.

North Seneca Solar Project

Towns of Junius and Waterloo, Seneca County, New York

Visual Outreach

EDR _____



Viewpoint 12 | Panorama
Panorama composition panning west to east



Viewpoint 12 | Single Frame

View looking northwest from State Route 96 in the Town of Waterloo, Seneca County, New York

Landscape Similarity Zone: Agricultural/Rural Residential

Distance Zone: Foreground

Visually Sensitive Resource(s): VSR ID # 12 - Erie Canalway National Heritage Corridor, VSR ID # 28 - NYS Route 96

Coordinates: 42.92294°N, 76.89386°W

Elevation: 492 ft.

North Seneca Solar Project

Towns of Junius and Waterloo, Seneca County, New York

Visual Outreach

EDR _____



Viewpoint 13 | Panorama
Panorama composition panning northwest to northeast



Viewpoint 13 | Single Frame

View looking north from State Route 96 in the Town of Waterloo, Seneca County, New York

Landscape Similarity Zone: Agricultural/Rural Residential

Distance Zone: Foreground

Visually Sensitive Resource(s): VSR ID # 12 - Erie Canalway National Heritage Corridor, VSR ID # 28 - NYS Route 96

Coordinates: 42.92335°N, 76.89658°W

Elevation: 504 ft.

Viewpoint selected for simulation development

North Seneca Solar Project

Towns of Junius and Waterloo, Seneca County, New York

Visual Outreach

EDR _____



Viewpoint 14 | Panorama
Panorama composition panning northwest to northeast



Viewpoint 14 | Single Frame

View looking northwest from State Route 96 in the Town of Waterloo, Seneca County, New York

Landscape Similarity Zone: Agricultural/Rural Residential

Distance Zone: Middle ground

Visually Sensitive Resource(s): VSR ID # 12 - Erie Canalway National Heritage Corridor, VSR ID # 28 - NYS Route 96

Coordinates: 42.92512°N, 76.90821°W

Elevation: 504 ft.

North Seneca Solar Project

Towns of Junius and Waterloo, Seneca County, New York

Visual Outreach

EDR _____



Viewpoint 15 | Panorama
Panorama composition panning west to east



Viewpoint 15 | Single Frame

View looking northwest from State Route 96 and Hidden Spring Lane in the Town of Waterloo, Seneca County, New York

Landscape Similarity Zone: Agricultural/Rural Residential

Distance Zone: Foreground

Visually Sensitive Resource(s): VSR ID # 12 - Erie Canalway National Heritage Corridor, VSR ID # 28 - NYS Route 96

Coordinates: 42.92874°N, 76.92889°W

Elevation: 529 ft.

Viewpoint selected for simulation development

North Seneca Solar Project

Towns of Junius and Waterloo, Seneca County, New York

Visual Outreach

EDR _____



Viewpoint 16A | Panorama
Panorama composition panning west to east



Viewpoint 16A | Single Frame

View looking northeast from State Route 96 in the Town of Waterloo, Seneca County, New York

Landscape Similarity Zone: Agricultural/Rural Residential

Distance Zone: Near-Foreground

Visually Sensitive Resource(s): VSR ID # 12 - Erie Canalway National Heritage Corridor, VSR ID # 28 - NYS Route 96

Coordinates: 42.92925°N, 76.93105°W

Elevation: 514 ft.

North Seneca Solar Project

Towns of Junius and Waterloo, Seneca County, New York

Visual Outreach

EDR _____



Viewpoint 16B | Panorama
Panorama composition panning east to west



Viewpoint 16B | Single Frame

View looking southwest from State Route 96 in the Town of Waterloo, Seneca County, New York

Landscape Similarity Zone: Agricultural/Rural Residential

Distance Zone: Near-Foreground

Visually Sensitive Resource(s): VSR ID # 12 - Erie Canalway National Heritage Corridor, VSR ID # 28 - NYS Route 96

Coordinates: 42.92925°N, 76.93105°W

Elevation: 514 ft.

North Seneca Solar Project

Towns of Junius and Waterloo, Seneca County, New York

Visual Outreach

EDR _____



Viewpoint 17A | Panorama
Panorama composition panning north to east



Viewpoint 17A | Single Frame

View looking northeast from State Route 96 in the Town of Waterloo, Seneca County, New York

Landscape Similarity Zone: Agricultural/Rural Residential

Distance Zone: Foreground

Visually Sensitive Resource(s): VSR ID # 12 - Erie Canalway National Heritage Corridor, VSR ID # 28 - NYS Route 96

Coordinates: 42.92988°N, 76.93383°W

Elevation: 510 ft.

North Seneca Solar Project

Towns of Junius and Waterloo, Seneca County, New York

Visual Outreach

EDR _____



Viewpoint 17B | Panorama
Panorama composition panning east to southeast



Viewpoint 17B | Single Frame

View looking south from State Route 96 in the Town of Waterloo, Seneca County, New York

Landscape Similarity Zone: Agricultural/Rural Residential

Distance Zone: Foreground

Visually Sensitive Resource(s): VSR ID # 12 - Erie Canalway National Heritage Corridor, VSR ID # 28 - NYS Route 96

Coordinates: 42.92988°N, 76.93383°W

Elevation: 510 ft.

North Seneca Solar Project

Towns of Junius and Waterloo, Seneca County, New York

Visual Outreach

EDR _____



Viewpoint 18 | Panorama
Panorama composition panning north to east



Viewpoint 18 | Single Frame

View looking northeast from State Route 96 in the Town of Waterloo, Seneca County, New York

Landscape Similarity Zone: Agricultural/Rural Residential

Distance Zone: Near-Foreground

Visually Sensitive Resource(s): VSR ID # 12 - Erie Canalway National Heritage Corridor, VSR ID # 28 - NYS Route 96

Coordinates: 42.93128°N, 76.93903°W

Elevation: 500 ft.

North Seneca Solar Project

Towns of Junius and Waterloo, Seneca County, New York

Visual Outreach



Viewpoint 19 | Panorama
Panorama composition panning northwest to southeast



Viewpoint 19 | Single Frame

View looking east from State Route 96 in the Town of Waterloo, Seneca County, New York

Landscape Similarity Zone: Agricultural/Rural Residential

Distance Zone: Foreground

Visually Sensitive Resource(s): VSR ID # 12 - Erie Canalway National Heritage Corridor, VSR ID # 28 - NYS Route 96

Coordinates: 42.93292°N, 76.9444°W

Elevation: 514 ft.

North Seneca Solar Project

Towns of Junius and Waterloo, Seneca County, New York

Visual Outreach



Viewpoint 20 | Panorama
Panorama composition panning north to southeast



Viewpoint 20 | Single Frame

View looking southeast from Bonnell Road in the Town of Waterloo, Seneca County, New York

Landscape Similarity Zone: Agricultural/Rural Residential

Distance Zone: Foreground

Visually Sensitive Resource(s): VSR ID # 12 - Erie Canalway National Heritage Corridor

Coordinates: 42.92933°N, 76.93654°W

Elevation: 512 ft.

North Seneca Solar Project

Towns of Junius and Waterloo, Seneca County, New York

Visual Outreach



Viewpoint 21 | Panorama
Panorama composition panning northeast to southeast



Viewpoint 21 | Single Frame

View looking east from Bonnell Road in the Town of Waterloo, Seneca County, New York

Landscape Similarity Zone: Agricultural/Rural Residential

Distance Zone: Foreground

Visually Sensitive Resource(s): VSR ID # 12 - Erie Canalway National Heritage Corridor

Coordinates: 42.92737°N, 76.93654°W

Elevation: 507 ft.

North Seneca Solar Project

Towns of Junius and Waterloo, Seneca County, New York

Visual Outreach





Viewpoint 22 | Panorama
Panorama composition panning northeast to southeast



Viewpoint 22 | Single Frame

View looking northeast from Bonnell Road in the Town of Waterloo, Seneca County, New York

Landscape Similarity Zone: Agricultural/Rural Residential

Distance Zone: Foreground

Visually Sensitive Resource(s): VSR ID # 12 - Erie Canalway National Heritage Corridor

Coordinates: 42.92505°N, 76.93633°W

Elevation: 491 ft.

North Seneca Solar Project

Towns of Junius and Waterloo, Seneca County, New York

Visual Outreach



Viewpoint 23 | Panorama
Panorama composition panning southwest to north



Viewpoint 23 | Single Frame

View looking north from Hidden Spring Lane in the Town of Waterloo, Seneca County, New York

Landscape Similarity Zone: Agricultural/Rural Residential

Distance Zone: Foreground

Visually Sensitive Resource(s): VSR ID # 12 - Erie Canalway National Heritage Corridor

Coordinates: 42.92823°N, 76.92889°W

Elevation: 526 ft.

North Seneca Solar Project

Towns of Junius and Waterloo, Seneca County, New York

Visual Outreach



Viewpoint 24 | Panorama
Panorama composition panning southwest to northwest



Viewpoint 24 | Single Frame

View looking west from Ninefoot Road in the Town of Waterloo, Seneca County, New York

Landscape Similarity Zone: Agricultural/Rural Residential

Distance Zone: Near-Foreground

Visually Sensitive Resource(s): VSR ID # 12 - Erie Canalway National Heritage Corridor

Coordinates: 42.93168°N, 76.92324°W

Elevation: 516 ft.

North Seneca Solar Project

Towns of Junius and Waterloo, Seneca County, New York

Visual Outreach



Viewpoint 25 | Panorama
Panorama composition panning south to north



Viewpoint 25 | Single Frame

View looking west from Ninefoot Road in the Town of Waterloo, Seneca County, New York

Landscape Similarity Zone: Agricultural/Rural Residential

Distance Zone: Foreground

Visually Sensitive Resource(s): VSR ID # 12 - Erie Canalway National Heritage Corridor

Coordinates: 42.94215°N, 76.92339°W

Elevation: 502 ft.

Viewpoint selected for simulation development

North Seneca Solar Project

Towns of Junius and Waterloo, Seneca County, New York

Visual Outreach





Viewpoint 26 | Panorama
Panorama composition panning south to northwest



Viewpoint 26 | Single Frame

View looking west from Ninefoot Road in the Town of Junius, Seneca County, New York

Landscape Similarity Zone: Agricultural/Rural Residential

Distance Zone: Foreground

Visually Sensitive Resource(s): VSR ID # 12 - Erie Canalway National Heritage Corridor

Coordinates: 42.94606°N, 76.92375°W

Elevation: 538 ft.

Viewpoint selected for simulation development

North Seneca Solar Project

Towns of Junius and Waterloo, Seneca County, New York

Visual Outreach

EDR _____



Viewpoint 27 | Panorama
Panorama composition panning south to north



Viewpoint 27 | Single Frame

View looking west from Ninefoot Road in the Town of Junius, Seneca County, New York

Landscape Similarity Zone: Agricultural/Rural Residential

Distance Zone: Foreground

Visually Sensitive Resource(s): None Identified

Coordinates: 42.94768°N, 76.92409°W

Elevation: 508 ft.

North Seneca Solar Project

Towns of Junius and Waterloo, Seneca County, New York

Visual Outreach

EDR _____



Viewpoint 28 | Panorama
Panorama composition panning southwest to northwest



Viewpoint 28 | Single Frame

View looking northwest from Dunham Road in the Town of Waterloo, Seneca County, New York

Landscape Similarity Zone: Agricultural/Rural Residential

Distance Zone: Foreground

Visually Sensitive Resource(s): VSR ID # 12 - Erie Canalway National Heritage Corridor

Coordinates: 42.93905°N, 76.92100°W

Elevation: 498 ft.

North Seneca Solar Project

Towns of Junius and Waterloo, Seneca County, New York

Visual Outreach

EDR _____



Viewpoint 29 | Panorama
Panorama composition panning east to southwest



Viewpoint 29 | Single Frame

View looking south from Dunham Road in the Town of Waterloo, Seneca County, New York

Landscape Similarity Zone: Agricultural/Rural Residential

Distance Zone: Foreground

Visually Sensitive Resource(s): VSR ID # 12 - Erie Canalway National Heritage Corridor

Coordinates: 42.93945°N, 76.90651°W

Elevation: 505 ft.

North Seneca Solar Project

Towns of Junius and Waterloo, Seneca County, New York

Visual Outreach

EDR _____



Viewpoint 30 | Panorama
Panorama composition panning east to west



Viewpoint 30 | Single Frame

View looking south from Dunham Road in the Town of Waterloo, Seneca County, New York

Landscape Similarity Zone: Agricultural/Rural Residential

Distance Zone: Foreground

Visually Sensitive Resource(s): VSR ID # 12 - Erie Canalway National Heritage Corridor

Coordinates: 42.93951°N, 76.90434°W

Elevation: 517 ft.

North Seneca Solar Project

Towns of Junius and Waterloo, Seneca County, New York

Visual Outreach

EDR _____



Viewpoint 31 | Panorama
Panorama composition panning east to west



Viewpoint 31 | Single Frame

View looking east from Dunham Road in the Town of Waterloo, Seneca County, New York

Landscape Similarity Zone: Agricultural/Rural Residential

Distance Zone: Foreground

Visually Sensitive Resource(s): VSR ID # 12 - Erie Canalway National Heritage Corridor

Coordinates: 42.93955°N, 76.90345°W

Elevation: 519 ft.

North Seneca Solar Project

Towns of Junius and Waterloo, Seneca County, New York

Visual Outreach

EDR _____



Viewpoint 32 | Panorama
Panorama composition panning southeast to southwest



Viewpoint 32 | Single Frame

View looking south from Whiskey Hill Road in the Town of Junius, Seneca County, New York

Landscape Similarity Zone: Agricultural/Rural Residential

Distance Zone: Middle Ground

Visually Sensitive Resource(s): None Identified

Coordinates: 42.95094°N, 76.90256°W

Elevation: 559 ft.

North Seneca Solar Project

Towns of Junius and Waterloo, Seneca County, New York

Visual Outreach

EDR _____



Viewpoint 33 | Panorama
Panorama composition panning southeast to southwest



Viewpoint 33 | Single Frame

View looking south from Whiskey Hill Road in the Town of Junius, Seneca County, New York

Landscape Similarity Zone: Agricultural/Rural Residential

Distance Zone: Middle ground

Visually Sensitive Resource(s): None Identified

Coordinates: 42.94798°N, 76.90168°W

Elevation: 553 ft.

North Seneca Solar Project

Towns of Junius and Waterloo, Seneca County, New York

Visual Outreach

EDR _____



Viewpoint 34 | Panorama
Panorama composition panning southeast to southwest



Viewpoint 34 | Single Frame

View looking southeast from Whiskey Hill Road in the Town of Waterloo, Seneca County, New York

Landscape Similarity Zone: Agricultural/Rural Residential

Distance Zone: Foreground

Visually Sensitive Resource(s): VSR ID # 12 - Erie Canalway National Heritage Corridor

Coordinates: 42.94281°N, 76.90157°W

Elevation: 501 ft.

North Seneca Solar Project

Towns of Junius and Waterloo, Seneca County, New York

Visual Outreach

EDR _____



Viewpoint 35 | Panorama
Panorama composition panning north to south



Viewpoint 35 | Single Frame

View looking east from Whiskey Hill Road and Durham Road in the Town of Waterloo, Seneca County, New York

Landscape Similarity Zone: Agricultural/Rural Residential

Distance Zone: Foreground

Visually Sensitive Resource(s): VSR ID # 12 - Erie Canalway National Heritage Corridor

Coordinates: 42.93956°N, 76.90174°W

Elevation: 509 ft.

Viewpoint selected for simulation development

North Seneca Solar Project

Towns of Junius and Waterloo, Seneca County, New York

Visual Outreach

EDR _____



Viewpoint 36A | Panorama
Panorama composition panning east to southwest



Viewpoint 36A | Single Frame

View looking east from Whiskey Hill Road in the Town of Waterloo, Seneca County, New York

Landscape Similarity Zone: Agricultural/Rural Residential

Distance Zone: Near-Foreground

Visually Sensitive Resource(s): VSR ID # 12 - Erie Canalway National Heritage Corridor

Coordinates: 42.93776°N, 76.90161°W

Elevation: 513 ft.

North Seneca Solar Project

Towns of Junius and Waterloo, Seneca County, New York

Visual Outreach

EDR _____



Viewpoint 36B | Panorama
Panorama composition panning east to southwest



Viewpoint 36B | Single Frame

View looking southwest from Whiskey Hill Road in the Town of Waterloo, Seneca County, New York

Landscape Similarity Zone: Agricultural/Rural Residential

Distance Zone: Near-Foreground

Visually Sensitive Resource(s): VSR ID # 12 - Erie Canalway National Heritage Corridor

Coordinates: 42.93776°N, 76.90161°W

Elevation: 513 ft.

Viewpoint selected for simulation development

North Seneca Solar Project

Towns of Junius and Waterloo, Seneca County, New York

Visual Outreach

EDR _____

**Response from Representative of the Seneca-Iroquois National
Museum Onõhsagwë: De' Cultural Center**

From: [Joe Stahlman](#)
To: [Jessey Horvat](#)
Subject: RE: North Seneca Solar Project Visual Outreach
Date: Wednesday, October 25, 2023 8:24:16 AM

[EXTERNAL SENDER]

Hi Jessey,
I've gone through our records. I'm not coming up with anything in the areas proposed. I would reach out to the Cayuga. Please stay in touch as the project proceeds.

Be well,

Joe

From: Jessey Horvat <jhorvat@edrdpc.com>
Sent: Thursday, October 12, 2023 1:25 PM
Subject: North Seneca Solar Project Visual Outreach

Dear Project Stakeholder,

This email is in regard to the North Seneca Solar Project (Facility) which is proposed in Towns of Waterloo and Junius, Seneca County, New York, that will be reviewed under Section 94-c of the New York State Executive Law. On behalf of the Applicant (North Seneca Solar Project, LLC), I am reaching out to you to request your input on the identification of visually sensitive resources, existing and proposed sensitive land uses, and potential photosimulation locations within the 2-mile visual study area.

A letter and attachments with additional instructions and information on the Facility location, currently identified visually sensitive resources, and the locations that we have selected for the development of photosimulations are attached to this email. Your contributions should include publicly accessible locations that may be sensitive to visual change and are important to you and the local community.

We ask that your responses be provided by **November 10, 2023**, so that we can ensure your input is included in the analysis. If required, paper copies of this information can be provided upon request (reply to this email).

Thank you in advance for your participation in this important outreach process and we look forward to receiving your input,

Jessey Horvat

EDR Project Manager, Visualization Services
217 Montgomery Street, Suite 1100, Syracuse, New York 13202
E: jhorvat@edrdpc.com
www.edrdpc.com
EDR a **better** environment

Response from Office of Renewable Energy Siting and Correspondence

From: [Kolankowski, Thaddeus \(ORES\)](#)
To: [Jessey Horvat](#)
Subject: RE: North Seneca Solar Project Visual Outreach
Date: Monday, November 20, 2023 1:45:33 PM

[EXTERNAL SENDER]

Jessey,

We will try to get answers to the outstanding questions in the next couple of week.
Have a great thanksgiving.

Ted

From: Jessey Horvat <jhorvat@edrdpc.com>
Sent: Monday, November 20, 2023 11:29 AM
To: Kolankowski, Thaddeus (ORES) <Thaddeus.Kolankowski@ores.ny.gov>
Cc: Primeau, Kristy (ORES) <Kristy.Primeau@ores.ny.gov>; Betsworth, Jennifer (ORES) <Jennifer.Betsworth@ores.ny.gov>
Subject: RE: North Seneca Solar Project Visual Outreach

ATTENTION: This email came from an external source. Do not open attachments or click on links from unknown senders or unexpected emails.

Good Morning Ted,

Thank you for your response. Most of these items can be addressed without further discussion. However, a few questions came up after reviewing your requests – see in-line red text in your email, below.

Can you please provide clarification on these items so we can provide you with the requested materials/incorporate your recommendations into the VIA?

Thank you,

Jessey Horvat

EDR Project Manager, Visualization Services
217 Montgomery Street, Suite 1100, Syracuse, New York 13202
E: jhorvat@edrdpc.com C: 860.420.8592 www.edrdpc.com
EDR a **better** environment

From: Kolankowski, Thaddeus (ORES) <Thaddeus.Kolankowski@ores.ny.gov>
Sent: Monday, November 13, 2023 3:31 PM
To: Jessey Horvat <jhorvat@edrdpc.com>
Cc: Primeau, Kristy (ORES) <Kristy.Primeau@ores.ny.gov>; Betsworth, Jennifer (ORES) <Jennifer.Betsworth@ores.ny.gov>
Subject: RE: North Seneca Solar Project Visual Outreach

[EXTERNAL SENDER]

Dear Jessey,

Thank you for sending ORES the VIA Information Request for the North Seneca Solar project. Based on our review of the material dated 10/12/2023, we offer the following comments and/or requests for the Application submission.

To help the Office assess a selection of important or representative viewpoints, please provide GIS shapefiles and a KMZ google earth file to correspond with Figure 2 Visually Sensitive Resources and Viewshed Results. Please include the proposed array locations, proposed fence line, panel visibility, 2 mile study area boundary, viewpoint (VP) locations, and label all visual resources as identified on Attachment C: Visually Sensitive Resource Table. **Noted, requested materials will be provided in a supplemental outreach submission following clarifications on visually sensitive resources requests.**

Please update the Attachments with the following information:

General

1. Please confirm that these documents do not need to be redacted prior to being made "live" on the portal; **Can you please confirm which documents will be posted to the portal? Will the shapefiles and KMZs also be made live?**
2. Fence lines should be show on 1:24000 scale maps; **Noted, the fenceline will be included in mapping documents and figures in the application submission.**
3. Photo-simulations should include leaf-on photos are required where existing vegetation is relied on for screening and should illustrate a 2 year growth simulation at a minimum; **Noted, will be considered for the photosimulations that will be included in the application submission.**
4. There is a typo on Attachment B, Sheet 3 which should read as follows: "Seneca Nation of Indians" **Noted, will be updated in the application submission.**

Attachment A: Figure 2: Visual Sensitive Resources and Viewshed, please include: **As described in the letter, the visually sensitive resources identified for this study will be based upon the "designated scenic resources, areas or features" categories identified in subsection 900-2.9(b)(4)(ii) of the 94-c regulations. In addition, we also included a few other categories of aesthetic resources identified in DEC visual policy (DEP-00-02 Assessing and Mitigating Visual and Aesthetic Impacts).**

- Seneca River - Seneca River/Cayuga Seneca Canal; **In order to evaluate potential visual effects for this feature in the VIA, can you please identify the appropriate designation/significance category? It should be noted that the canal falls within the boundaries of another resource, the Enlarged Erie Barge Canal (VSR ID # 1), which is a national historic landmark.**
- Quaker Cemetery and any other Cemeteries in the Study Area; **Can you please identify the appropriate designation/significant category for cemeteries?**
- Junius Ponds Cabins & Campgrounds; **Noted, will be included in the supplemental outreach submission.**
- North Seneca Sportsmen's Club; **Noted, will be included in the supplemental outreach**

submission.

- Residence on Rte 318 700' East of Grange Hall Road. Can you please identify the appropriate designation/significance category for this particular residence?

Attachment C: Visually Sensitive Resources Table

- There are several waterway access sites along the Cayuga Seneca Canal that should be included. Through an internet/parcel database search, one additional public waterway access site was identified near the intersection of West Water Street and Locust Street in Waterloo and will be included in the supplemental outreach submission. Other publicly accessible waterway access sites were identified in Oak Island Park (VSR ID # 18). However, because these sites fall within the park boundary they were not delineated as separate resources. Can you please provide additional location information on any other publicly accessible waterway access sites so they can be added to the inventory?
- Consider editing the VSR Table and map to state "National Historic Landmarks." There is no State Historic Landmark program in New York. Noted, will be updated in the application submission.

Attachment D: Viewpoint Photolog

- Add a viewpoint from [Quaker Cemetery](#). It appears likely to have direct visibility, is associated with an early, prominent Quaker community, and includes burials of at least three Declaration of Sentiments signers; Noted, we will document visibility from this location in field review and consider it for photosimulation development.
- Add a viewpoint for the Residence on NYS Route 318, 700' East of Grange Hall Road facing south; Noted, we will document visibility from this location during field review and consider it for photosimulation development.
- Note that it may be appropriate to include viewpoints from National Register eligible resources identified as a result of the ongoing survey. Noted, once State/National Register eligible resources are identified we will consider them for photosimulation development.

Please share any available Visual Impact Consultation feedback provided by OPRHP/SHPO, DEC, Seneca County, towns, villages, community members, etc. We received one response from a representative of the Seneca Nation of Indians (see attached). However, this response did not identify any visually sensitive resource or photosimulation location recommendations.

Thank you,

Ted

From: Jessey Horvat <jhorvat@edrdpc.com>

Sent: Thursday, October 12, 2023 1:25 PM

Subject: North Seneca Solar Project Visual Outreach

ATTENTION: This email came from an external source. Do not open attachments or click on links from unknown senders or unexpected emails.

Dear Project Stakeholder,

This email is in regard to the North Seneca Solar Project (Facility) which is proposed in Towns of Waterloo and Junius, Seneca County, New York, that will be reviewed under Section 94-c of the New York State Executive Law. On behalf of the Applicant (North Seneca Solar Project, LLC), I am reaching out to you to request your input on the identification of visually sensitive resources, existing and proposed sensitive land uses, and potential photosimulation locations within the 2-mile visual study area.

A letter and attachments with additional instructions and information on the Facility location, currently identified visually sensitive resources, and the locations that we have selected for the development of photosimulations are attached to this email. Your contributions should include publicly accessible locations that may be sensitive to visual change and are important to you and the local community.

We ask that your responses be provided by **November 10, 2023**, so that we can ensure your input is included in the analysis. If required, paper copies of this information can be provided upon request (reply to this email).

Thank you in advance for your participation in this important outreach process and we look forward to receiving your input,

Jessey Horvat

EDR Project Manager, Visualization Services
217 Montgomery Street, Suite 1100, Syracuse, New York 13202

E: jhorvat@edrdpc.com

www.edrdpc.com

EDR a **better** environment