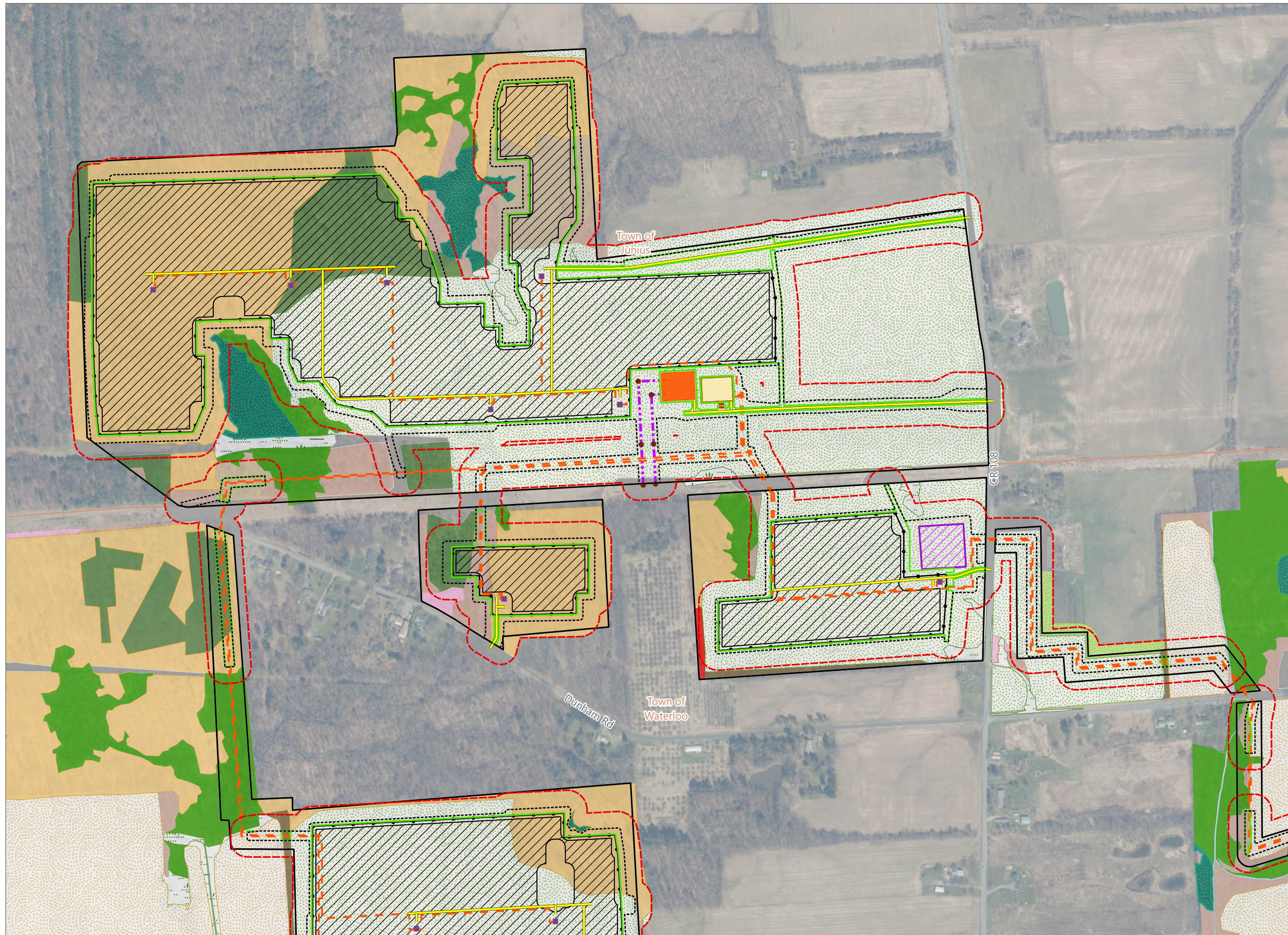


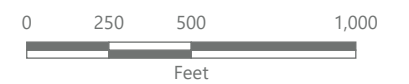
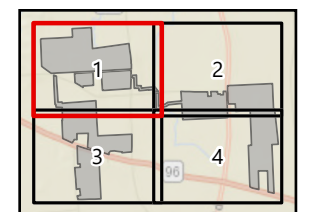
North Seneca Solar Project

Towns of Waterloo and Junius
Seneca County, New York

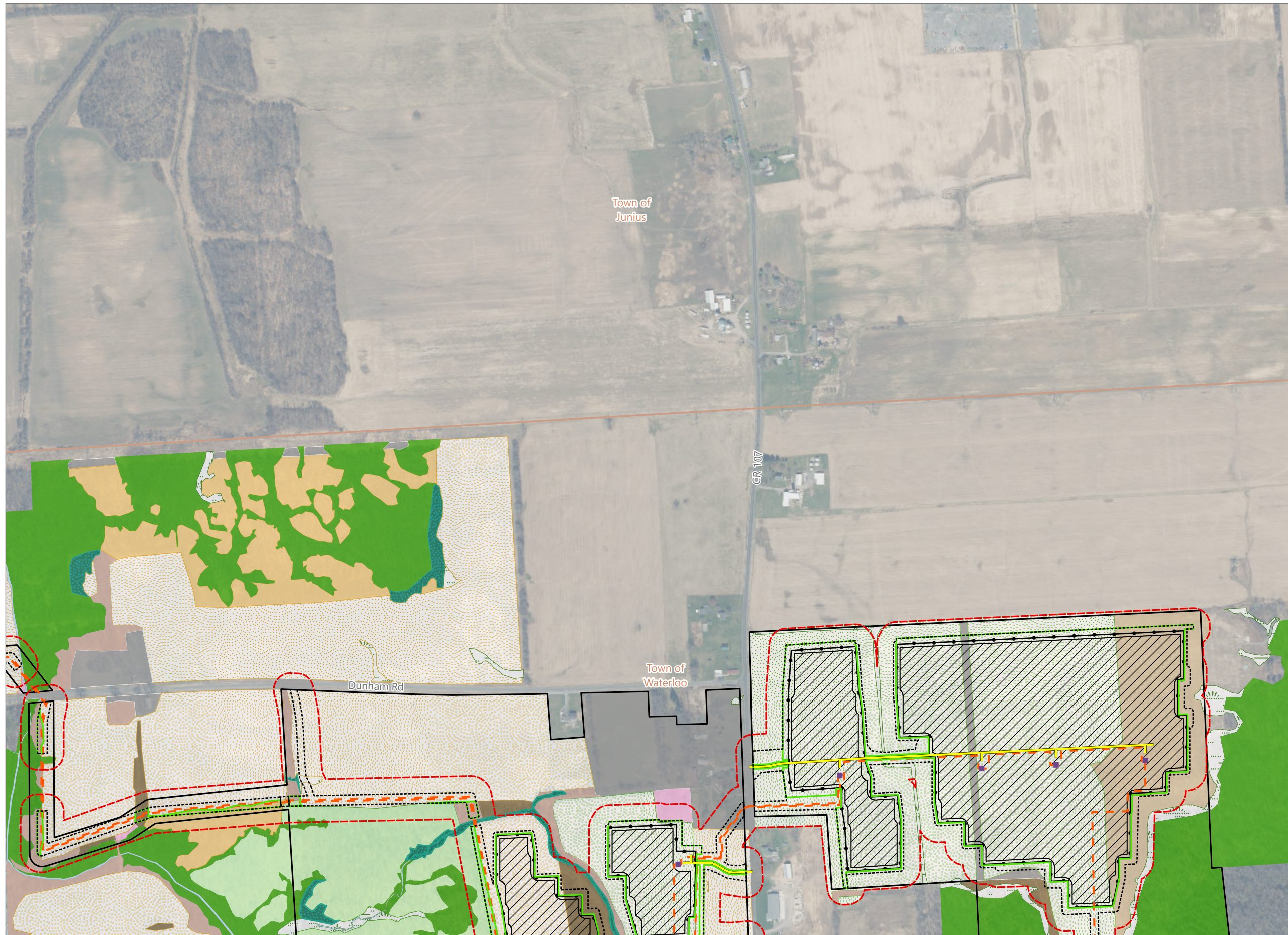
Article VIII
Application Supplement
Matter No. 23-00036



- Ecological Cover Type**
- Apple Orchard
 - Cropland/Field Crops
 - Cropland/Row Crops
 - Brushy Cleared Land
 - Conifer Plantation
 - Developed/Disturbed
 - Emergent Wetland
 - Open Water
 - Pastureland
 - Rich Mesophytic Forest
 - Scrub Shrub Wetland
 - Silver Maple-Ash Swamp
 - Successional Northern Hardwoods
 - Successional Old Field
 - Successional Shrubland
- Facility Components**
- Utility Pole
 - Storage Trailer
 - Access Road
 - Collection Line
 - Transmission Tap Line
 - PV Array Area
 - Inverter
 - Collection Substation
 - POI Substation
 - Fence Line
 - Laydown Area
 - Limit of Vegetation Management
 - Limit of Construction Activity
 - Plant Community Study Area
 - Facility Site



Prepared October 17, 2024
Basemap: USDA NAIP "2022 New York 60cm"
orthoimagery map service

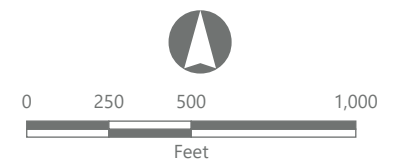
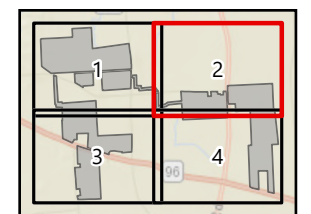


North Seneca Solar Project

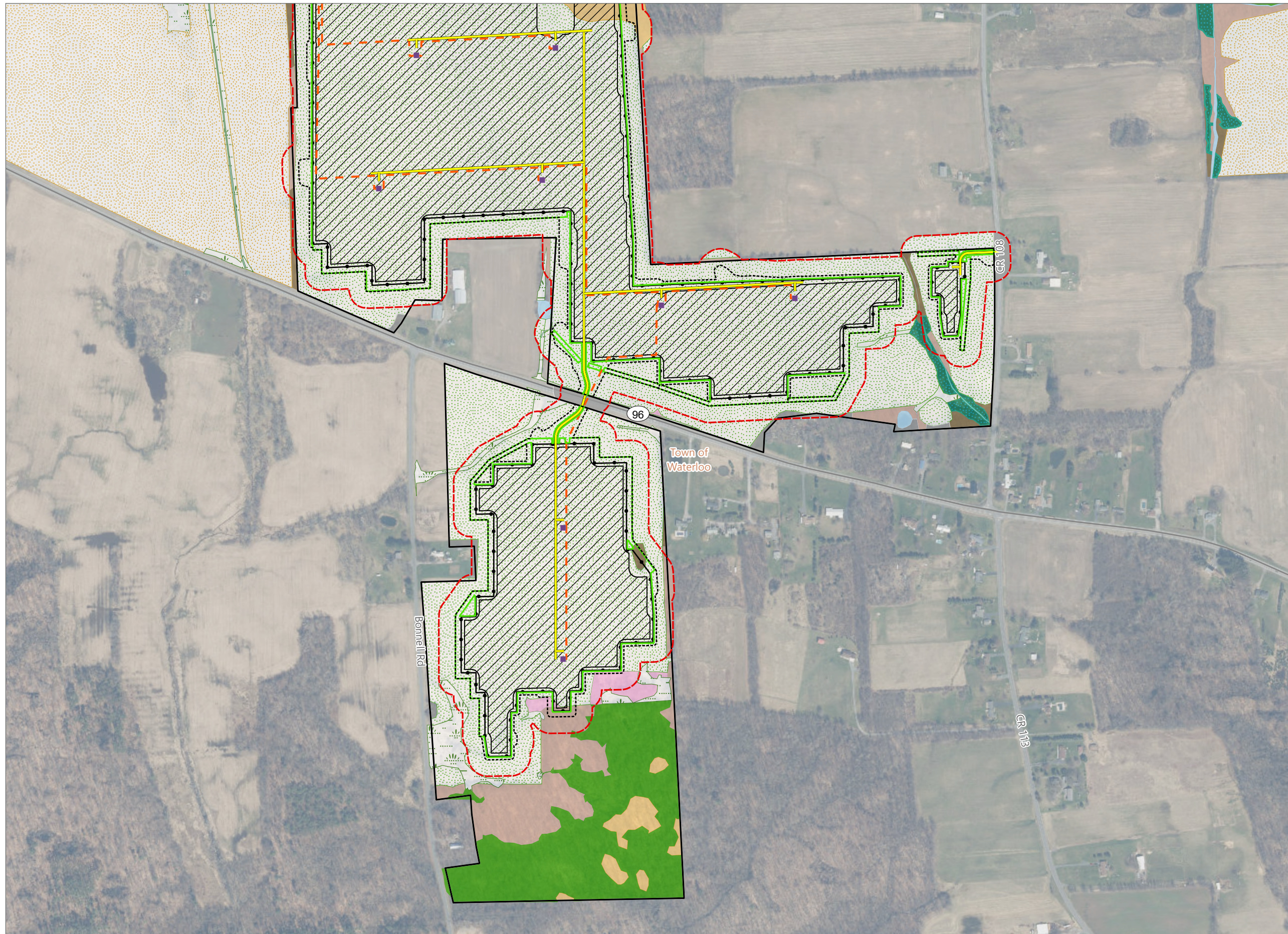
Towns of Waterloo and Junius
Seneca County, New York

Article VIII
Application Supplement
Matter No. 23-00036

- Ecological Cover Type**
- Cropland/Field Crops
 - Cropland/Row Crops
 - Brushy Cleared Land
 - Developed/Disturbed
 - Emergent Wetland
 - Hemlock Northern Hardwoods
 - Open Water
 - Rich Mesophytic Forest
 - Scrub Shrub Wetland
 - Silver Maple-Ash Swamp
 - Successional Northern Hardwoods
 - Successional Old Field
 - Successional Shrubland
- Facility Components**
- Access Road
 - Collection Line
 - Transmission Tap Line
 - PV Array Area
 - Inverter
 - Fence Line
 - Limit of Vegetation Management
 - Limit of Construction Activity
 - Plant Community Study Area
 - Facility Site



Prepared October 17, 2024
Basemap: USDA NAIP "2022 New York 60cm"
orthoimagery map service

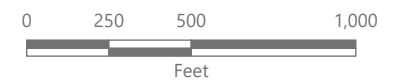
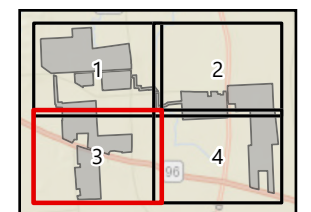


North Seneca Solar Project

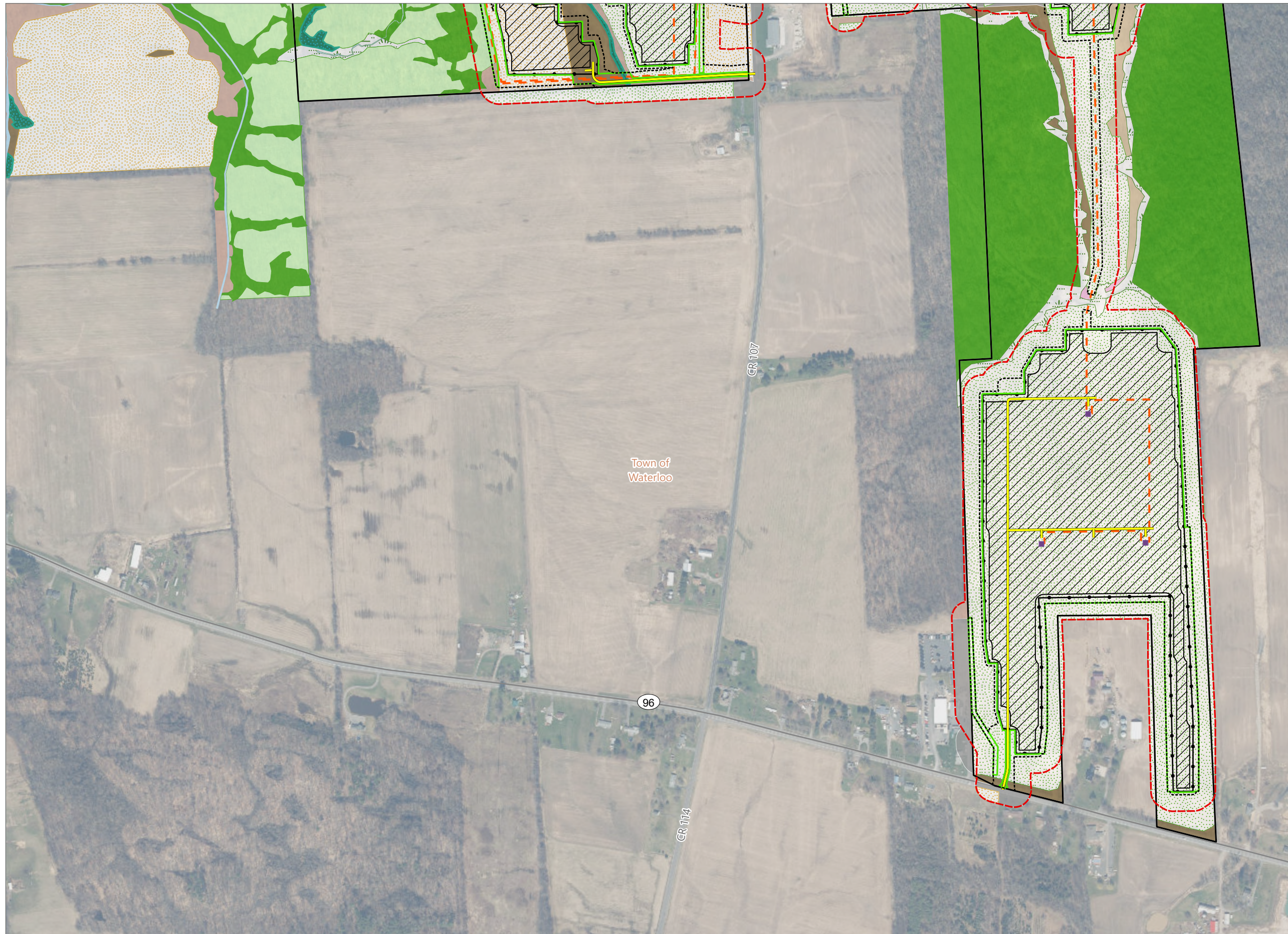
Towns of Waterloo and Junius
Seneca County, New York

Article VIII
Application Supplement
Matter No. 23-00036

- Ecological Cover Type**
- Cropland/Field Crops
 - Cropland/Row Crops
 - Developed/Disturbed
 - Emergent Wetland
 - Open Water
 - Rich Mesophytic Forest
 - Scrub Shrub Wetland
 - Silver Maple-Ash Swamp
 - Successional Northern Hardwoods
 - Successional Old Field
 - Successional Shrubland
- Facility Components**
- Access Road
 - Collection Line
 - Transmission Tap Line
 - PV Array Area
 - Inverter
 - Fence Line
 - Limit of Vegetation Management
 - Limit of Construction Activity
 - Plant Community Study Area
 - Facility Site



Prepared October 17, 2024
Basemap: USDA NAIP "2022 New York 60cm"
orthoimagery map service

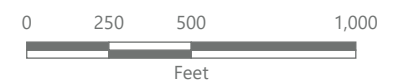
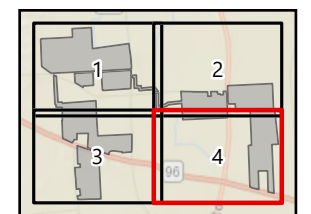


North Seneca Solar Project

Towns of Waterloo and Junius
Seneca County, New York

Article VIII
Application Supplement
Matter No. 23-00036

- Ecological Cover Type**
- Cropland/Field Crops
 - Cropland/Row Crops
 - Brushy Cleared Land
 - Developed/Disturbed
 - Emergent Wetland
 - Hemlock Northern Hardwoods
 - Open Water
 - Scrub Shrub Wetland
 - Silver Maple-Ash Swamp
 - Successional Northern Hardwoods
 - Successional Old Field
 - Successional Shrubland
- Facility Components**
- Access Road
 - Collection Line
 - Transmission Tap Line
 - PV Array Area
 - Inverter
 - Fence Line
 - Limit of Vegetation Management
 - Limit of Construction Activity
 - Plant Community Study Area
 - Facility Site



Prepared October 17, 2024
Basemap: USDA NAIP "2022 New York 60cm" orthoimagery map service