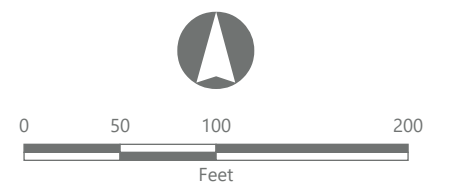
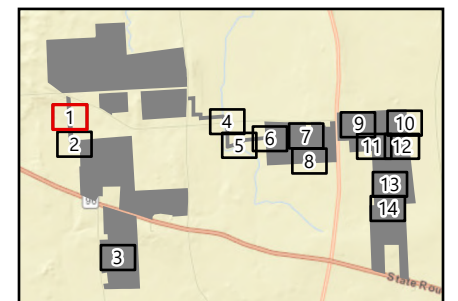


North Seneca Solar Project

Towns of Waterloo and Junius
Seneca County, New York

Article VIII
Application Supplement
Matter No. 23-00036

- Facility Components
- Collection Line
 - Limit of Construction Activity
 - Limit of Clearing
 - Facility Site
 - Wetland Study Area
- Wetlands and Streams
- Wetland Continues
 - Approximate Wetland
 - Delineated Wetland w/ Potential Federal Jurisdiction
 - State Regulated Delineated Wetland per Jurisdictional Determination Letter
 - State-Regulated Adjacent Area (RAA)
- State RAA Impact
- Major



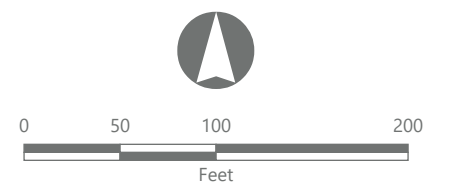
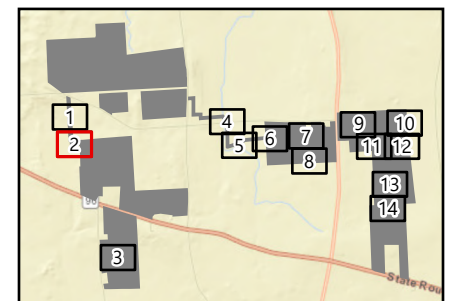
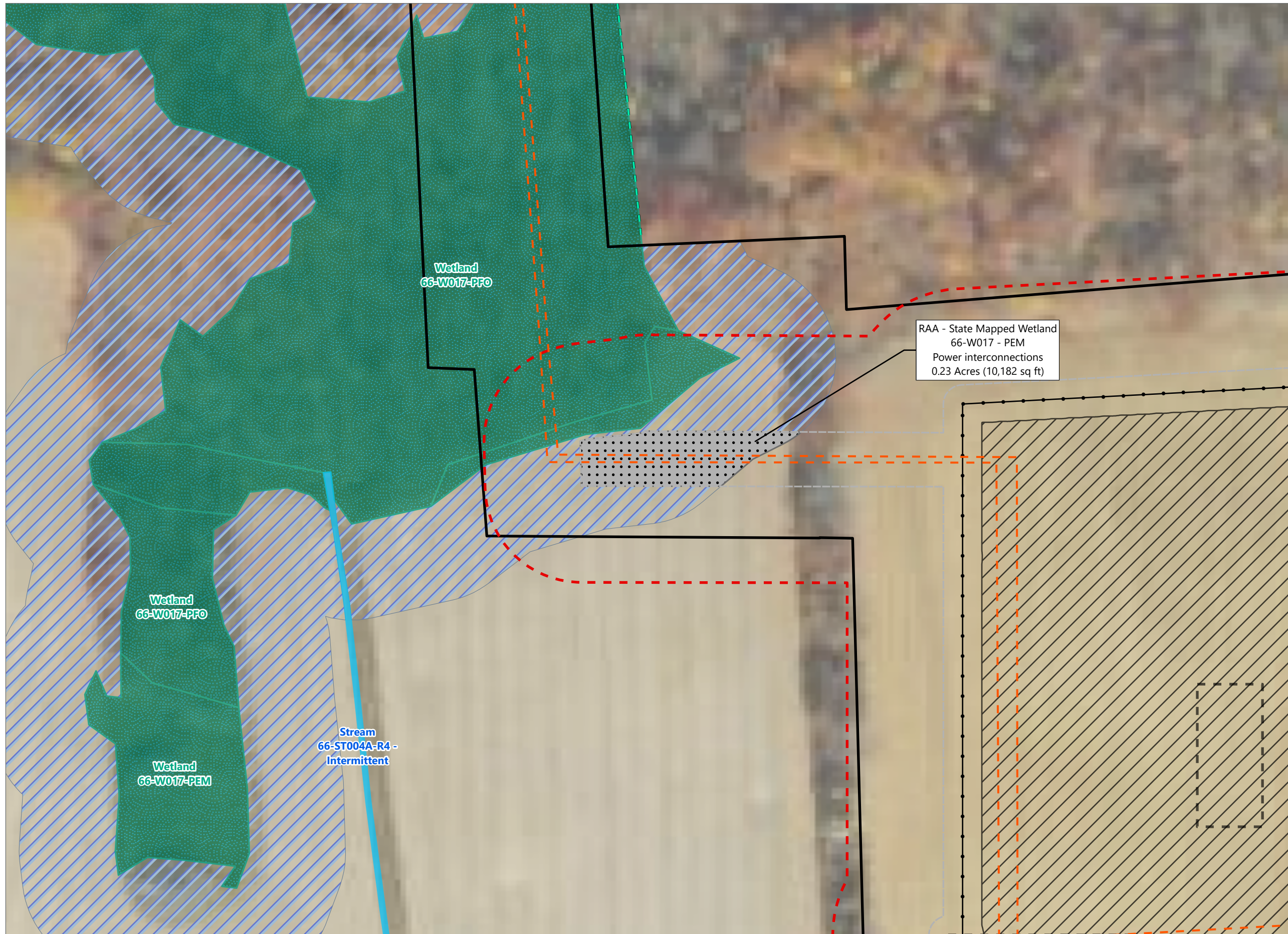
Prepared October 17, 2024
Basemap: USDA NAIP "2022 New York 60cm" orthoimagery map service

North Seneca Solar Project

Towns of Waterloo and Junius
Seneca County, New York

Article VIII
Application Supplement
Matter No. 23-00036

- Facility Components**
- Collection Line
 - PV Array Area
 - Fence Line
 - Limit of Grading
 - Limit of Construction Activity
 - Facility Site
 - Wetland Study Area
- Wetlands and Streams**
- Wetland Continues
 - Delineated Stream w/ Potential Federal Jurisdiction
 - State Regulated Delineated Wetland per Jurisdictional Determination Letter
 - State-Regulated Adjacent Area (RAA)
- State RAA Impact**
- Major

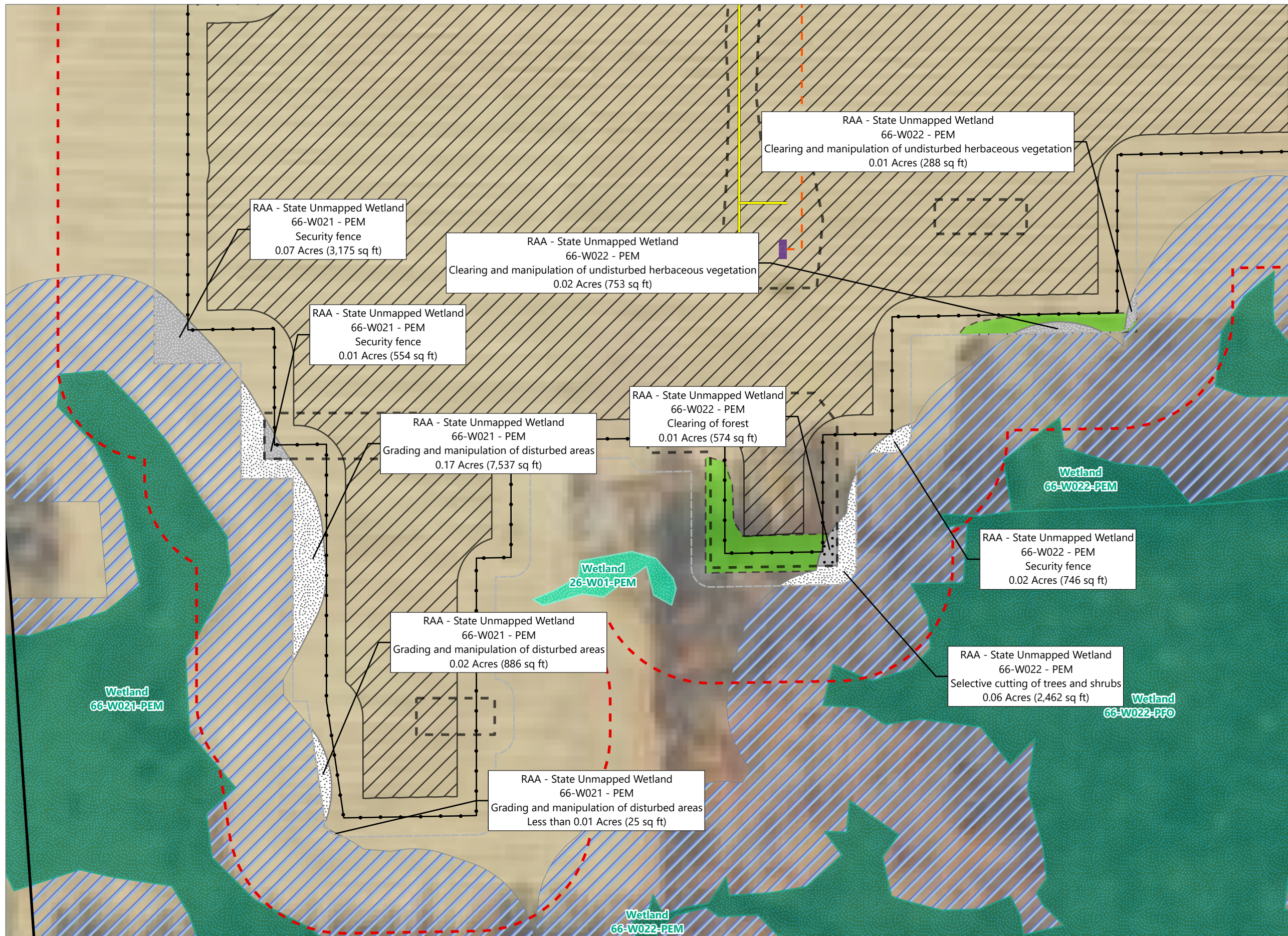


Prepared October 17, 2024
Basemap: USDA NAIP "2022 New York 60cm" orthoimagery map service

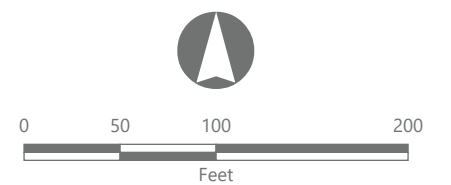
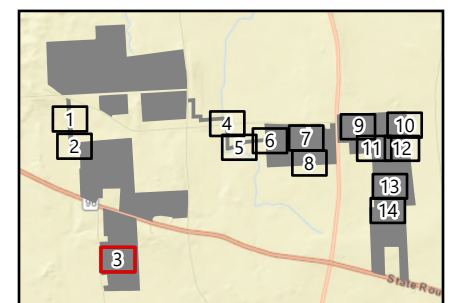
North Seneca Solar Project

Towns of Waterloo and Junius
Seneca County, New York

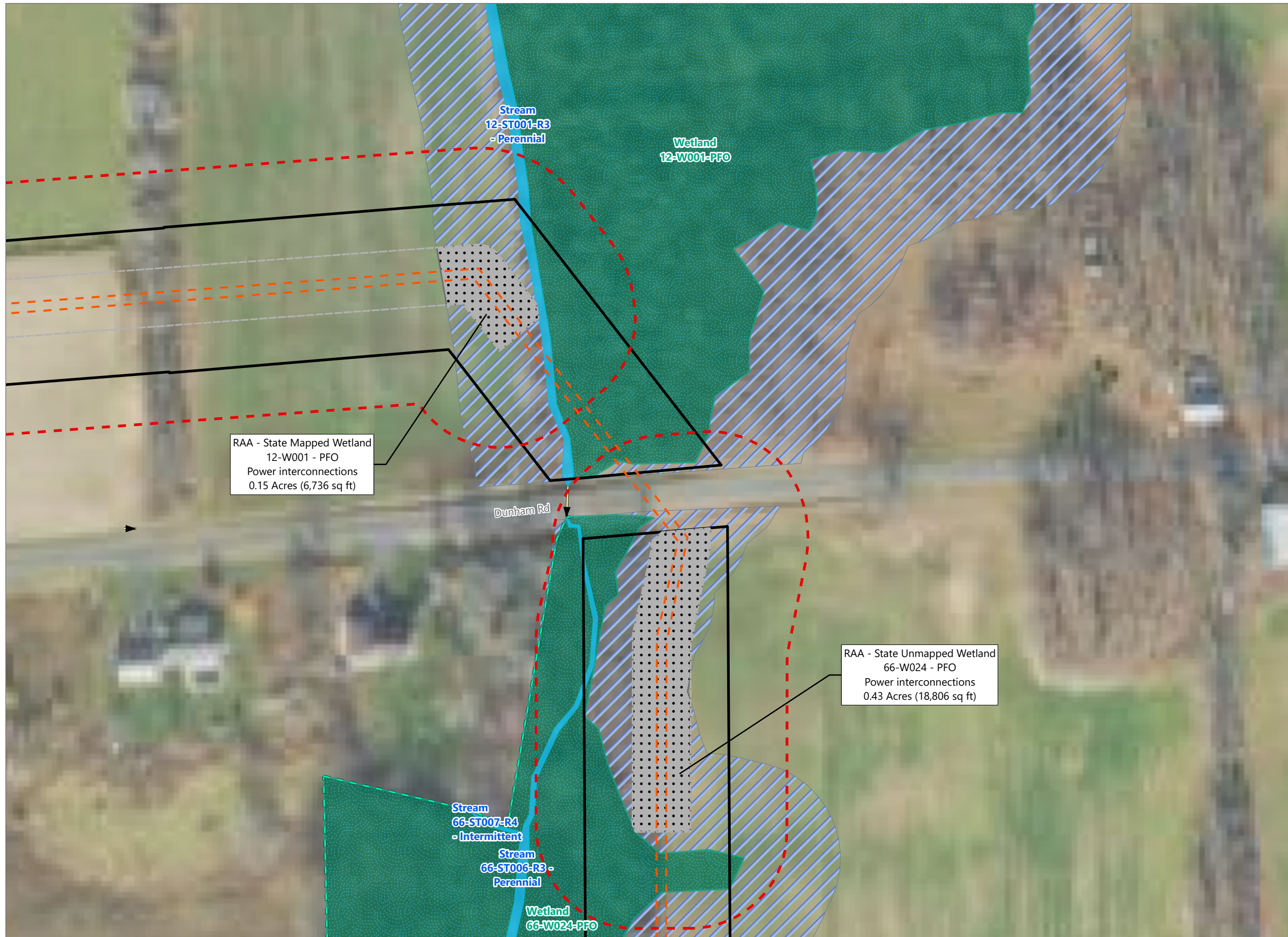
Article VIII
Application Supplement
Matter No. 23-00036



- Facility Components**
- Access Road
 - Collection Line
 - PV Array Area
 - Inverter
 - Fence Line
 - Limit of Grading
 - Limit of Construction Activity
 - Limit of Clearing
 - Facility Site
 - Wetland Study Area
- Wetlands and Streams**
- Delineated Wetland w/ Potential Federal Jurisdiction
 - State Regulated Delineated Wetland per Jurisdictional Determination Letter
 - State-Regulated Adjacent Area (RAA)
- State RAA Impact**
- Major
 - Intermediate
 - Minor



Prepared October 17, 2024
Basemap: USDA NAIP "2022 New York 60cm" orthoimagery map service

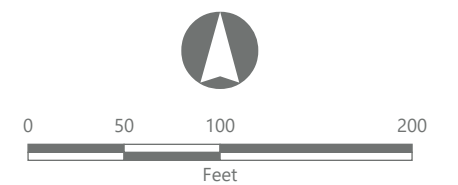
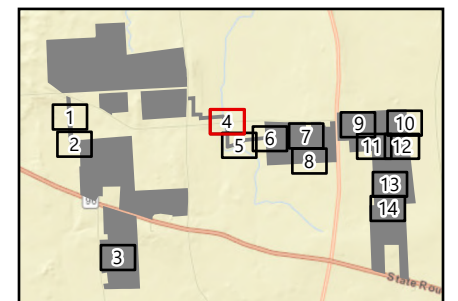


North Seneca Solar Project

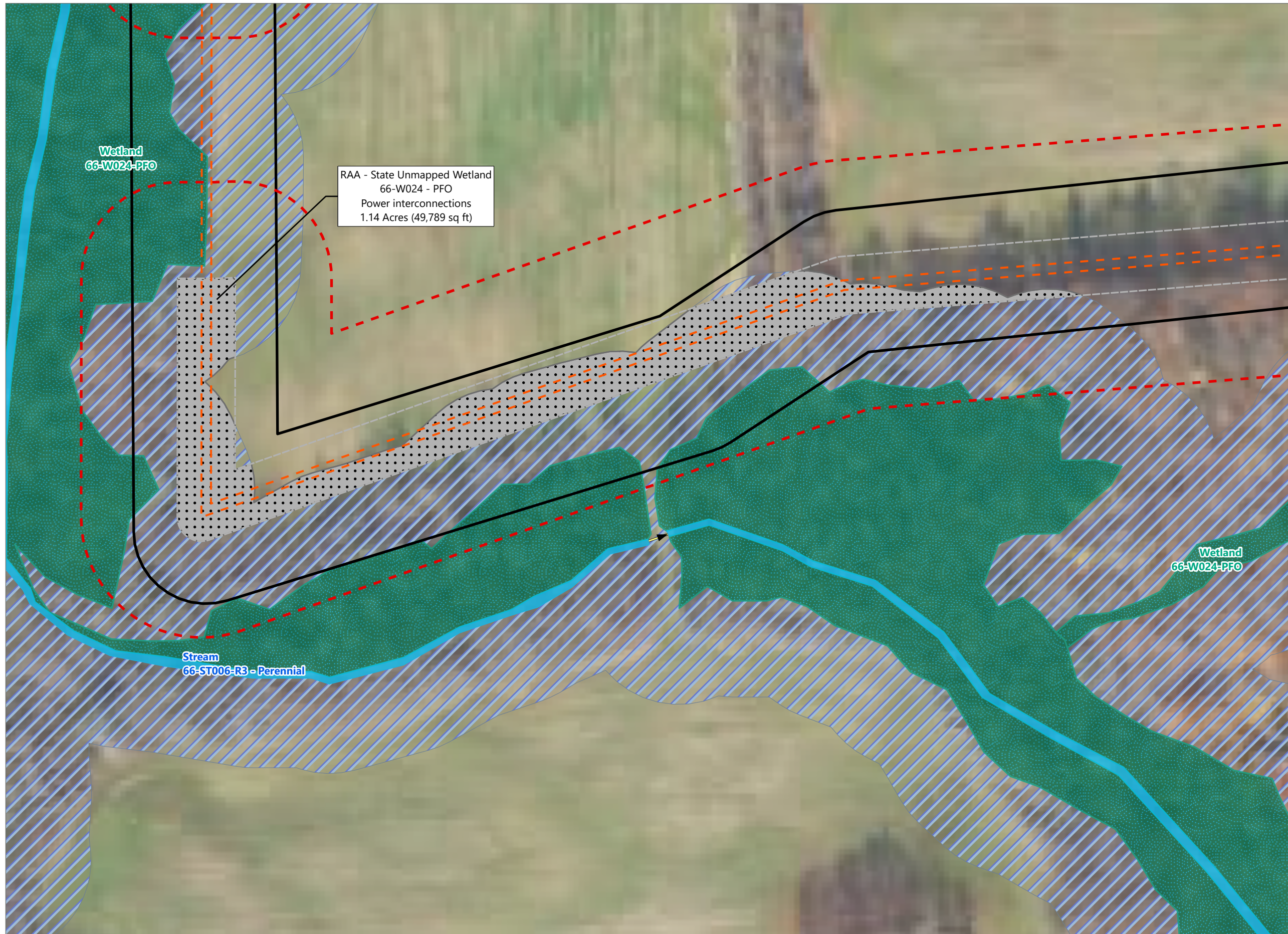
Towns of Waterloo and Junius
Seneca County, New York

Article VIII
Application Supplement
Matter No. 23-00036

- Facility Components
- - - Collection Line
 - Limit of Construction Activity
 - Facility Site
 - Wetland Study Area
- Wetlands and Streams
- Culvert
 - Wetland Continues
 - Delineated Stream w/ Potential Federal Jurisdiction
 - State Regulated Delineated Wetland per Jurisdictional Determination Letter
 - State-Regulated Adjacent Area (RAA)
- State RAA Impact
- Major



Prepared October 17, 2024
Basemap: USDA NAIP "2022 New York 60cm" orthoimagery map service

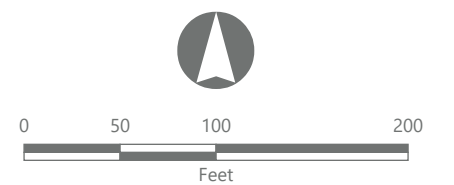
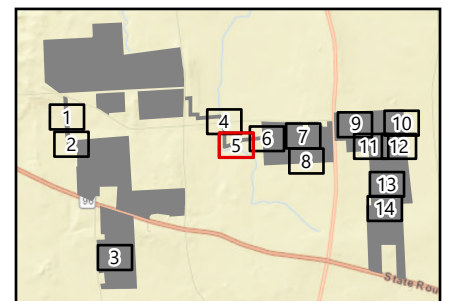


North Seneca Solar Project

Towns of Waterloo and Junius
Seneca County, New York

Article VIII
Application Supplement
Matter No. 23-00036

- Facility Components
 - Collection Line
 - Limit of Construction Activity
 - Limit of Clearing
 - Facility Site
 - Wetland Study Area
- Wetlands and Streams
 - Culvert
 - Delineated Stream w/ Potential Federal Jurisdiction
 - State Regulated Delineated Wetland per Jurisdictional Determination Letter
 - State-Regulated Adjacent Area (RAA)
- State RAA Impact
 - Major

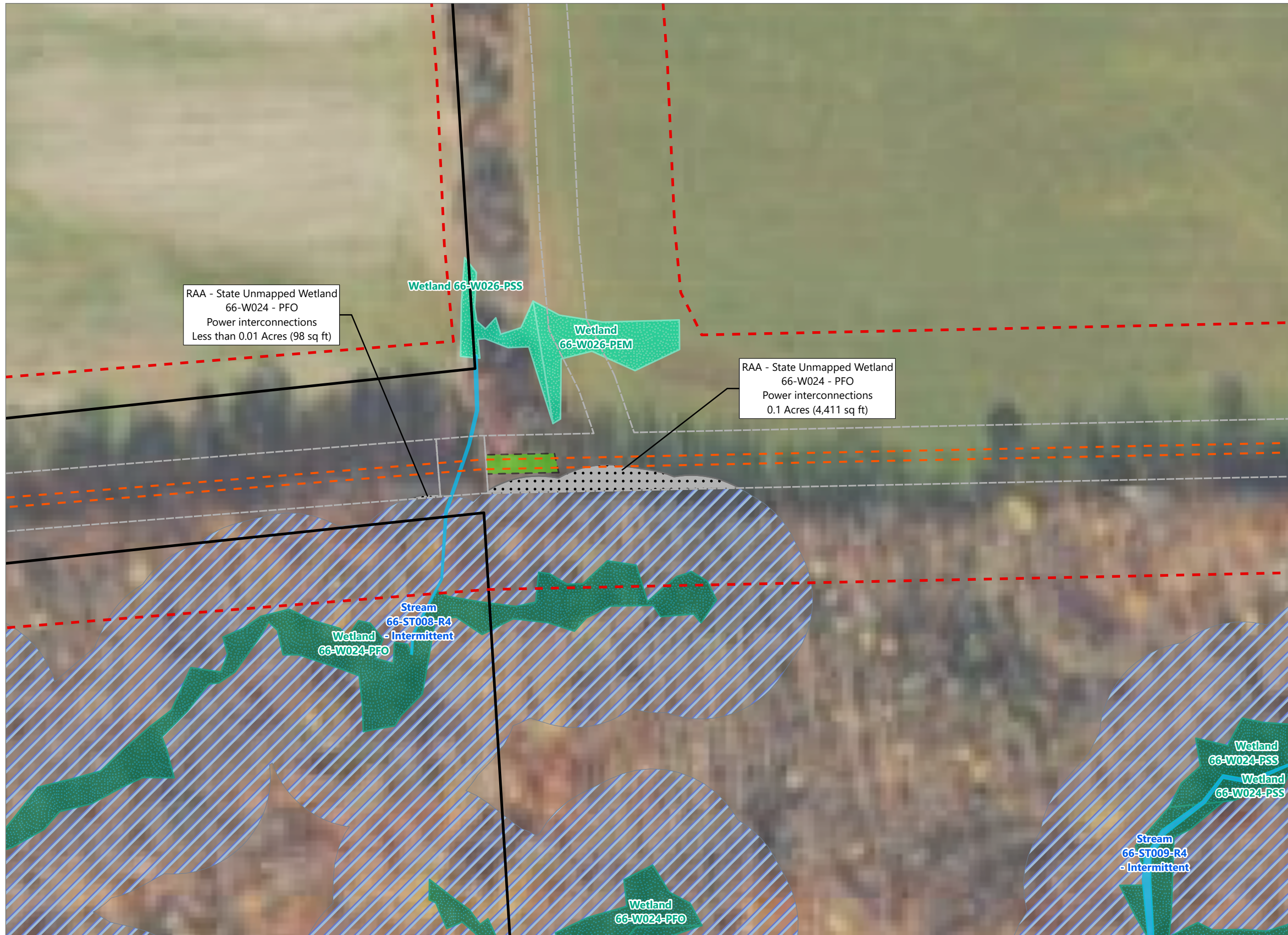


Prepared October 17, 2024
Basemap: USDA NAIP "2022 New York 60cm" orthoimagery map service

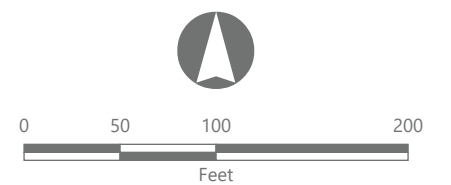
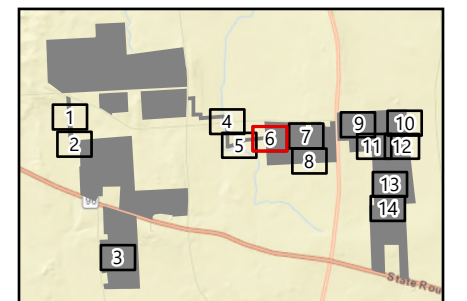
North Seneca Solar Project

Towns of Waterloo and Junius
Seneca County, New York

Article VIII
Application Supplement
Matter No. 23-00036



- Facility Components
- - - Collection Line
 - Limit of Construction Activity
 - Limit of Clearing
 - Facility Site
 - Wetland Study Area
- Wetlands and Streams
- Delineated Stream w/ Potential Federal Jurisdiction
 - Delineated Wetland w/ Potential Federal Jurisdiction
 - State Regulated Delineated Wetland per Jurisdictional Determination Letter
 - State-Regulated Adjacent Area (RAA)
- State RAA Impact
- Major



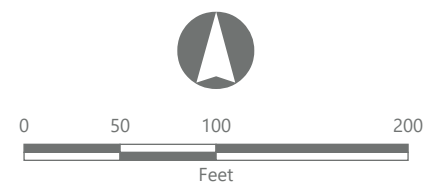
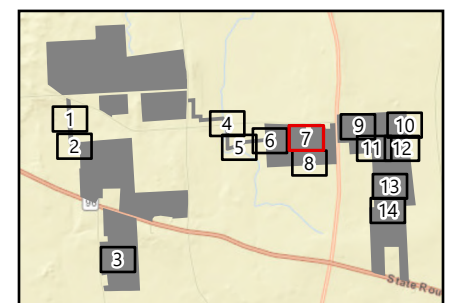
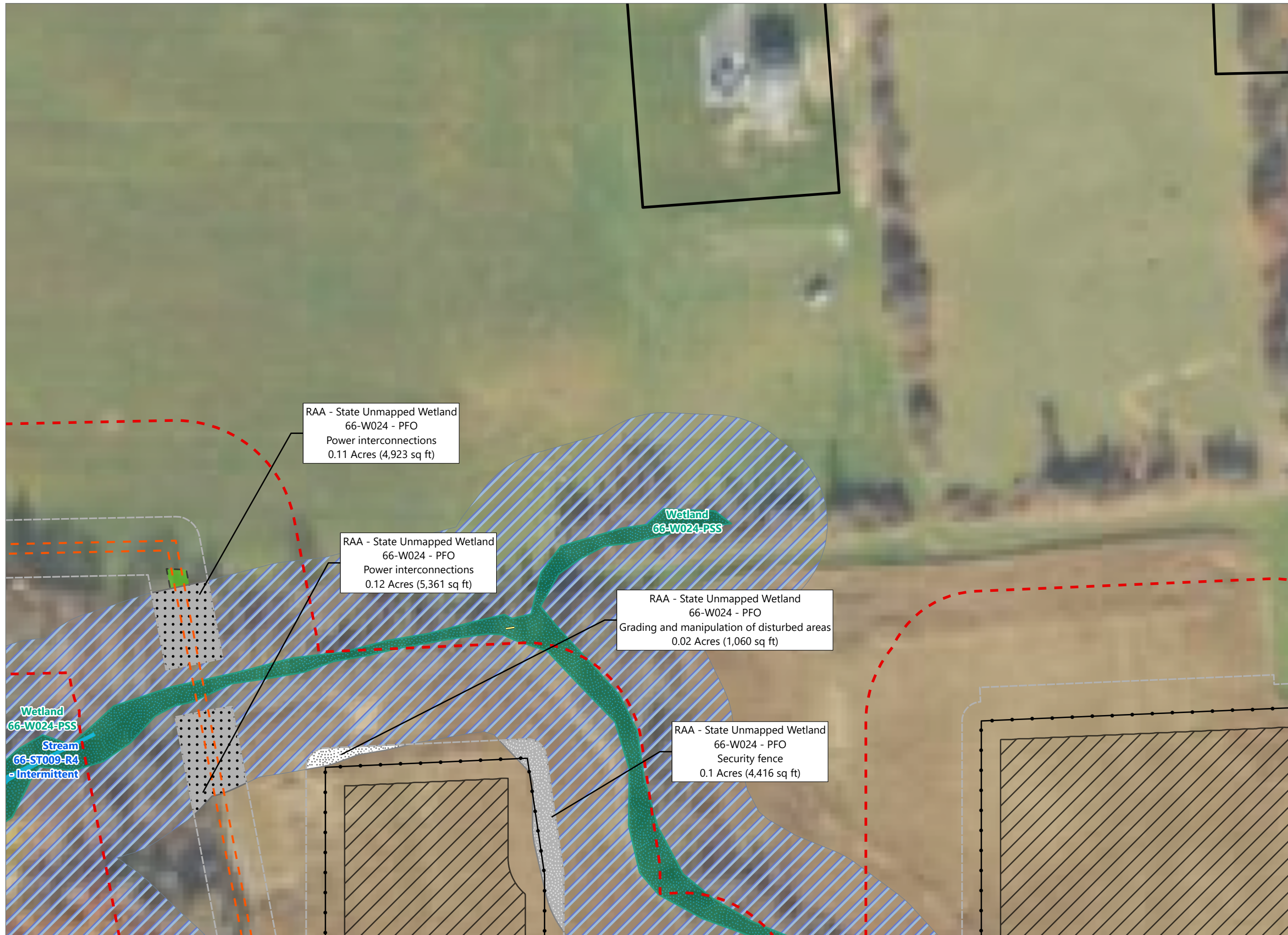
Prepared October 17, 2024
Basemap: USDA NAIP "2022 New York 60cm" orthoimagery map service

North Seneca Solar Project

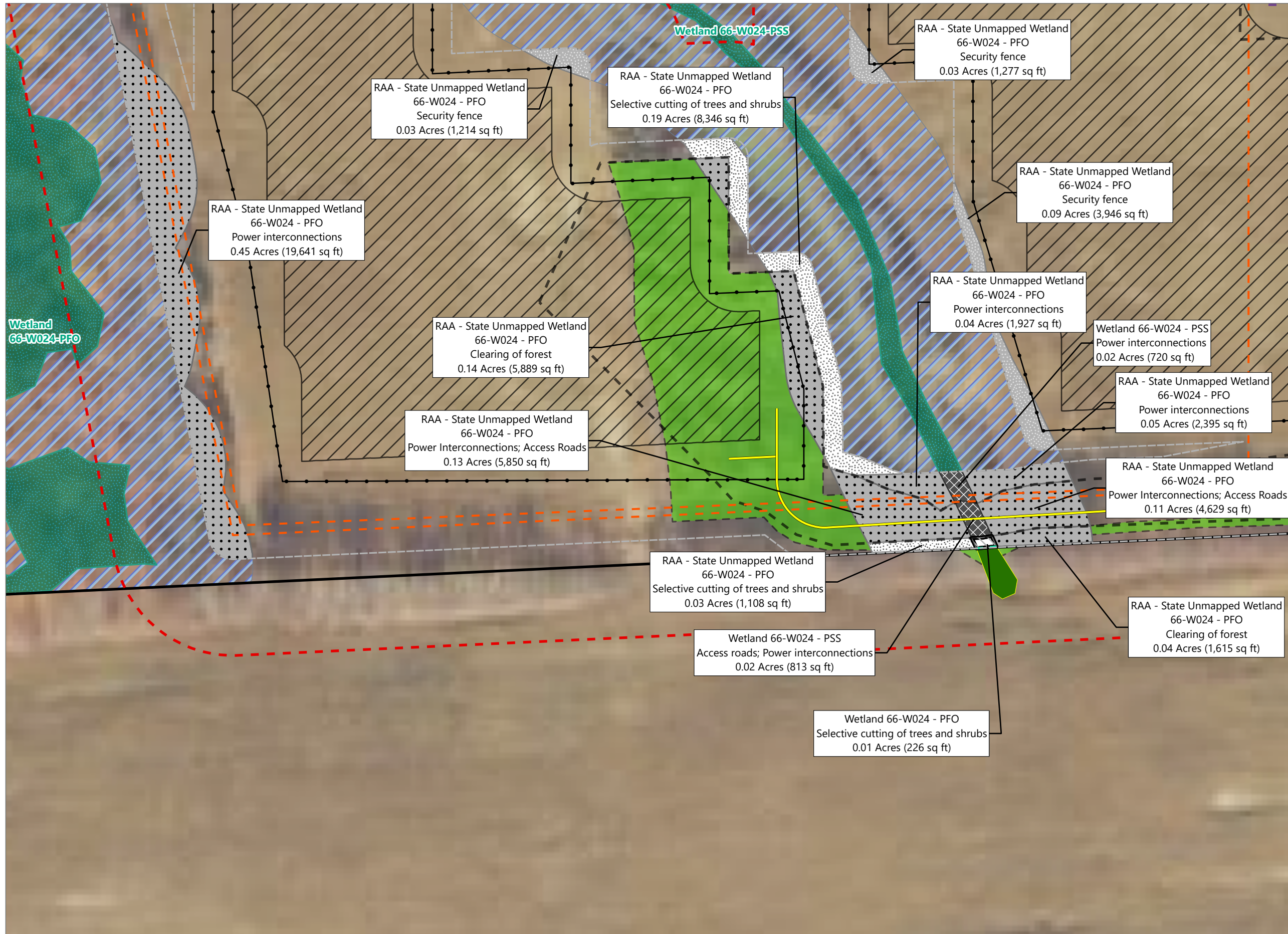
Towns of Waterloo and Junius
Seneca County, New York

Article VIII
Application Supplement
Matter No. 23-00036

- Facility Components**
- Collection Line
 - PV Array Area
 - Fence Line
 - Limit of Construction Activity
 - Limit of Clearing
 - Facility Site
 - Wetland Study Area
- Wetlands and Streams**
- Culvert
 - Delineated Stream w/ Potential Federal Jurisdiction
 - State Regulated Delineated Wetland per Jurisdictional Determination Letter
 - State-Regulated Adjacent Area (RAA)
- State RAA Impact**
- Major
 - Intermediate
 - Minor



Prepared October 17, 2024
Basemap: USDA NAIP "2022 New York 60cm" orthoimagery map service

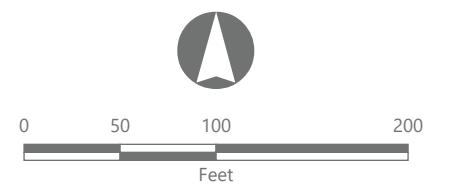
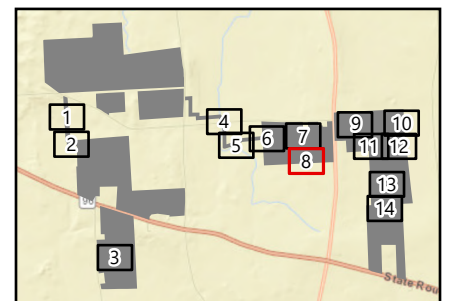


North Seneca Solar Project

Towns of Waterloo and Junius
Seneca County, New York

Article VIII
Application Supplement
Matter No. 23-00036

- Facility Components**
- Access Road
 - Collection Line
 - PV Array Area
 - Inverter
 - Fence Line
 - Limit of Grading
 - Limit of Construction Activity
 - Limit of Clearing
 - Facility Site
 - Wetland Study Area
- Wetlands and Streams**
- Wetland Continues
 - Approximate Wetland
 - State Regulated Delineated Wetland per Jurisdictional Determination Letter
 - State-Regulated Adjacent Area (RAA)
- State Wetland Impact**
- Major
 - Minor
- State RAA Impact**
- Major
 - Intermediate
 - Minor

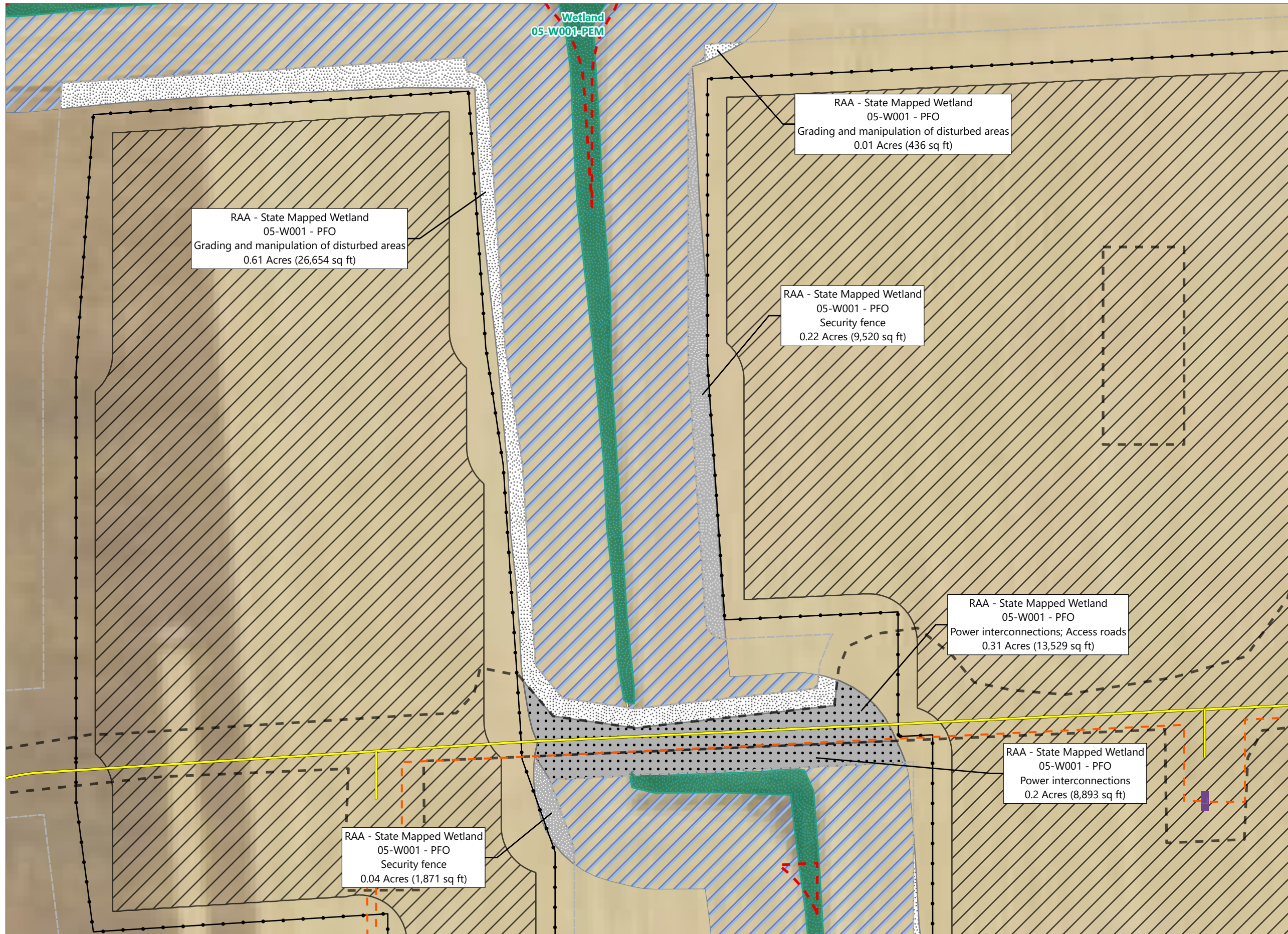


Prepared October 17, 2024
Basemap: USDA NAIP "2022 New York 60cm" orthoimagery map service

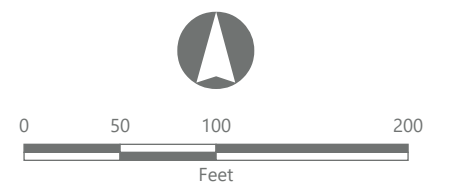
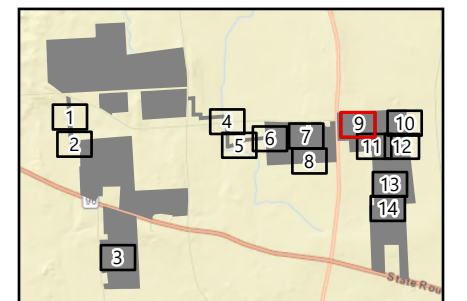
North Seneca Solar Project

Towns of Waterloo and Junius
Seneca County, New York

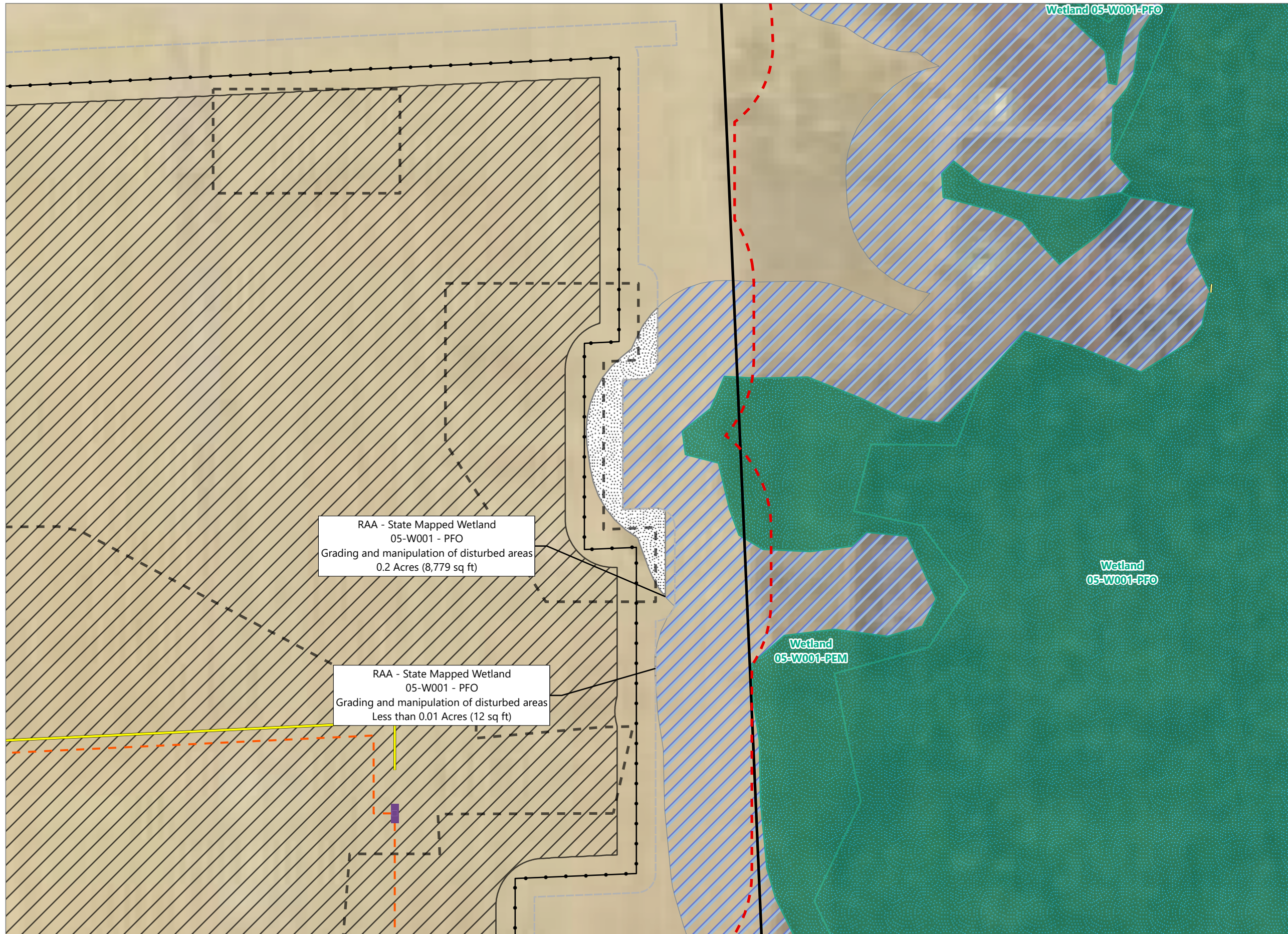
Article VIII
Application Supplement
Matter No. 23-00036



- Facility Components**
- Access Road
 - Collection Line
 - PV Array Area
 - Inverter
 - Fence Line
 - Limit of Grading
 - Limit of Construction Activity
 - Facility Site
 - Wetland Study Area
- Wetlands and Streams**
- Culvert
 - State Regulated Delineated Wetland per Jurisdictional Determination Letter
 - State-Regulated Adjacent Area (RAA)
- State RAA Impact**
- Major
 - Intermediate
 - Minor



Prepared October 17, 2024
Basemap: USDA NAIP "2022 New York 60cm" orthoimagery map service

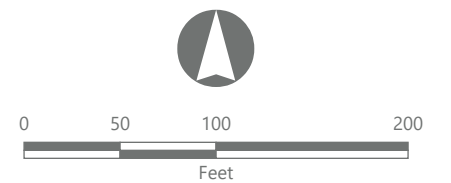
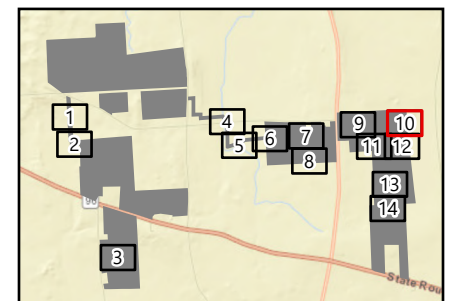


North Seneca Solar Project

Towns of Waterloo and Junius
Seneca County, New York

Article VIII
Application Supplement
Matter No. 23-00036

- Facility Components**
- Access Road
 - Collection Line
 - PV Array Area
 - Inverter
 - Fence Line
 - Limit of Grading
 - Limit of Construction Activity
 - Facility Site
 - Wetland Study Area
- Wetlands and Streams**
- Culvert
 - State Regulated Delineated Wetland per Jurisdictional Determination Letter
 - State-Regulated Adjacent Area (RAA)
- State RAA Impact**
- Minor

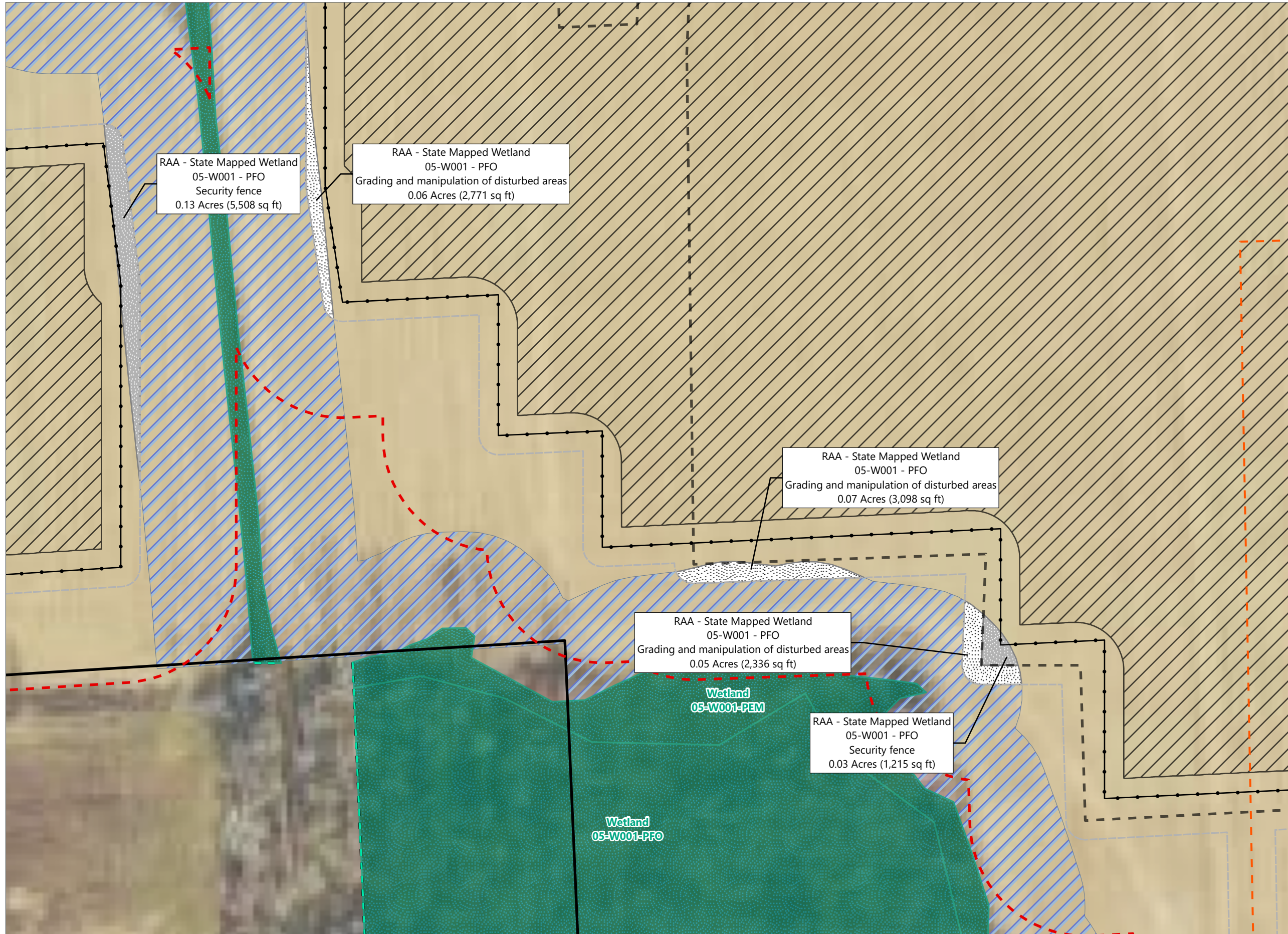


Prepared October 17, 2024
Basemap: USDA NAIP "2022 New York 60cm" orthoimagery map service

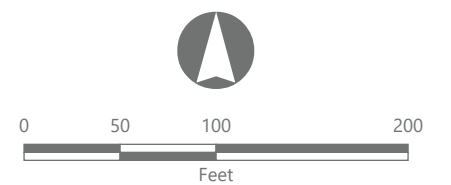
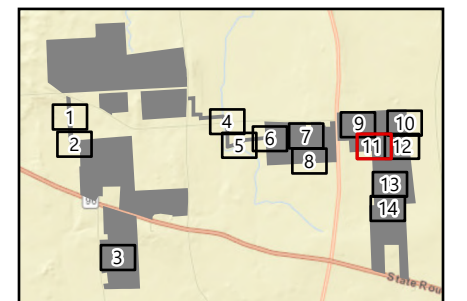
North Seneca Solar Project

Towns of Waterloo and Junius
Seneca County, New York

Article VIII
Application Supplement
Matter No. 23-00036



- Facility Components**
- Collection Line
 - PV Array Area
 - Fence Line
 - Limit of Grading
 - Limit of Construction Activity
 - Facility Site
 - Wetland Study Area
- Wetlands and Streams**
- Wetland Continues
 - State Regulated Delineated Wetland per Jurisdictional Determination Letter
 - State-Regulated Adjacent Area (RAA)
- State RAA Impact**
- Intermediate
 - Minor

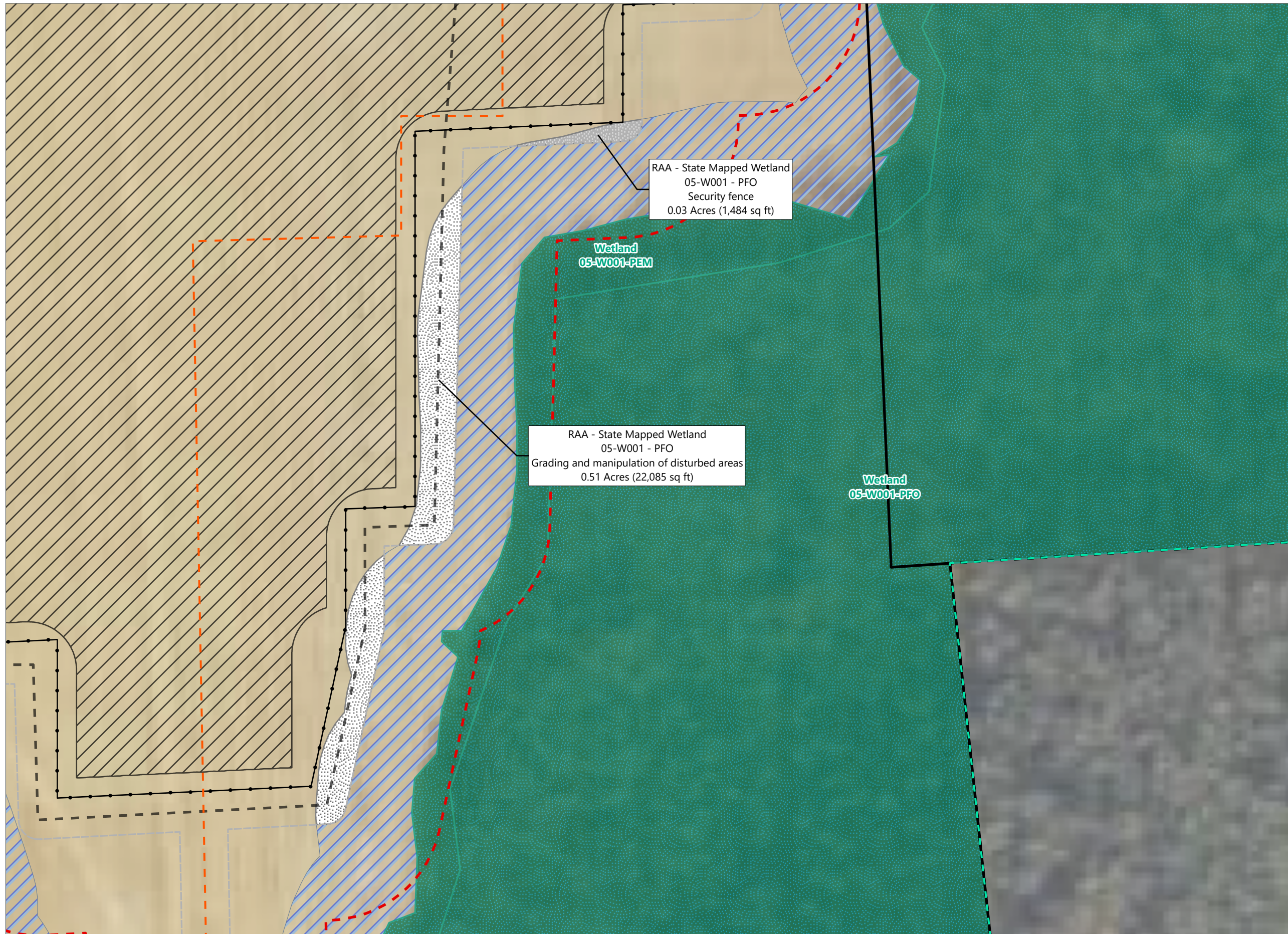


Prepared October 17, 2024
Basemap: USDA NAIP "2022 New York 60cm" orthoimagery map service

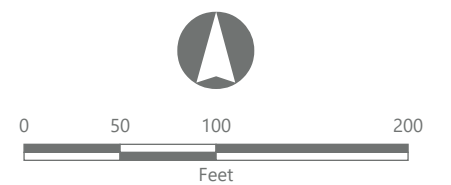
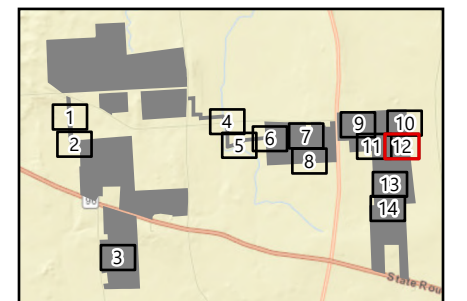
North Seneca Solar Project

Towns of Waterloo and Junius
Seneca County, New York

Article VIII
Application Supplement
Matter No. 23-00036



- Facility Components**
- Collection Line
 - PV Array Area
 - Fence Line
 - Limit of Grading
 - Limit of Construction Activity
 - Facility Site
 - Wetland Study Area
- Wetlands and Streams**
- Wetland Continues
 - State Regulated Delineated Wetland per Jurisdictional Determination Letter
 - State-Regulated Adjacent Area (RAA)
- State RAA Impact**
- Intermediate
 - Minor









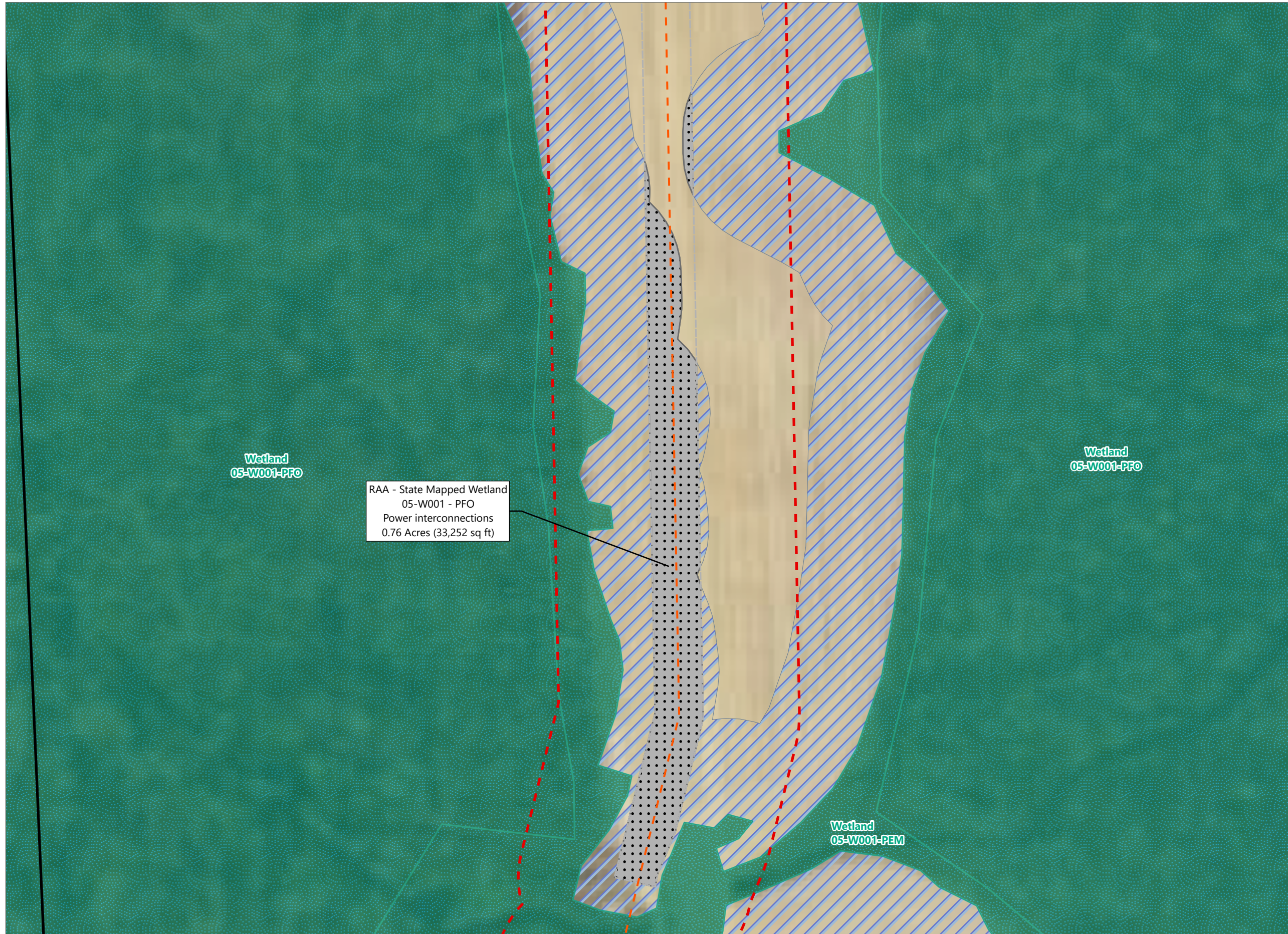
Prepared October 17, 2024
Basemap: USDA NAIP "2022 New York 60cm" orthoimagery map service

North Seneca Solar Project

Towns of Waterloo and Junius
Seneca County, New York

Article VIII
Application Supplement
Matter No. 23-00036

- Facility Components
-  Collection Line
 -  Limit of Construction Activity
 -  Facility Site
 -  Wetland Study Area
- Wetlands and Streams
-  State Regulated Delineated Wetland per Jurisdictional Determination Letter
 -  State-Regulated Adjacent Area (RAA)
- State RAA Impact
-  Major

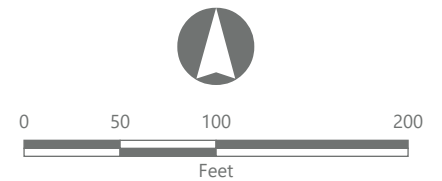
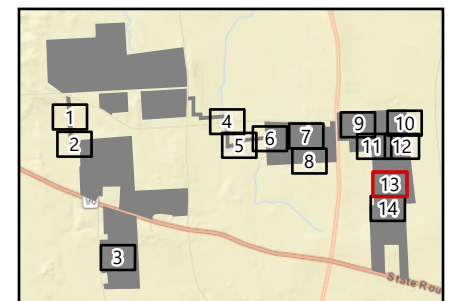


Wetland
05-W001-PFO

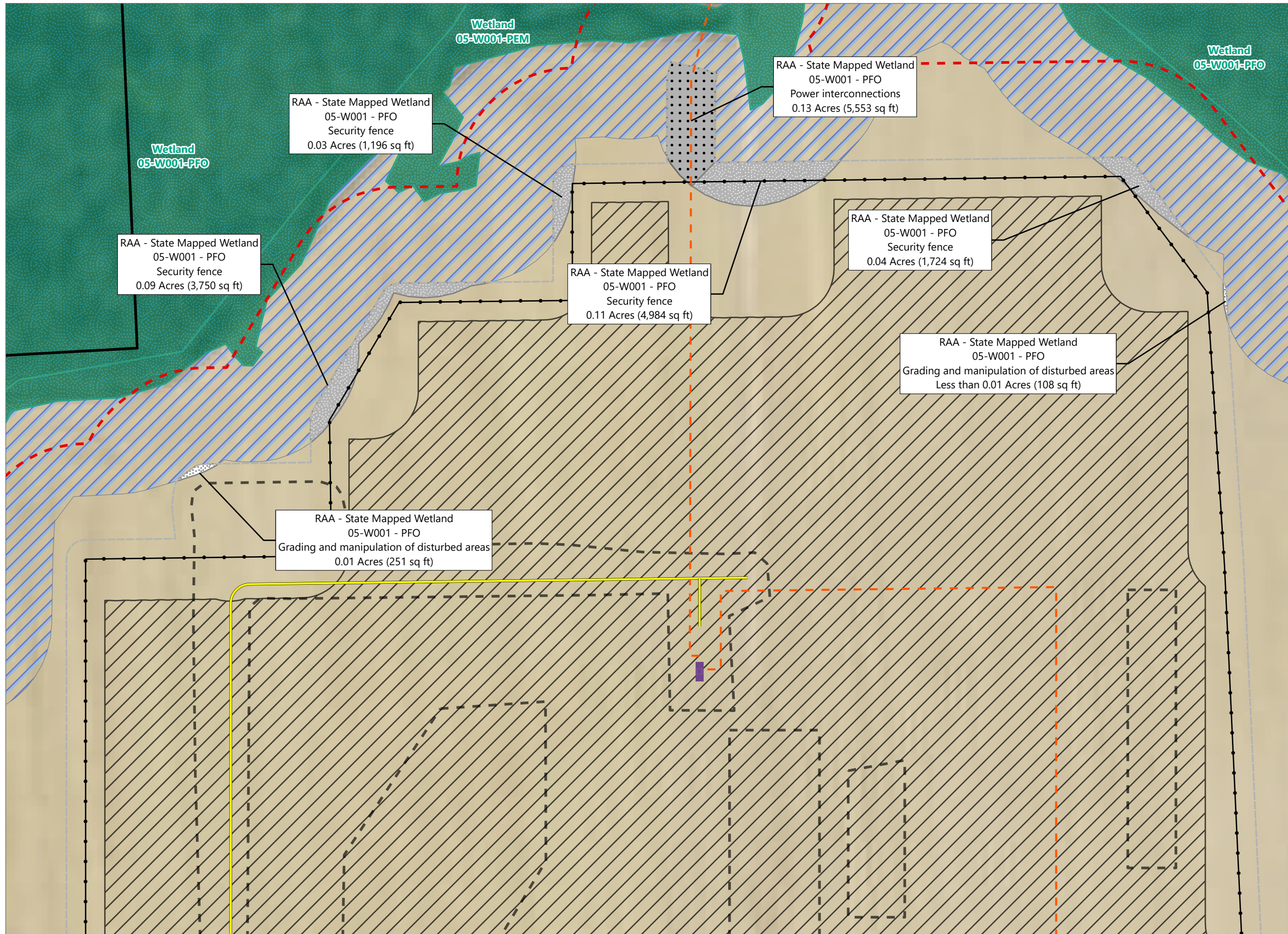
RAA - State Mapped Wetland
05-W001 - PFO
Power interconnections
0.76 Acres (33,252 sq ft)

Wetland
05-W001-PFO

Wetland
05-W001-PEM



Prepared October 17, 2024
Basemap: USDA NAIP "2022 New York 60cm" orthoimagery map service



North Seneca Solar Project

Towns of Waterloo and Junius
Seneca County, New York

Article VIII
Application Supplement
Matter No. 23-00036

- Facility Components**
- Access Road
 - Collection Line
 - PV Array Area
 - Inverter
 - Fence Line
 - Limit of Grading
 - Limit of Construction Activity
 - Facility Site
 - Wetland Study Area
- Wetlands and Streams**
- State Regulated Delineated Wetland per Jurisdictional Determination Letter
 - State-Regulated Adjacent Area (RAA)
- State RAA Impact**
- Major
 - Intermediate
 - Minor

