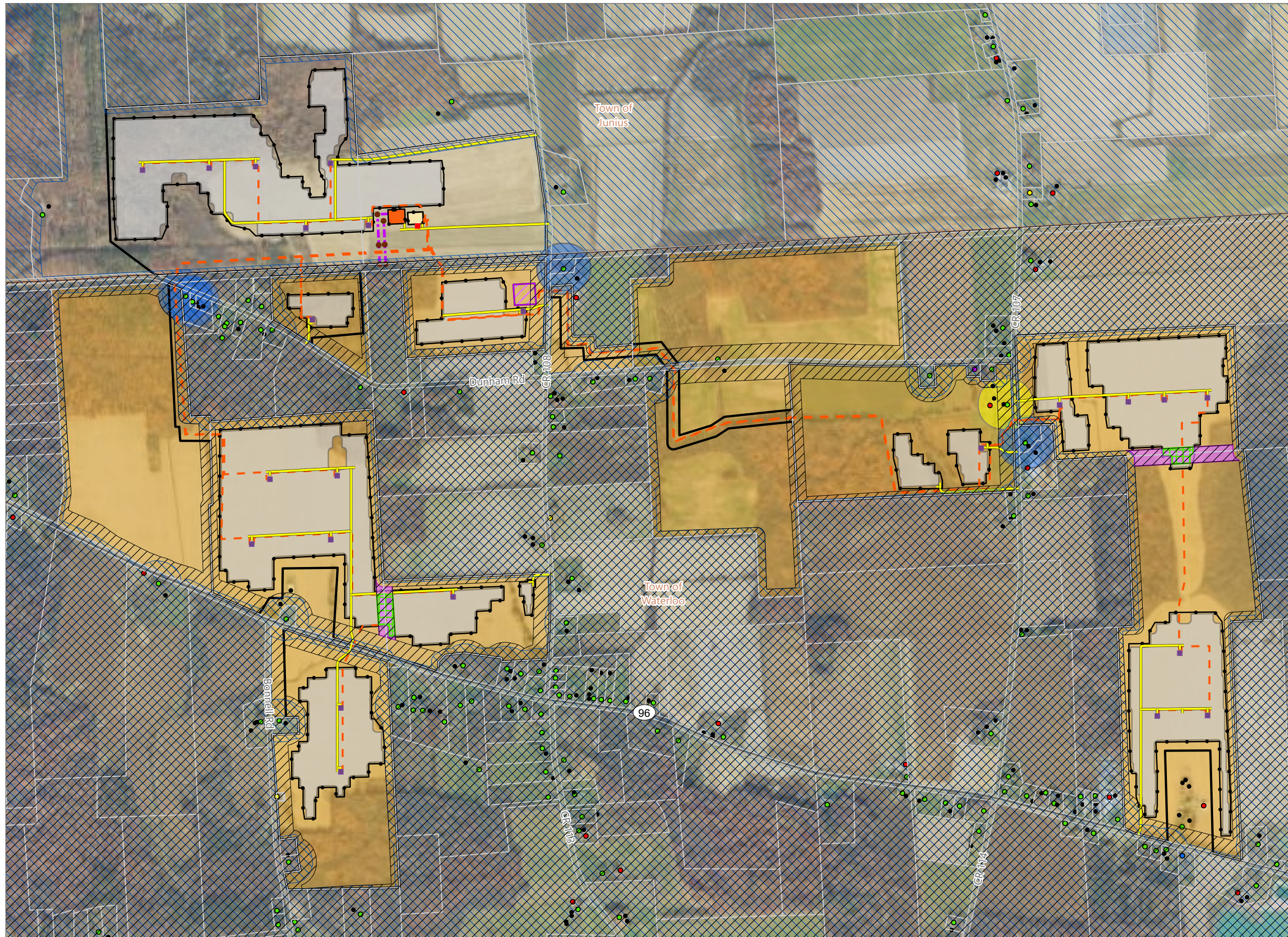


Figure 24-1. Setbacks and Zoning - Revision 1



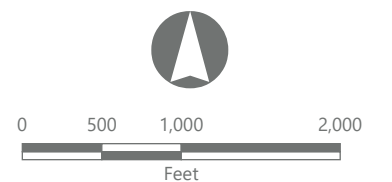
North Seneca Solar Project

Towns of Waterloo and Junius
Seneca County, New York

Article VIII
Application Supplement
Matter No. 23-00036

- Receptor
- Occupied Residence
 - Uninhabitable Structure
 - Commercial
 - Historic
 - Public
 - Other
- Setback
- ▨ ORES Setback - Applies to Major Facility Components
 - ▨ Town of Waterloo Setback
 - ▨ Potential PV Panel Area Lost
 - ▨ Potential Buildable Area Lost
 - ▨ Parcel with Collection Line Crossing Setback
 - ▨ Participating Residential Structure 300-ft offset Intersects with Collection Line
 - ▨ Non-Participating Residential Structure 300-ft offset Intersects with Collection Line
 - ▨ Parcel Boundary
- Facility Components
- Utility Pole
 - Storage Trailer
 - Access Road
 - - - Collection Line
 - - - Transmission Tap Line
 - PV Array Area
 - Inverter
 - Collection Substation
 - POI Substation
 - ▭ Fence Line
 - ▨ Laydown Area
 - ▭ Facility Site

Note: Setbacks, Potential PV Panel Area Lost and Buildable Area Lost are based off of survey accurate data, as such it may not align with underlying GIS based Parcel Boundaries and the Facility Site. The Parcel Boundary and Facility Site are based on County GIS data.



Prepared October 17, 2024
Basemap: USDA NAIP "2022 New York 60cm" orthoimagery map service