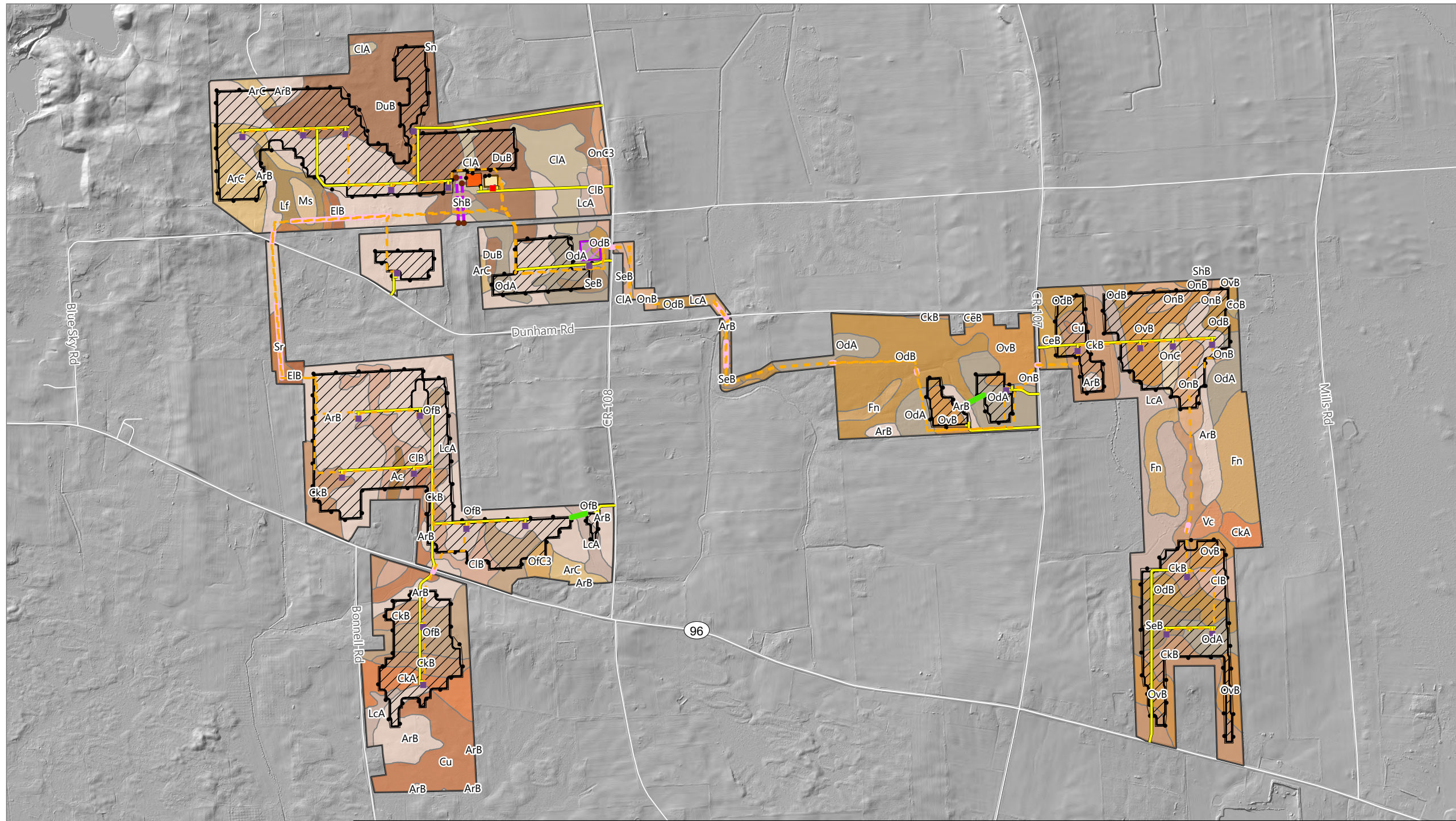


Figure 10-3. USDA Soil Types - Revision 1

# North Seneca Solar Project

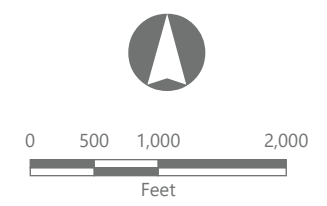
Towns of Waterloo and Junius  
Seneca County, New York

Article VIII  
Application Supplement  
Matter No. 23-00036



- Facility Components
- Utility Pole
  - Storage Trailer
  - Access Road
  - - - Collection Line
  - Transmission Tap Line
  - ▨ PV Array Area
  - Trenchless Installation
  - DC Cable Trenchless Installation
  - Inverter
  - Collection Substation
  - POI Substation
  - ▭ Fence Line
  - ▨ Laydown Area
  - ▭ Facility Site

Soil Survey Geographic Database Map Soil Units		
■ Ac - Alden mucky silt loam	■ Cu - Cosad loamy fine sand	■ OfC3 - Ontario fine sandy loam, 8 to 15 percent slopes, eroded
■ ArB - Arkport loamy fine sand, 1 to 6 percent slopes	■ DuB - Dunkirk silt loam, 1 to 6 percent slopes	■ OnB - Ontario loam, 2 to 8 percent slopes
■ Arc - Arkport loamy fine sand, 6 to 12 percent slopes	■ EIB - Elnora loamy fine sand, 2 to 6 percent slopes	■ OnC - Ontario loam, 8 to 15 percent slopes
■ CeB - Cazenovia silt loam, 3 to 8 percent slopes	■ Fn - Fonda mucky silty clay loam	■ OnC3 - Ontario loam, 8 to 15 percent slopes, eroded
■ CkA - Claverack loamy fine sand, 0 to 2 percent slopes	■ LcA - Lakemont silty clay loam, 0 to 3 percent slopes	■ OvB - Ovid silt loam, 3 to 8 percent slopes
■ CkB - Claverack loamy fine sand, 2 to 6 percent slopes	■ Lf - Lamson fine sandy loam and Mucky fine sandy loam	■ SeB - Schoharie silt loam, 2 to 6 percent slopes
■ CIA - Collamer silt loam, 0 to 2 percent slopes	■ Ms - Muck, shallow	■ ShB - Schoharie silty clay loam, 2 to 6 percent slopes
■ ClB - Collamer silt loam, 2 to 6 percent slopes	■ OdA - Odessa silt loam, 0 to 2 percent slopes	■ Sn - Sloan silt loam
■ CoB - Collamer silt loam, moderately shallow variant, 2 to 6 percent slopes	■ OdB - Odessa silt loam, 2 to 6 percent slopes	■ Sr - Stafford loamy fine sand
	■ OfB - Ontario fine sandy loam, 2 to 8 percent slopes	■ Vc - Varick silty clay loam



Prepared October 17, 2024  
Basemap: NYS ITS "Statewide Hillshade" map service