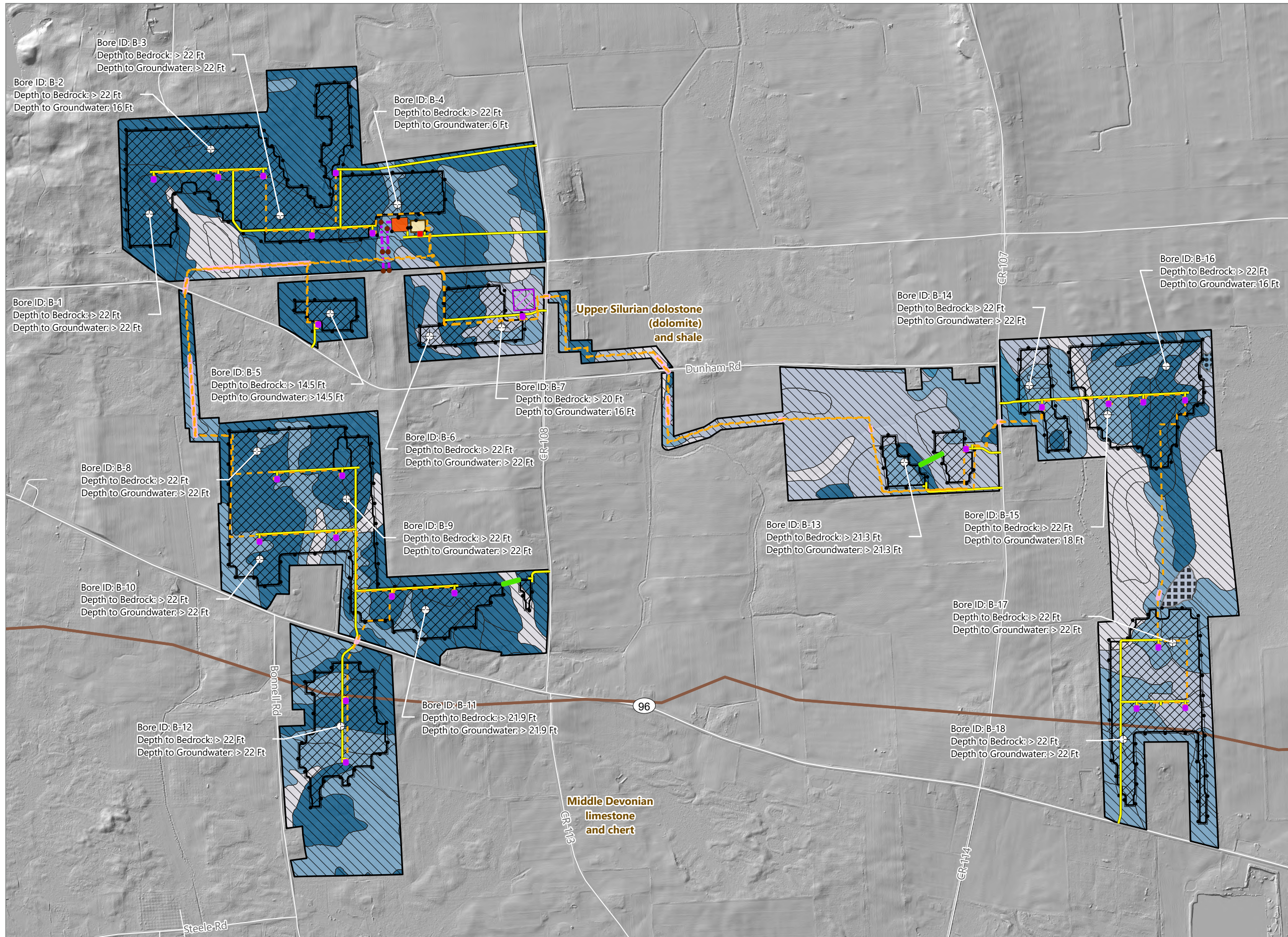


**Figure 10-4. Bedrock - Revision 1**

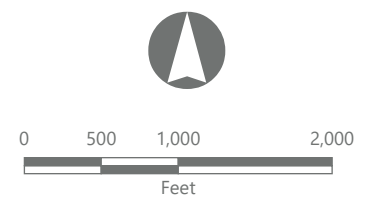


# North Seneca Solar Project

Towns of Waterloo and Junius  
Seneca County, New York

## Article VIII Application Supplement Matter No. 23-00036

- Geotechnical Boring Locations
- Bedrock Formation
- Mapped Depth to Bedrock
  - 1 - 3 Feet
  - 3 - 6 Feet
  - > 6 Feet symbol"/> > 6 Feet
- Mapped Depth to High Water Table
  - 0 (At Ground Surface)
  - < 1 Foot symbol"/> < 1 Foot
  - 1 - 3 Feet
  - 3 - 6 Feet
  - > 6 Feet symbol"/> > 6 Feet
- Facility Components
  - Utility Pole
  - Storage Trailer
  - Access Road
  - Collection Line
  - Transmission Tap Line
  - PV Array Area
  - Trenchless Installation
  - DC Cable Trenchless Installation
  - Inverter
  - Collection Substation
  - POI Substation
  - Fence Line
  - Laydown Area
  - Facility Site



Prepared October 17, 2024  
Basemap: NYS ITS "Statewide Hillshade" map service